



Children's Board
HILLSBOROUGH COUNTY

www.ChildrensBoard.org

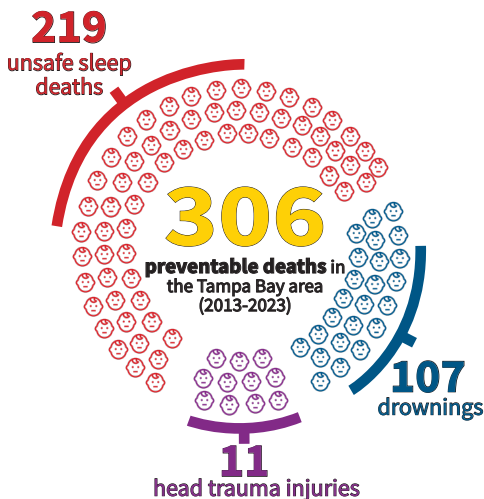
2025 Family Guide

for Services in Hillsborough County
funded by your Children's Board

1002 East Palm Avenue • Tampa, FL 33605 • (813) 229-2884

The Children's Board invests in the health and well-being of all children and families in Hillsborough County. For parents and caregivers, children are the most precious gifts, and it's our responsibility to keep them safe. The Prevent Needless Deaths awareness campaign educates caregivers about 100% preventable child deaths related to drowning, unsafe infant sleep, and head trauma.

Things that **kill kids** should come with warning signs



More infants die in adult beds than anywhere else.

Drowning kills more kids ages 1-4 than any other cause.

Shaking infants, even once, can kill or injure them for life.

Learn to prevent an accidental death:

PreventNeedlessDeaths.com





Board Members

Robin Wright DeLaVergne
Gubernatorial Appointee
Chair

The Honorable Katherine Essrig
Circuit Judge 13th Judicial Court
Vice Chair

Andrew J. Mayts Jr.
Gubernatorial Appointee
Secretary/Treasurer

Van Ayers
Superintendent Hillsborough County Public Schools

Megan Proulx Dempsey
Gubernatorial Appointee

Gwen Myers
District 3 Hillsborough County Commission

Edwin Narain
Gubernatorial Appointee

Sarah Naumowich
Gubernatorial Appointee

Beth Pasek
Community Development Administrator Suncoast Region
Department of Children and Families

Henry “Shake” Washington
School Board Member
Hillsborough County Public Schools

Rebecca Bacon
Executive Director





Table of Contents

About the Children’s Board of Hillsborough County

Mission	2
Vision.....	2
Conference Center.....	2
Our Budget.....	3

Children’s Board Family Resource Centers

Children’s Board Family Resource Centers.....	4
---	---

Achieve Plant City

Literacy is Fun Together	6
--------------------------------	---

Bay Area Legal Services

Housing Stability Program	7
Lawyers Helping Kids	8

Big Brothers Big Sisters of Tampa Bay

1-to-1 Mentoring (Elementary)	9
1-to-1 Mentoring (Middle)	10

Boys & Girls Clubs of Tampa Bay

After-Zone Elementary School Initiative	11
After-Zone Middle School Initiative	12
After-Zone Middle School Initiative at Giunta Middle	13
Brandon Art Masters (BAM!)	14

Champions for Children

Baby Bungalow.....	15
Family Focus	16
Layla’s House	17
Parents as Teachers (PAT).....	18

Children’s Home Network

Caregiver Support Services.....	19
Kinship Hillsborough.....	20
Reaching and Inspiring Students Everywhere (RAISE)	21
Supporting and Empowering Educational and Developmental Services (SEEDS)	22

Corporation to Develop Communities Of Tampa, Inc. (CDC of Tampa)

Wealth Builders Program	23
-------------------------------	----





Table of Contents

Crisis Center of Tampa Bay

Successful Families.....	24
--------------------------	----

Dawning Family Services

A Path to Prevention.....	25
Housing for Success.....	26

Early Childhood Council of Hillsborough County

Community Developmental Screening.....	27
Inclusion Support Services.....	28

Early Learning Coalition of Hillsborough County

School Readiness Funding.....	29
-------------------------------	----

Easterseals Florida, Inc.

Early Learning and Intervention Program.....	30
The Incredible Years.....	31

Family Enrichment Center, The

Autism Is Real.....	32
Kinship Care.....	33
Motivated Minds.....	34

Family Healthcare Foundation, The

Connecting Kids to Care.....	35
------------------------------	----

Florida Education Fund

CodeMasters (Countywide).....	36
CodeMasters (Strategic Initiative).....	37

Florida State University

Successful Start.....	38
-----------------------	----

Girl Scouts of West Central Florida

Girl Scout Troop Program.....	39
-------------------------------	----

Glazer Children's Museum

Children's Board Free Tuesday.....	40
Learn & Play Tampa Bay.....	41

Gulf Coast Jewish Family and Community Services

Good Afternoon Friends and Amigos.....	42
Padres De Crianza.....	43
Teen Parent Engagement Program.....	44





Table of Contents

Healthy Start Coalition of Hillsborough County

Healthy Families Hillsborough.....	45
HealthySteps Hillsborough	46
Safe Baby Plus	47

High 5, Inc.

Water Warriors	48
----------------------	----

Hillsborough Community College Fund

Quality Early Education System.....	49
-------------------------------------	----

Hillsborough Education Foundation, Inc.

Tech Connect	50
--------------------	----

Hispanic Services Council

La Red de Padres Activos/Network of Active Parents	51
--	----

Housing Authority of the City of Tampa (THA)

Building Family Financial Skills	52
Building Hope	53
Village Link Up	54
Youth Success	55

Instruments 4 Life Inc.

Music Outreach Program.....	56
-----------------------------	----

Joshua Way of Hope, Inc.

Achievers.....	57
Building a Stronger Me	58
Life Skills 360 Training Institute	59

Just Initiative

Woven Empowerment – WE Program.....	60
-------------------------------------	----

Metropolitan Ministries

C.R.E.A.T.E. School Age Program	61
First Hug.....	62
Pathways to Hope.....	63

Museum of Science and Industry, Inc.

Children’s Board Family Resource Center in Plant City	64
---	----

One More Child

One More Child Family Support.....	65
------------------------------------	----





Table of Contents

Parents and Children Advance Together (PCAT) Literacy Ministries

South County Literacy Initiative 66

Sulphur Springs Literacy Initiative 67

Positive Family Partners, Inc.

Learning Connections 68

Positive Spin

Empowering a Community with Hope (E.A.C.H. One) 69

Preserve Vision Florida

Children's Vision Health and Safety Services 70

REACHUP, Inc.

Giving Resources and Opportunities with Trust and Hope
(GROWTH) with Doulas and Dads 71

Redefiners World Languages

Global Explorers Program 72

Multilingual Citizens Program (MCP) 73

Renaissance Learning

myON Reader 74

Resource Empowerment Centre

Coaching Dreams Into Success 75

Villages CAFÉ 76

Rooted In Play Corp

Popup Adventure Playground Project 77

Seniors in Service of Tampa Bay

Foster Grandparent Program with Readers in Motion 78

Skills Center, The

Middle School Youth Opportunity 79

Spring of Tampa Bay, The

Family Safety from Domestic Violence 80

St. Joseph's Children's Hospital

Mobile Health and Safety Education 81

St. Joseph's Women's Hospital

Community Maternity Clinic 82

Supporting Motherhood and More 83





Table of Contents

Tampa Heights Junior Civic Association	
THJCA's Garden and Art Wellness Program.....	84
Tampa Kiwanis Foundation	
Kiwanis StoryWalk.....	85
Tampa Metropolitan Area YMCA	
Operation Strong Families	86
Sulphur Springs YMCA Out of School Time	87
Tampa Museum of Art	
Children's Board Free Family Day	88
United Food Bank and Services of Plant City	
F.E.E.D. Food, Educating, Empowerment for Development.....	89
University Area Community Development Corporation	
Get Moving! Mind, Body, Soul	90
Get Moving! Water Safety	91
STEPS for the University Area	92
University of South Florida Board of Trustees, The	
Helping Our Toddlers, Developing Our Children's Skills (HOTDOCS) & Developing Our Children's Skills K-5 (DOCS K-5)	93
Hillsborough HIPPY Parent Involvement Project	94
Program-Wide Positive Behavior Support (PWPBS)	95
Trauma-Informed Schools: Tiered Interventions	96



Children's Board of Hillsborough County Focus Areas

The Children's Board of Hillsborough County has been investing in children and families for 37 years. Created by referendum in 1988, the Children's Board funds programs and services at the community level to support children and families. Children's Board investments ensure:

Children are Developmentally on Track:

Early Identification of developmental needs for children birth to age five is essential for optimizing a child's learning potential and allows caregivers to learn more about their child's development.

Children are Healthy and Safe:

Early preventative health and education; preparing a family to develop nurturing and healthy habits which are enhanced by coordination with community partners including healthcare systems and primary care providers.

Children are Ready to Learn and Succeed:

School readiness and academic support for children is designed in a way that fosters academic readiness by age eight. Quality early learning promotes early caregiver involvement and professional development for early care educators. Activities may support character development, provide positive role modeling, and motivate students to learn in safe environments.

Family Support:

Support for the whole family by developing informal supports, stability and overall well-being. These relationships establish the foundation for secure attachments and future physical, cognitive and social-emotional health.



Governing Board

The Children's Board is governed by ten Board members from the local community. Five are "ex-officio", meaning they serve by virtue of the office they hold. The remaining five members of the Board are Hillsborough County citizens appointed by the Governor of Florida. The Governing Board hires the Executive Director, who is responsible for the leadership and management of the agency.

Mission

The Children's Board of Hillsborough County invests in partnerships and quality programs to support the success of all children in Hillsborough County.

Vision

Hillsborough County will be recognized as one of the top places in the nation to raise children.

Conference Center

Our administrative building on Palm Avenue also serves as a conference center available at no cost to neighborhood, community, and civic organizations. Free parking, easy access to public transportation, and a central location make it a perfect space for community events. For more information about using our conference center, call (813) 229-2884 or email reservations@childrensboard.org.

For More Information

PLEASE SCAN



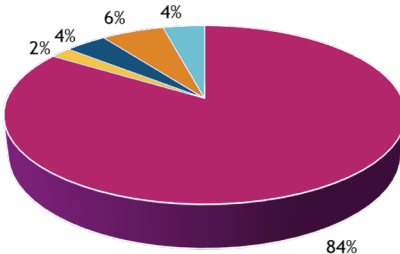
Our Budget

The Children’s Board of Hillsborough County oversees a budget of \$91.6 million. The chart below represent total revenue and expenditures for Fiscal Year 2025.

Where the Money Comes From

Revenue Sources

Ad-Valorem Taxes	73,920,760
Investment Income	5,579,649
Administrative Services Organization (ASO)	600,000
Other Community Partner Funding.....	410,000
Miscellaneous Income.....	11,000
Total Revenue	80,521,409
Fund Balance.....	11,124,199
Total Budget	91,645,608



- Total Program Expenditures
- Mandatory Government Fees
- Direct Operating Expenditures
- Administrative Operating Expenditures
- Capital



CHILDREN'S BOARD FAMILY RESOURCE CENTERS

Children's Board Family Resource Centers

Program Description

The Children's Board Family Resource Centers provide opportunities for parents or caregivers and their children to participate in parent / child developmental playgroups, developmental screenings, and health and safety education. In addition, pediatric well-child visits, immunizations and hearing or vision screening are provided for qualifying families. The centers have relationships with community partners and volunteers to focus on supporting families with children from birth to eighteen years old. The centers are designed to support families and communities become happier, healthier, and stronger.

Locations:

Brandon

1271 Kingsway Road
Brandon, FL – 33510
(813) 740-4634

Plant City

301 North Palmer Street
Plant City, FL – 33563
(813) 752-8700

Central Tampa

1002 East Palm Avenue
Tampa, FL – 33605
(813) 204-1741

North Tampa

116 West Fletcher Avenue
Tampa, FL – 33612
(813) 558-1877

Doretha Wynn Edgecomb Children's Board Family Resource Center in Temple Terrace

5892 East Fowler Avenue
Temple Terrace, FL – 33617
(813) 435-3032

South County

3030 East College Avenue
Ruskin, FL – 33570
(813) 641-5600

Town 'N Country

7520 West Waters Avenue, Suite #8
Tampa, FL – 33615
(813) 356-1703



CHILDREN'S BOARD FAMILY RESOURCE CENTERS

(continued from previous page)

Target Population Served: Families with children from birth to 18

Service Area/Geographic Focus: Hillsborough County

Bilingual Services: Yes – Spanish

Funding Amount: \$3,296,557

Contact Information:

Address: Lutheran Services Florida
3627 West Waters Avenue
Tampa, FL 33614

Phone: (813) 704-1741

Website: www.familysupporthc.org

Social Media: Facebook – Children's Board Family Resource Centers
Instagram – @cbfamilyresourcecenters

Subcontracts: None



Literacy Is Fun Together**Program Description**

The Literacy Is Fun Together (LIFT) program supports family literacy. Parents are engaged in educational activities with their children. The program offers early childhood education classes, developmental screenings, literacy skill assessments, and tutoring.

Target Population Served: Children eighteen months through 5th grade and their parents/caregivers

Service Area/Geographic Focus: East Hillsborough County

Bilingual Services: Yes – Spanish

Funding Amount: \$492,130

Contact Information:

Address: 202 West Reynolds Street
Plant City, FL 33563

Phone: (813) 752-4010

Website: www.achieveplantcity.org

Social Media: Facebook – Achieve Plant City
Instagram – @achieve_plant_city

Subcontracts: None



Housing Stability Program

Program Description

Bay Area Legal Service's Housing Stability program provides renters in Hillsborough County with free legal advice and services, including legal representation in legal disputes with their landlord or Tampa Housing Authority when applicable, to prevent eviction or other housing instability. When appropriate, renters are also evaluated for any third-party rental assistance programs they may qualify for, and are provided referrals and support in applying to applicable rental assistance programs. Renters are also provided with free holistic social work services and ongoing case management support to address any further barriers to housing stability.

Target Population Served: Hillsborough County renters with children ages from birth to twelve in a household

Service Area/Geographic Focus: Hillsborough County

Bilingual Services: Yes, access to free, confidential translation and interpreting services for any language

Funding Amount: \$81,279

Contact Information:

Address: 1302 North 19th Street
Suite 400
Tampa, FL 33605

Phone: (813) 232-1343 ext. 100 or (800) 625-2257
to apply for services

Website: www.bals.org

Social Media: Facebook – Bay Area Legal Services
X – @bay_area_legal
Instagram – @bayarealegalservices

Subcontracts: None



Lawyers Helping Kids**Program Description**

Lawyers Helping Kids supports children and families with services related to housing, public benefits, employment, domestic violence, paternity, custody, child support, guardianship, and adoption. In addition, eligible families can be referred to Wheels of Success to meet their transportation needs.

Target Population Served: Pregnant women and families with children birth through 5th grade

Service Area/Geographic Focus: Hillsborough County

Bilingual Services: Yes – Spanish

Funding Amount: \$782,079

Contact Information:

Address: 1302 North 19th Street
Suite 400
Tampa, FL 33605

Phone: (813) 232-1343

Website: www.bals.org

Social Media: Facebook – Bay Area Legal Services
X – @bay_area_legal
Instagram – @bayarealegalservices

Subcontracts: None



1-to-1 Mentoring (Elementary)

Program Description

The 1-to-1 Comprehensive Mentoring Program provides professionally supported mentoring services to children and youth who can benefit from a caring and supportive relationship. The program supports children and families by connecting a “Little” (youth) with a “Big” (mentor) to achieve a safe, long, and strong match. Volunteers, parents, mentors, and the youth themselves must commit to actively participate for a minimum of fifteen months or longer to maximize the outcome.

Target Population Served: Elementary School age students

Service Area/Geographic Focus: Hillsborough County

Bilingual Services: Yes – Spanish

Funding Amount: \$297,500

Contact Information:

Address: 5555 West Waters Avenue
Suite 607
Tampa, FL 33634

Phone: (813) 769-3600

Website: www.bbbstampabay.org

Social Media: Facebook – Big Brothers Big Sisters of Tampa Bay
X – @bbbs_tampabay
Instagram – @bbbs_tampabay

Subcontracts: None



1-to-1 Mentoring (Middle)

Program Description

The 1-to-1 Comprehensive Mentoring Program provides professionally supported mentoring services to children and youth who can benefit from a caring and supportive relationship. The program supports children and families by connecting a “Little” (youth) with a “Big” (mentor) to achieve a safe, long, and strong match. Volunteers, parents, mentors, and the youth themselves must commit to actively participate for a minimum of fifteen months or longer to maximize the outcome.

Target Population Served: Middle School age students

Service Area/Geographic Focus: Hillsborough County

Bilingual Services: Yes – Spanish

Funding Amount: \$297,500

Contact Information:

Address: 5555 West Waters Avenue
Suite 607
Tampa, FL 33634

Phone: (813) 769-3600

Website: www.bbbstampabay.org

Social Media: Facebook – Big Brothers Big Sisters of Tampa Bay
X – @bbbs_tampabay
Instagram: @bbbs_tampabay

Subcontracts: None



After-Zone Elementary School Initiative**Program Description**

The After-Zone Elementary School program provides after school support to students every day school is in session. This includes homework assistance, character development programs, health and wellness activities and academic support. The program runs when school dismisses until 6pm. Summer programs will be offered if the school is open and will run Monday through Friday. Included in summer programs are educational and fun field trips, lunch and snack, sports and character programs and continued academic support.

Target Population Served: Children in kindergarten through 5th grade

Service Area/Geographic Focus: DeSoto, Morgan Woods and Mort Elementary Schools

Bilingual Services: Yes – Spanish

Funding Amount: \$812,211

Contact Information:

Address: 1307 North MacDill Avenue
Tampa, FL 33607

Phone: (813) 769-7533

Website: www.bgctampa.org

Social Media: Facebook – Boys and Girls Clubs of Tampa Bay
X – @bgctampa
Instagram – @bgctampa

Subcontracts: None



After-Zone Middle School Initiative

Program Description

The After-Zone Middle School Initiative provides out of school time and summer programming for youth. The program supports children and families through service projects, STEM learning, cultural art activities, leadership development, fitness, and the exploration of career fields or colleges aligned with the youths interests. Power Hour: Making Minutes Count will be offered before school begins and will be dedicated to homework assistance and tutoring.

Target Population Served: Students in 6th, 7th, or 8th grade at Pierce, Marshall, Shields, or Tomlin Middle School

Service Area/Geographic Focus: Town 'N Country, Plant City, Ruskin, and Wimauma

Bilingual Services: Yes – Spanish

Funding Amount: \$588,000

Contact Information:

Address: 1307 North MacDill Avenue
Tampa, FL 33607

Phone: (813) 769-7533

Website: www.bgctampa.org

Social Media: Facebook – Boys and Girls Clubs of Tampa Bay
X – @bgctampa
Instagram – @bgctampa

Subcontracts: None



After-Zone Middle School Initiative at Giunta Middle**Program Description**

The After-Zone Middle School Initiative provides out of school time and summer programming for youth. The program supports children and families through service projects, STEM learning, cultural art activities, leadership development, fitness, and the exploration of career fields or colleges aligned with the youth's interests. Power Hour: Making Minutes Count will be offered before school begins and will be dedicated to homework assistance and tutoring.

Target Population Served: Students in 6th to 8th grade

Service Area/Geographic Focus: Giunta Middle School

Bilingual Services: Yes – Spanish

Funding Amount: \$238,993

Contact Information:

Address: 1307 North MacDill Avenue
Tampa, FL 33607

Phone: (813) 875-5771

Website: www.bgctampa.org

Social Media: Facebook – Boys and Girls Clubs of Tampa Bay
X – @bgctampa
Instagram – @bgctampa

Subcontracts: None



Brandon Art Masters! (BAM!)**Program Description**

Brandon Art Masters provides elementary school students a high-quality art instruction and exposure after-school program. Working with professional artists and materials, students explore a variety of art mediums and showcase their work to the public two times per year. This program includes art-focused field trips.

Target Population Served: Children in kindergarten through 5th grade

Service Area/Geographic Focus: Carey Brandon Club

Bilingual Services: No

Funding Amount: \$95,566

Contact Information:

Address: 510 East Sadie Street
Brandon, FL 33510

Phone: (813) 444-0375

Website: www.bgctampa.org

Social Media: Facebook – Boys and Girls Clubs of Tampa Bay
X – @bgctampa
Instagram – @bgctampa

Subcontracts: None



Baby Bungalow**Program Description**

Baby Bungalow is an early childhood resource center for parents and caregivers. New and experienced parents alike can benefit from the wide variety of adult-child playgroups, workshops, developmental screenings and other activities.

Target Population Served: All services are for “any baby, any family”

Service Area/Geographic Focus: Hillsborough County

Bilingual Services: Yes – Spanish

Funding Amount: \$301,134

Contact Information:

Address: 3108 West Azelee Street
Tampa, FL 33609

Phone: (813) 673-4646

Website: www.cfctb.org/program/baby-bungalow

Social Media: Facebook – [cfcbabybungalow](#)
X – [@cfctampabay](#)
Instagram – [@cfc_tampabaybabycafe](#)

Subcontracts: None

Family Focus

Program Description

The Family Focus program provides prenatal and postpartum education and support to adults with substance abuse and behavioral health concerns who are pregnant or are parenting children birth through middle school. The program will support children and families by offering intensive case management services, developmental screenings, parenting education and support to promote the birth of healthy newborns. The program is designed to support the positive relationships of moms, dads, and child to promote the birth of substance free babies.

Target Population Served: Pregnant and parenting mothers and fathers

Service Area/Geographic Focus: Participants in treatment at Cove Behavioral Health in Hillsborough County

Bilingual Services: Yes – Spanish

Funding Amount: \$517,315

Contact Information:

Address: 4422 East Columbus Drive
Tampa, FL 33605

Phone: (813) 673-4646 ext. 7000

Website: www.cfctb.org

Social Media: Facebook – Champions for Children
X – @cfctampabay
Instagram – @cfctampabay

Subcontracts: Cove Behavioral Health, Inc.

Layla's House**Program Description**

Layla's House is in the heart of Sulphur Springs and is a community-based learning and resource center that provides playgroups, workshops, developmental checkups, community activities and support for parents and caregivers with children birth to age five as well as expectant moms and dads.

Target Population Served: All services are for “any baby, any family” in Hillsborough County

Service Area/Geographic Focus: Hillsborough County

Bilingual Services: Yes – Spanish

Funding Amount: \$506,725

Contact Information:

Address: 1506 East Eskimo Avenue
Tampa, FL 33604

Phone: (813) 443-5004

Website: www.cfctb.org

Social Media: Facebook – Layla's House
X – @cfctampabay
Instagram – @cfctampabay

Subcontracts: None



Parents as Teachers (PAT)

Program Description

The Parents as Teachers (PAT) program provides families with a personal parent educator who visits the home and support groups meet monthly. PAT provides learning activities for the child, models age appropriate activities, introduces the use of books into play, and hosts other fun activities to prepare the child for school. The program offers screenings in overall development.

Target Population Served: Parents and caregivers of young children birth through kindergarten

Service Area/Geographic Focus: Hillsborough County

Bilingual Services: Yes – Spanish and Creole

Funding Amount: \$2,051,979

Contact Information:

Address: 3108 West Azelee Street
Tampa, FL 33609

Phone: (813) 673-4646

Website: www.cfctb.org

Social Media: Facebook – Champions for Children
Facebook – Parents As Teachers Tampa
X – @cfctampabay
Instagram – @cfctampabay

Subcontracts: None

Caregiver Support Services

Program Description

Caregiver Support Services (CSS) offers comprehensive respite support to caregivers and their families. The program serves children between the ages of birth through 13 who have physical disabilities, social-emotional challenges, or developmental delays/disabilities and caregivers who are experiencing acute situational stressors leading to a strained family system. The philosophy of the CSS program through its wraparound, home visiting approach is to consider the whole family unit, not simply the identified child or caregiver, knowing the family unit is a highly integrated complex system that must be addressed holistically. Through “respite” or short-term childcare services, caregivers are provided a much-needed break so they can focus on their own health needs. Caregivers are also connected to additional resources and services in their community ensuring they have all the supports they need to care for their family and build resilience so the family can thrive and function at its very best.

Target Population Served: Any parent or caregiver caring full-time for a child, birth through 13 years of age

Service Area/Geographic Focus: Hillsborough County

Bilingual Services: Yes – English and Spanish

Funding Amount: \$1,178,068

Contact Information:

Address: 510 Vondenburg Drive
Suite 208
Brandon, FL 33511

Phone: (813) 897-3652

Website: www.childrenshomenetwork.org

Social Media: Facebook – Childrens Home Network
X – @childrenhomenet
Instagram – @childrenhomenet

Subcontracts: None



Kinship Hillsborough**Program Description**

The Kinship Hillsborough program supports children residing with a relative caregiver or another caring adult by providing case management, support groups, and developmental screenings. The program provides in-home wellness services to caregivers with health-related concerns. In addition, Bay Area Legal Services provides education on custody matters, and supports family stability to ensure the safety, social-emotional and academic needs of the children are met.

Target Population Served: Relative and non-relative caregivers with children birth through enrolled in middle school

Service Area/Geographic Focus: Hillsborough County

Bilingual Services: Yes – Spanish

Funding Amount: \$659,525

Contact Information:

Address: 3450 Buschwood Park Drive
Suite 195
Tampa, FL 33618

Phone: (888) 920-8761 or (813) 901-3409

Website: www.childrenshomenetwork.org

Social Media: Facebook – Childrens Home Network
X – @childrenhomenet
Instagram – @childrenhomenet

Subcontracts: None

Reaching and Inspiring Students Everywhere (RAISE)**Program Description**

Reaching and Inspiring Students Everywhere (RAISE) provides children from birth through 3rd grade and their families with access to services that promote positive behavioral, developmental, and educational success. The program works with children who are at risk of having experienced trauma, presenting challenging behaviors, developmental delay or a diagnosed disability affecting a child's readiness for school, or academic performance.

Target Population Served: Children birth to 3rd grade and their families

Service Area/Geographic Focus: Hillsborough County

Bilingual Services: Yes – Spanish

Funding Amount: \$1,379,010

Contact Information:

Address: 3450 Buschwood Park Drive
Suite 195
Tampa, FL 33618

Phone: (813) 605-2354

Website: www.childrenshomenetwork.org

Social Media: Facebook – Childrens Home Network
X – @childrenhomenet
Instagram – @childrenhomenet

Subcontracts: None

***Supporting and Empowering Educational and
Developmental Services (SEEDS)***

Program Description

SEEDS provides case management services and referrals with an emphasis on engaging families in their child's educational, social and developmental experiences. The program works with teachers to coordinate services and support success in school. It offers a family assessment, literacy support services for students and shares community resources with all families.

Target Population Served: Children birth to 5th grade and their families

Service Area/Geographic Focus: Hillsborough County

Bilingual Services: Yes – Spanish and Creole

Funding Amount: \$2,825,299

Contact Information:

Address: 3450 Buschwood Park Drive
Suite 195
Tampa, FL 33618

Phone: (813) 901-3409

Website: www.childrenshomenetwork.org

Social Media: Facebook – Childrens Home Network
X – @childrenhomenet
Instagram – @childrenhomenet

Subcontracts: None





**CORPORATION TO DEVELOP
COMMUNITIES OF TAMPA, INC.
CDC OF TAMPA**

Wealth Builders Program

Program Description

The CDC of Tampa's Wealth Builders Program aims to empower community members and enrich their future by guiding them toward financial stability. We achieve this by offering support services that facilitate the successful completion of educational and training programs, help secure higher-paying employment, and impart essential financial principles. These strategies are crucial for ensuring the financial security of our residents.

Target Population Served: Expectant parents/caregivers and parents/caregivers with children from birth to fourteen years of age

Service Area/Geographic Focus: Zip codes 33603 or 33610

Bilingual Services: Yes – Spanish

Funding Amount: \$400,000

Contact Information:

Address: Chloe Coney Urban Enterprise Center (CDC of Tampa)
1907 East Hillsborough Avenue
Suite 100
Tampa, FL 33610

Phone: (813) 231-4362

Website: www.cdcoftampa.org

Social Media: Facebook – CDC of Tampa
X – @cdcoftampa
Instagram – @cdcoftampa

Subcontracts: None



Successful Families

Program Description

The Successful Families program provides bilingual, culturally competent, community-based services for children and families in East and South County communities. We coordinate access to needed services including counseling and parenting support services including counseling and parenting support services through the Nurturing Parenting Programs.

Target Population Served: Families with children birth to 8th grade

Service Area/Geographic Focus: East (Plant City/Dover) and South (Wimauma/Ruskin) Hillsborough County

Bilingual Services: Yes – Spanish

Funding Amount: \$723,342

Contact Information:

Address: One Crisis Center Plaza
Tampa, FL 33613

Phone: (813) 490-5490

Website: www.CrisisCenter.com

Social Media: Facebook – Crisis Center of Tampa Bay
Instagram – @Crisis Center of Tampa Bay

Subcontracts: None

A Path to Prevention**Program Description**

A Path to Prevention provides case management services to families who are at-risk of being homeless by providing services to help them maintain or access stable housing. Case Managers also help them apply for public benefits, obtain identity documents, employment guidance, referrals to community resources, as well as support with legal and financial assistance.

Target Population Served: Pregnant women and families with children birth to eighteen

Service Area/Geographic Focus: Hillsborough County

Bilingual Services: Yes – Spanish

Funding Amount: \$472,534

Contact Information:

Address: 6718 North Armenia Avenue
Tampa, FL 33604

Phone: (813) 875-2024

Website: www.DawningFamilyServices.org

Social Media: Facebook – DawningFamilyServices
X – @dawningfs
Instagram – @dawningfs

Subcontracts: None

Housing for Success

Program Description

Housing for Success provides emergency shelter and support services for families and children under the age of 18 who are experiencing homelessness. Families receive individualized, wrap around case management to assist them in ending their homelessness through housing search and placement; financial assistance for housing; referrals to community resources; and post-shelter services to ensure stability.

Target Population Served: Homeless families with children birth to eighteen

Service Area/Geographic Focus: Hillsborough County

Bilingual Services: Yes – Spanish

Funding Amount: \$336,381

Contact Information:

Address: 6718 North Armenia Avenue
Tampa, FL 33604

Phone: (813) 875-2024

Website: www.DawningFamilyServices.org

Social Media: Facebook – DawningFamilyServices
X – @dawningfs
Instagram – @dawningfs

Subcontracts: None

Community Developmental Screening

Program Description

The Community Developmental Screening Program provides monthly community-based developmental screening events for children birth to five years of age. When warranted, the program connects families of children with developmental concerns to appropriate follow-up services (e.g. formal evaluation providers, early intervention, or community based supports). Screenings are conducted in the areas of vision, hearing, speech/language, behavior, and overall development.

Target Population Served: Children birth to five years of age who are not yet in kindergarten

Service Area/Geographic Focus: Hillsborough County

Bilingual Services: Yes – Spanish

Funding Amount: \$1,039,836

Contact Information:

Address: P.O. Box 130449
Tampa, FL 33681

Email: screeningmanager@ecctampabay.org

Website: www.ecctampabay.org

Social Media: Facebook – Ecctampabay

Subcontracts: None

Inclusion Support Services

Program Description

Inclusion Support Services provides child care centers and family child care homes with resources and training to support early childhood development and/or behavioral concerns. Services include on-site observations of children/teachers/classrooms to develop an intervention plan based on strengths, needs, and accommodations for an inclusive setting. An individualized in-home parent education service will bridge continuity of care between the educational setting to the home.

Target Population Served: Early childhood professionals and families with children, birth to five years of age, in child care center or family day care home

Service Area/Geographic Focus: Hillsborough County

Bilingual Services: Yes – Spanish

Funding Amount: \$629,305

Contact Information:

Address: P.O. Box 130449
Tampa, FL 33681

Email: inclusionmanager@ecctampabay.org

Website: www.ecctampabay.org

Social Media: Facebook – Ecctampabay

Subcontracts: None

School Readiness Funding

Program Description

The School Readiness program provides financial assistance to eligible families so they may have access to a network of early care and education programs to help ensure they enter kindergarten ready to succeed. Parents may apply online at www.elchc.org.

Target Population Served: Children birth to nine years of age. Priority is given to children whose parents are economically disadvantaged, children who have been determined to be homeless, at risk of abuse, neglect or exploitation, and children with special needs.

Service Area/Geographic Focus: Hillsborough County

Bilingual Services: Yes – Spanish

Funding Amount: \$1,075,000

Contact Information:

Address: 6302 East Dr. Martin Luther King Jr. Boulevard
Suite 100
Tampa, FL 33619

Phones: (813) 515-2340

Website: www.elchc.org

Social Media: Facebook – ELC of Hillsborough
X – @elchillsborough
Instagram – @elchillsborough

Subcontracts: None

Early Learning and Intervention Program**Program Description**

The Early Learning and Intervention Program provides gap early intervention services for children birth to five years old experiencing delays in development but may not meet the eligibility criteria for Early Steps or Child Find. Easterseals offers caregiver/child intervention services, parent education, and service coordination. It is an in-home program with an option of some service occurring in the child's school setting.

Target Population Served: Partners with children birth to five who are not eligible for services through Early Steps or Child Find

Service Area/Geographic Focus: Hillsborough County

Bilingual Services: Yes – Spanish

Funding Amount: \$712,324

Contact Information:

Address: 2460 Bloomingdale Avenue
Suite 170
Valrico, FL 33596

Phone: (813) 807-9717

Website: www.easterdeals.com/florida

Social Media: Facebook – Easterseals Florida
X – @EasterSealsFL
Instagram – @EasterSealsFL

Subcontracts: None

The Incredible Years

Program Description

The Incredible Years is an evidence-based program providing a 14-week program that focuses on building strong parent-child relationships, and preventing negative behavior through social-emotional learning, self-regulation, and problem-solving. Program sessions are held in the community. This program also provides in home support for individualized family focus.

Target Population Served: Parents/caregivers as well as children ages three to eight years of age with or without a disability

Service Area/Geographic Focus: Hillsborough County

Bilingual Services: Yes – Spanish

Funding Amount: \$879,585

Contact Information:

Address: 2460 Bloomingdale Avenue
Suite 170
Valrico, FL 33596

Phone: (813) 807-9717

Website: www.easterdeals.com/florida

Social Media: Facebook – Easterseals Florida
X – @EasterSealsFL
Instagram – @EasterSealsFL

Subcontracts: None

Autism Is Real**Program Description**

The Family Enrichment Center's Autism Is Real Program provides all-embracing support for families with a child aged 36 months through 4th grade who have been identified as needing neuro development assistance. Services are tailored in-home support to meet the unique needs of each child in their familiar environment, equipping parents/caregivers with the strategies and techniques to manage and positively influence the behavior of the child, offering comprehensive training sessions and workshops designed to empower parents/caregivers with the knowledge and tools needed to effectively support the child.

Individualized Care Plans address the specific services to be provided to each child, assisting each child in developing educational learning skills and coping mechanisms, providing support to help the child to navigate social interactions and emotional challenges and connecting families with community resources, including financial assistance, counseling, and support groups.

Target Population Served: Children 36 months through 4th grade

Service Area/Geographic Focus: Hillsborough County

Bilingual Services: Yes – Spanish

Funding Amount: \$1,279,402

Contact Information:

Address: 1002 East Dr. Martin Luther King Jr. Boulevard
Tampa, FL 33603

Phone: (813) 237-0914

Website: www.fectampa.org

Social Media: None

Subcontracts: None



Kinship Care**Program Description**

The Kinship Care program provides intensive case management for children residing with a relative caregiver or with another caring adult. Services include compassionate help, counseling, training, advocacy, support groups, respite care, legal support, health aide, educational support and access to community resources.

Target Population Served: Children birth through 8th grade

Service Area/Geographic Focus: Hillsborough County

Bilingual Services: No

Funding Amount: \$398,195

Contact Information:

Address: 1002 East Dr. Martin Luther King Jr. Boulevard
Tampa, FL 33603

Phone: (813) 237-0914

Website: www.fectampa.org

Social Media: None

Subcontracts: None

Motivated Minds**Program Description**

The Family Enrichment Center's Motivated Minds Program is a beacon of support for families with children grades 3rd through 8th facing a myriad of childhood challenges. This comprehensive initiative provides crucial assistance in areas such as truancy, school and home behavior, low self-esteem, bullying, anxiety, anger, trauma, character development, and grieving. Additional program services include community resources and linkage, family support, workshops and trainings to help parents/caregivers to better understand and meet the diverse needs of the child/ren in their care.

Target Population Served: Children 3rd through 8th grade

Service Area/Geographic Focus: Hillsborough County

Bilingual Services: No

Funding Amount: \$595,337

Contact Information:

Address: 1002 East Dr. Martin Luther King Jr. Boulevard
Tampa, FL 33603

Phone: (813) 237-0914

Website: www.fectampa.org

Social Media: None

Subcontracts: None

Connecting Kids to Care**Program Description**

Connecting Kids to Care (CKC) is a program designed to reduce the number of eligible but uninsured children through enrollment in healthcare coverage and connecting them to appropriate care. CKC assists families with completing application or coverage renewal support. The program provides education to families and professionals to promote access to quality healthcare.

Target Population Served: Families with children birth through middle school age

Service Area/Geographic Focus: Hillsborough County

Bilingual Services: Yes – Spanish

Funding Amount: \$521,533

Contact Information:

Phone: (813) 995-7005

Website: www.FamilyHealthcareFdn.org

Social Media: Facebook – FamilyHealthcarefdn
Instagram – @thefamilyhealthcarefoundation

Subcontracts: None

CodeMasters (Countywide)**Program Description**

FEF CodeMasters provides youth after-school hands-on opportunities to learn to code and create with technology; to develop skills needed to pursue and succeed in the jobs of the future; and to begin to explore exciting science, technology, engineering, art, and mathematics (STEAM) careers.

Target Population Served: Students 1st through 6th grade

Service Area/Geographic Focus: Hillsborough County Public School HOST Programs, City of Tampa Park & Recreational Centers

Bilingual Services: No

Funding Amount: \$164,787

Contact Information:

Address: 201 East Kennedy Boulevard
Suite 1525
Tampa, FL 33602

Phone: (813) 272-2772

Website: www.fefonline.org/code

Social Media: Facebook – [fefcodemasters](#)
Instagram – [@fefcodemasters](#)

Subcontracts: None

CodeMasters (Strategic Initiative)**Program Description**

FEF CodeMasters provides youth hands-on opportunities to learn to code and create with technology to develop skills needed to pursue and succeed in the jobs of the future, and to begin to explore exciting science, technology, engineering, art, and mathematics (STEAM) careers.

Target Population Served: Students 1st through 8th grade

Service Area/Geographic Focus: Hillsborough County Public School HOST Programs, City of Tampa Park & Recreational Centers in the following zip codes: 33603, 33610 & 33619

Bilingual Services: No

Funding Amount: \$194,198

Contact Information:

Address: 201 East Kennedy Boulevard
Suite 1525
Tampa, FL 33602

Phone: (813) 272-2772

Website: www.fefonline.org/code

Social Media: Facebook – [fefcodemasters](#)
Instagram – [@fefcodemasters](#)

Subcontracts: None

Successful Start

Program Description

Successful Start aims to address the educational needs of students by providing VPK to 3rd grade mathematics teachers in Hillsborough County Public Schools a high-quality professional development training.

Target Population Served: Elementary school (VPK – 3rd grade) mathematics teachers

Service Area/Geographic Focus: Hillsborough County Public Schools

Bilingual Services: No

Funding Amount: \$964,546

Contact Information:

Address: 4600C University Center
Tallahassee, FL 32839

Phone: (850) 644-7619

Website: www.successfulstarttampa.com

Social Media: None

Subcontracts: None

Girl Scout Troop Program

Program Description

The Girl Scout Troop Program is designed to equip girls in kindergarten to fifth grade reach her full potential. Girls will participate in the Girl Scout Leadership Experience (GSLE) which offers a strong sense of self, positive values, challenge seeking, healthy relationships, and community problem solving. The GSLE combines a variety of activities with supportive, mentoring relationships and the three Girl Scout processes (Girl-Led, Cooperative Learning, and Learning by Doing). The program is supported by a tradition-driven, emotionally safe space for girls.

Target Population Served: Girls from kindergarten to fifth grade

Service Area/Geographic Focus: Serving girls in the following zip codes: 33603, 33604, 33610, and 33619

Bilingual Services: No

Funding Amount: \$174,345

Contact Information:

Address: 4610 Eisenhower Boulevard
Tampa, FL 33634

Phone: (813) 281-4475

Website: www.gswcf.org

Social Media: Facebook – GirlScoutsWCF
X – @gswcf
Instagram – @gswcf

Subcontracts: None

Children's Board Free Tuesday**Program Description**

Children's Board Free Tuesday provides free admission into Glazer Children's Museum for children and their parents or caregivers on the first Tuesday of each month. Monthly free admission will be offered from 9:30am to 5pm. (Hours subject to change in summer months).

Target Population Served: Families with children birth to ten years of age

Service Area/Geographic Focus: Hillsborough County

Bilingual Services: Yes – Spanish

Funding Amount: \$76,013

Contact Information:

Address: 110 West Gasparilla Plaza
Tampa, FL 33602

Phone: (813) 443-3861

Website: www.glazermuseum.org

Social Media: Facebook – Glazer Children's Museum
X – @Glazermuseum
Instagram – @glazerchildrensmuseum

Subcontracts: None

Learn & Play Tampa Bay**Program Description**

The Learn & Play Tampa Bay program provides quality early learning experiences at the seven Children's Board Family Resource Centers. The program delivers weekly in-person developmental classes and provides take home activities that promote early learning and school readiness.

Target Population Served: Children birth to age five and their parents or caregivers

Service Area/Geographic Focus: Hillsborough County

Bilingual Services: No

Funding Amount: \$355,056

Contact Information:

Address: 110 West Gasparilla Plaza
Tampa, FL 33602

Phone: (833) 426-7529

Website: www.glazermuseum.org

Social Media: Facebook – LearnPlayTampaBay
X – @Glazermuseum
Instagram – @glazerchildrensmuseum

Subcontracts: None



GULF COAST JEWISH FAMILY AND COMMUNITY SERVICES

Good Afternoon Friends and Amigos

Program Description

Good Afternoon Friends and Amigos is an after school program that provides tutoring and homework assistance. Parents or caregivers of the students will be involved in their education, development, and family activities. Home visitation resources are available to parents and caregivers to help meet the child's identified needs.

Target Population Served: Kindergarten through 5th grade students enrolled at Reddick and Robinson Elementary schools

Service Area/Geographic Focus: Wimauma and Plant City

Bilingual Services: Yes – Spanish

Funding Amount: \$466,943

Contact Information:

Address: 14041 Icot Boulevard
Clearwater, FL 33760

Phone: (727) 479-1800, ext. 3101

Website: www.gcjfcs.org

Social Media: Facebook – Gulf Coast JFCS
Instagram – @GulfCoastJFCS

Subcontracts: None





GULF COAST JEWISH FAMILY AND COMMUNITY SERVICES

Padres De Crianza

Program Description

Padres De Crianza provides support services and social opportunities. The program is a Kinship Model, providing support services and social opportunities to non-dependency Hispanic/Latino caregivers and children birth through middle school age. The program will support children and families by providing case management, home visits, support groups, linkage to community supports, and telephone crisis intervention.

Target Population Served: Hispanic/Latino-identifying relative or non-relative caregivers with children birth to middle school age in their care who are not involved in state dependency care.

Service Area/Geographic Focus: Hillsborough County

Bilingual Services: Yes – Spanish and English

Funding Amount: \$356,347

Contact Information:

Address: 3550 West Waters Avenue
Tampa, FL 33614

Phone: (813) 352-5766

Website: www.gcjfccs.org

Social Media: Facebook – Gulf Coast JFCS
Instagram – @GulfCoastJFCS

Subcontracts: None





GULF COAST JEWISH FAMILY AND COMMUNITY SERVICES

Teen Parent Engagement Program

Program Description

The Teen Parent Engagement Program is a leadership program for teen moms and dads. Our primary strategies are a diverse mix of workshops, home visitation, education, screening, mentoring, and case management. On-going engagement activities include training comprised of a two-day group retreat, monthly group workshops, varied mentorship experiences, and in-home visits. In-home visits include case management, developmental screenings, and parenting education.

Target Population Served: Pregnant Teens and Parents ages fourteen to nineteen years of age

Service Area/Geographic Focus: Hillsborough County

Bilingual Services: Yes – Spanish and Creole

Funding Amount: \$302,107

Contact Information:

Address: 3550 West Waters Avenue
Suite 250
Tampa, FL 33614

Phone: (813) 930-7103

Website: www.gcjfcs.org

Social Media: Facebook – Gulf Coast JFCS
Instagram – @GulfCoastJFCS

Subcontracts: None



HEALTHY START COALITION OF HILLSBOROUGH COUNTY

Healthy Families Hillsborough

Program Description

Healthy Families Hillsborough is a nationally accredited home visitation program that supports parents by offering wrap-around services during and after pregnancy. The program offers personal and emotional support, parenting education, child developmental screenings, and helps to set goals that are individual to participating families with children up to age five. Services are voluntary and flexible to work with busy schedules.

Target Population Served: Parents expecting a baby or have a baby less than two months of age

Service Area/Geographic Focus: Hillsborough County

Bilingual Services: Yes – Spanish

Funding Amount: \$2,409,132

Contact Information:

Address: 2806 North Armenia Avenue
Suite 100
Tampa, FL 33607

Phone: (813) 233-2800

Website: www.healthystartcoalition.org

Social Media: Facebook – HSCHillsborough
X – @HSCHillsborough
Instagram – @HealthyStartHillsborough

Subcontracts: Champions for Children
Children's Home Network



HEALTHY START COALITION OF HILLSBOROUGH COUNTY

HealthySteps Hillsborough

Program Description

HealthySteps Hillsborough supports families and their children age birth to three years by providing parenting education, information, referrals, and care coordination. Based in pediatric offices, HealthySteps Hillsborough connects with families during and between well-child visits to assist families with parenting concerns and challenges and meet families' specific needs to support strong parent/child attachment and healthy child development.

Target Population Served: Families with children age birth to three years who are pediatric care patients of USF Health Riverview Pediatrics and USF Pediatric NICU. Follow up clinics at USF Campus and 17 Davis Medical Building, 17 Davis General Pediatrics, and USF HealthPark Pediatrics.

Service Area/Geographic Focus: Hillsborough County

Bilingual Services: Yes – Spanish

Funding Amount: \$1,672,373

Contact Information:

Address: 2806 North Armenia Avenue
Suite 100
Tampa, FL 33607

Phone: (813) 539-0884

Website: www.healthystartcoalition.org

Social Media: Facebook – HSCHillsborough
X – @HSCHillsborough
Instagram – @HealthyStartHillsborough

Subcontracts: None





HEALTHY START COALITION OF HILLSBOROUGH COUNTY

Safe Baby Plus

Program Description

Safe Baby Plus is an educational program delivered to parents prior to hospital discharge with a newborn addressing the three leading causes of preventable infant death including: choosing safe caregiver, preventing shaken baby syndrome, and practicing safe sleep. The program provides a developmental screening program for infants during their first year of life. The program also provides increased access and linkages to resources and safety education for pregnant women and women with children who are receiving the Special Supplemental Nutrition Program at Hillsborough County WIC sites. Safe Baby training and educational materials are also offered by certified Safe Baby instructors to early childhood professionals.

Target Population Served: Families with infants and professionals such as nurses, physicians, social workers or child welfare staff

Service Area/Geographic Focus: Hillsborough County

Bilingual Services: Yes – Spanish

Funding Amount: \$1,748,571

Contact Information:

Address: 2806 North Armenia Avenue
Suite 100
Tampa, FL 33607

Phone: (813) 849-7985

Website: www.healthysafebaby.org

Social Media: Facebook – HSHillsborough
X – @HSHillsborough
Instagram – @HealthyStartHillsborough

Subcontracts: St. Joseph's Hospital



Water Warriors**Program Description**

The Water Warriors program provides swim lessons and water safety education for beginner swimmers. Each lesson is 45 minutes and teaches skills such as floating, breath control, submerging, and water safety education. Participants and their parents/caregivers will also learn about water safety topics such as beach safety, home pool safety, and CPR.

Target Population Served: Ages three to eighteen

Service Area/Geographic Focus: Hillsborough County – Facility located in Brandon, Florida

Bilingual Services: No

Funding Amount: \$75,977

Contact Information:

Address: 405 Beverly Boulevard
Brandon, FL 33511

Phone: (813) 689-0908

Website: www.High5inc.org

Social Media: None

Subcontracts: None

Quality Early Education System

Program Description

The Quality Early Education System supports children and families by providing training, coaching, professional development, resources and targeted specialized early childhood program intervention to enhance the quality of operations and learning environment.

The Conscious Awareness Learning Model (CALM) provides trainings and on-site instruction to teachers and families in social-emotional learning using the Conscious Discipline® approach to implement model activities in the classroom.

Literacy coaches work to develop pre-reading skills through small group activities with teachers in preschool settings. In addition, parents or caregivers receive books and literacy activities to use at home.

Target Population Served: Early Childhood Education providers and families with children birth to age five

Service Area/Geographic Focus: Hillsborough County

Bilingual Services: Yes – Spanish

Funding Amount: \$2,706,665

Contact Information:

Address: 1602 North 15th Street
Suite 248
Tampa, FL 33605

Phone: (813) 259-6415

Website: www.calmhcc.org
www.earlyliteracymatters.com

Social Media: X – @HCC_QEES
Instagram – @HCCQEES

Subcontracts: None



Tech Connect

Program Description

Tech Connect program equips students that are technologically challenged with the tools and knowledge required for digital access. Project staff work in collaboration with Hillsborough County Public Schools to help identify and plan for students.

Target Population Served: Families with elementary age school students enrolled in public schools (not virtual school)

Service Area/Geographic Focus: Hillsborough County

Bilingual Services: Yes – Spanish

Funding Amount: \$573,310

Contact Information:

Address: 2306 North Howard Avenue
Tampa, FL 33607-2613

Phone: (813) 574-0283

Website: www.educationfoundation.com

Social Media: Facebook – Hillsborough Education Foundation
X – @Hillsedufnd
Instagram – @Hillsedufnd

Subcontracts: None



La Red de Padres Activos/Network of Active Parents**Program Description**

La Red de Padres Activos is a parent engagement and family strengthening program that seeks to engage Latino parents in the education of their children and support the parent's own personal growth and development by hosting weekly workshops to educate parents about resources, parenting skills, child development stages, and navigation of the school system so that they may better understand their role and be more involved in their child's success in school. While the parents participate in social networking and educational workshops, La Red engages their children in literacy and learning activities.

Target Population Served: Latino parents with children three years of age through 8th grade

Service Area/Geographic Focus: Plant City, North Tampa, West Tampa, Drew Park, Brandon and Ruskin/Wimauma

Bilingual Services: Yes – Spanish

Funding Amount: \$1,955,709

Contact Information:

Address: 7825 North Dale Mabry Hwy
Suite 102
Tampa, FL 33614

Phone: (813) 936-7700

Website: www.Hispanicservicescouncil.org

Social Media: Facebook – Hispanic Services Council
X – HispanicSVC

Subcontracts: None

Building Family Financial Skills

Program Description

Building Family Financial Skills provides financial wellness training for parents/caregivers. The program uses “Your Money, Your Goals” curriculum through interactive sessions that uses tools to build everyone’s own financial wellness plan and connect families to local financial related sources. A guest speaker from a financial institution is present for one session in each series to present material and to use as a resource.

Target Population Served: Families with children,. birth to middle school

Service Area/Geographic Focus: Hillsborough County

Bilingual Services: No

Funding Amount: \$99,999

Contact Information:

Address: 5301 West Cypress Street
Tampa, FL 33607

Phone: (813) 341-9199

Website: www.tampaha.org

Social Media: Facebook – Tampa Housing Authority
X – @Tampahaorg
Instagram – @Tampahaorg

Subcontracts: None

Building Hope

Program Description

The Building Hope program provides care coordination and case Management, ASQ-3 development screenings and follow-up sessions with parents for preschool-age children, and year-round afterschool and summer programming. Taking a needs-based approach, the program helps families build resiliency, an atmosphere of accessibility with specific areas of focus including: supportive relationships; stable/safe living and equitable environments; constructive social engagement and a sense of connectedness; and learning social and emotional competencies. Building Hope is built on the Community Health Worker model, collaborating with residents from the target communities as staff and/or volunteers to use their unique experiences to assist in the program design and ongoing implementation.

Target Population Served: Families with children, birth through middle school

Service Area/Geographic Focus: THA properties and their surrounding zip codes: Encore (zip code 33602), Belmont Heights Estates (zip code 33605), and West River (zip code 33607)

Bilingual Services: Yes – Spanish

Funding Amount: \$1,215,970

Contact Information:

Address: 5301 West Cypress Street
Tampa, FL 33607

Phone: (813) 341-9101, ext. 2071

Website: www.tampaha.org

Social Media: Instagram – @tampahaorg

Subcontracts: None



Village Link Up

Program Description

Village Link Up provides case management, parent education, and supportive services with the goal of increasing parent engagement in child education and overall family well-being. The coordination of services to families supports the educational goals and academic success of children. The program assists in the development of a support plan with families, hosts educational workshops and offers referrals to community resources.

Target Population Served: Parents/caregivers with children birth to elementary school

Service Area/Geographic Focus: Robles Park Village, C. Blythe Andrews, Seminole Park, Belmont Heights, Moses White Estates, Gardens at South Bay, and Arbors at Padgett Estates in Hillsborough County

Bilingual Services: Yes – Spanish

Funding Amount: \$439,987

Contact Information:

Address: 5301 West Cypress Street
Tampa, FL 33607

Phone: (813) 341-9101 ext. 2140

Website: www.tampaha.org

Social Media: Facebook – Tampa Housing Authority
X – @Tampahaorg
Instagram – @Tampahaorg

Subcontracts: None

Youth Success

Program Description

Youth Success provides year-round educational enrichment opportunities and financial literacy. The program services include reading and writing activities, access to “MyOn” for online reading activities, financial literacy education, STEAM, and experiential exposure with field trips.

Target Population Served: Children kindergarten through 5th grade

Service Area/Geographic Focus: Hillsborough County

Bilingual Services: No

Funding Amount: \$354,621

Contact Information:

Address: 5301 West Cypress Street
Tampa, FL 33607

Phone: (813) 341-9101 ext. 2200

Website: www.tampaha.org

Social Media: Facebook – Tampa Housing Authority
X – @tampahaorg
Instagram – @Tampahaorg

Subcontracts: None



Music Outreach Program**Program Description**

The Music Outreach Program teaches children about the Ukulele, a musical instrument. They acquire knowledge of music definitions, practice hands-on chords, learn to play songs and earn their instruments. The program also offers instructions on musical topics and musical knowledge.

Target Population Served: Children Kindergarten through 8th grade

Service Area/Geographic Focus: Hillsborough County Public Schools HOST Program, City of Tampa Park & Recreational Centers in the following zip codes: 33603, 33610, and 33619

Bilingual Services: No

Funding Amount: \$102,059

Contact Information:

Address: 1217 Lake Magdalene Hill Drive
Tampa, FL 33613

Phone: (813) 613-0239

Website: www.instruments4life.com

Social Media: Facebook – [instruments4life](https://www.facebook.com/instruments4life)
Instagram – [@instruments4life](https://www.instagram.com/instruments4life)

Subcontracts: None

Achievers

Program Description

Joshua Way of Hope Achievers program works with students enrolled in 3rd through 8th grade and their parents to offer academic support services along with social and behavioral training. The focus of this program is to enhance academic success and on-time grade promotion for each student. We teach students individual learning strategies to improve their reading, comprehension, vocabulary, math skills, organization and study skills, and provide social skills and behavior skills training to students. We offer support training to parents to include Managing Anger, How to Deal with Stress, Fostering Healthy Communication, Enhancing your Child's Self-Esteem, and so many more. Families also receive case management and resources to reduce any barriers to their students' academic success.

Target Population Served: Families with students in 3rd through 8th grade

Service Area/Geographic Focus: Hillsborough County

Bilingual Services: Yes – Spanish

Funding Amount: \$1,260,000

Contact Information:

Address: 5701 East Hillsborough Avenue
Suite 2453
Tampa, FL 3361

Phone: (813) 373-5008

Website: www.joshuawayofhope.org

Email: info@joshuawayofhope.org

Social Media: Facebook – Joshua Way Hope
Instagram – @JoshuaWayofHope

Subcontracts: None

Building a Stronger Me**Program Description**

The Building a Stronger Me program provides character development training classes and activities based on the Botvin Life Skills evidence based program. Children will participate in five-character development training classes discussing the four learning styles with topic/activities including role-playing scenarios, literacy through game play, toolbox techniques with topics, and identifying triggers. The program provides referrals to parent/caregivers for services needed based on observations and communication.

Target Population Served: Children 3rd through 8th grade

Service Area/Geographic Focus: Hillsborough County Public Schools HOST Program, City of Tampa Park & Recreational Centers in the following zip codes: 33603, 33610, and 33619

Bilingual Services: No

Funding Amount: \$109,642

Contact Information:

Address: 5701 East Hillsborough Avenue
Suite 2453
Tampa, FL 33610

Phone: (813) 546-1896

Website: www.Joshuawayofhope.org

Social Media: Facebook – Joshua Way Hope
Instagram – @JoshuaWayofHope

Subcontracts: None

Life Skills 360 Training Institute**Program Description**

The Life Skills 360 Training Institute provides a robust training program that teaches students an array of skills, techniques, and tools to utilize in their journey of life. The basic foundation of the Life Skills program is built upon highly regarded evidence-based prevention curriculum. Alongside this, we incorporate interactive exercises and group discussions to ensure an engaging learning experience. Students learn how to manage anger, social skills, self-esteem, decision making, how we deal with stress and effective communication.

Target Population Served: Children 3rd through 8th grade

Service Area/Geographic Focus: City of Tampa and Plant City

Bilingual Services: No

Funding Amount: \$152,158

Contact Information:

Address: 5701 East Hillsborough Avenue
Suite 2453
Tampa, FL 336101

Phone: (813) 546-1896

Website: www.Joshuawayofhope.org

Social Media: Facebook – Joshua Way Hope
Instagram – @JoshuaWayofHope

Subcontracts: None

Woven Empowerment – WE Program**Program Description**

The WE Program collaborates with families to provide children from birth to age eight person-centered and strengths-based case management, mentoring, educational workshops, and tangible assistance for basic needs. In the WE Program, children can participate in The Zone, an after-school program.

Target Population Served: Families with children up to age eight who have been impacted by homelessness or are at risk of homelessness

Service Area/Geographic Focus: Target zip codes of 33602, 33603, 33604, 33605, 33606, 33607, 33609, 33610, 33612, 33614, and 33617

Bilingual Services: No

Funding Amount: \$253,596

Contact Information:

Address: 3309 North 15th Street
Tampa, FL 33605

Phone: (813) 803-0220

Website: www.justinitiative.com

Social Media: Facebook – justinitiative
X – @justinitiative
Instagram – @justinitiative

Subcontracts: None



C.R.E.A.T.E. School Age Program**Program Description**

The Children's Recreation, Education, Arts and Therapeutic Experience (C.R.E.A.T.E.) is an afterschool program providing children with a nurturing therapeutic environment designed to alleviate the impacts of trauma and homelessness. It offers cooperative play, Science, Technology, Engineering, Art and Math (STEAM) activities and engages parents or caregivers in family events.

Target Population Served: Elementary age children experiencing or who have experienced homelessness or housing instability

Service Area/Geographic Focus: Elementary age children who reside at Miracle Place or attend Sullivan or Mango Elementary

Bilingual Services: Yes – Spanish

Funding Amount: \$556,227

Contact Information:

Address: 2002 North Florida Avenue
Tampa, FL 33602

Phone: (813) 209-1000

Website: www.metromin.org

Social Media: Facebook – Metropolitan Ministries
X – @metroministries
Instagram – @metro_min

Subcontracts: None



First Hug

Program Description

First Hug is an intensive case management program that uses a trauma informed care approach to stabilize homeless families and address barriers to self-sufficiency. Services include connecting families to community resources, early intervention or education, child care, employment, housing search/placement, and home safety.

Target Population Served: Homeless families with children birth through middle school

Service Area/Geographic Focus: Hillsborough County

Bilingual Services: Yes – Spanish

Funding Amount: \$1,448,939

Contact Information:

Address: 2002 North Florida Avenue
Tampa, FL 33602

Phone: (813) 209-1000

Website: www.metromin.org

Social Media: Facebook – Metropolitan Ministries
X – @metroministries
Instagram – @metro_min

Subcontracts: None



Pathways to Hope

Program Description

Pathways to Hope is a homeless prevention program that provides support to families who are experiencing economic instability and/or housing insecurity. The program is designed to provide support to families based on their personal, social, and community networks' strengths and is specially tailored to each family based on their current situation and needs. The goal is to assist families with attaining housing stability.

Services include access to case management support, educational workshops, goal planning, and community resources.

Target Population Served: Families with children in Elementary and Middle School

Service Area/Geographic Focus: Families with children at the following Hillsborough County Public Schools: Lewis, Robinson, Forest Hills, Oak Park, Greco, Jennings, Mango, Pinecrest, Dover, and Turkey Creek.

Bilingual Services: Yes – Spanish

Funding Amount: \$1,087,192

Contact Information:

Address: 2002 North Florida Avenue
Tampa, FL 33602

Phone: (813) 209-1006

Website: www.metromin.org

Social Media: Facebook – Metropolitan Ministries
X – @metroministries
Instagram – @metro_min

Subcontracts: Hispanic Services Council



***MOSI in Motion at the Children's Board Family Resource Center
in Plant City***

Program Description

MOSI in Motion will provide Science, Technology, Engineering, and Math (STEM) learning opportunities and family engagement at the Children's Board Family Resource Center in Plant City. The program will support children and families by offering access to an interactive and educational exhibit known as "Be the Astronaut" that includes missions to space and a reading nook. In addition, the program will offer STEM workshops and family rights that provide collaborative and hands on family activities.

Target Population Served: Children from birth to 11 years old and their families

Service Area/Geographic Focus: East Hillsborough County

Bilingual Services: Some Spanish materials, as requested

Funding Amount: \$125,000

Contact Information:

Address: 4801 East Fowler Avenue
Tampa, FL 33617

Phone: (813) 987-6000

Website: www.mosi.org

Social Media: Facebook – MOSI
X – @mositampa
Instagram – @mosi_tampa
LinkedIn – MOSI Tampa

Subcontracts: None



One More Child Family Support

Program Description

The Family Support Program at One More Child provides help to families that are experiencing tough times and need a little extra support. Using evidence-based practices our team provides training and assistance that will improve parenting skills, develop household management strategies, and increase wraparound support to strengthen families. This program uses an individualized approach that will help parents better connect with their children, reduce stress, and increase meaningful connections to community supports. Services are provided in a combination of settings, both in home and in the community.

Target Population Served: Parents/Caregivers with children from birth through age eight

Service Area/Geographic Focus: 33604, 33610, 33614, 33568, and 33511

Bilingual Services: No

Funding Amount: \$151,200

Contact Information:

Address: 1015 Sikes Boulevard
Lakeland, FL 33815

Phone: (813) 252-9762

Website: www.onemorechild.org

Social Media: Facebook – OneMoreChild
X – @One_MoreChild
Instagram – @OneMoreChild

Subcontracts: None

PARENTS AND CHILDREN ADVANCE TOGETHER (PCAT) LITERACY MINISTRIES

South County Literacy Initiative

Program Description

The South County Literacy Initiative is an after school program designed to assist low performing students by increasing their reading and comprehension skills with one-on-one or group instruction. An individualized instruction plan is developed with teachers. Parents are engaged by bilingual personnel, as needed, to involve them in their child's educational success.

Target Population Served: Kindergarten, 1st and 2nd grade students

Service Area/Geographic Focus: Ruskin Elementary School

Bilingual Services: Yes – Spanish

Funding Amount: \$569,105

Contact Information:

Address: 5004 East Fowler Avenue
Suite C-345
Tampa, FL 33617

Phone: (813) 467-6826

Website: www.pcatliteracyministries.org

Social Media: None

Subcontracts: None



PARENTS AND CHILDREN ADVANCE TOGETHER (PCAT) LITERACY MINISTRIES

Sulphur Springs Literacy Initiative

Program Description

The PCAT Literacy program provides after school tutoring to kindergarten students who are reading below level. Students are referred to our program by their classroom teacher and are eligible to receive tutoring two days a week in a small group or one-on-one setting.

Target Population Served: Kindergarten students

Service Area/Geographic Focus: Sulphur Springs K-8 Community School

Bilingual Services: Yes – Spanish, French and Haitian Creole

Funding Amount: \$177,756

Contact Information:

Address: 5004 East Fowler Avenue
Suite C-345
Tampa, FL 33617

Phone: (813) 467-6826

Website: www.pcatliteracyministries.org

Social Media: None

Subcontracts: None



Learning Connections

Program Description

Learning Connections is an evidence-based program for special tutoring mediation based on the Feuerstein Instrumental Enrichment method. The program teaches struggling students how to analyze issues and build cognitive strategies while also enhancing their self-esteem.

Target Population Served: Students in 3rd through 8th grade

Service Area/Geographic Focus: Specific zip codes of 33604, 33605, 33610, 33612, 33617, 33510, and 33511

Bilingual Services: No

Funding Amount: \$96,958

Contact Information:

Address: 7402 North 56th Street
Suite 300 B
Tampa, FL 33617-7733

Phone: (813) 220-7468

Website: www.positivedevelopment.net

Social Media: Facebook – Positive Family Partners
LinkedIn – Positive Family Partners Inc.

Subcontracts: None

Empowering a Community with Hope (E.A.C.H. One)**Program Description**

The E.A.C.H. One Initiative provides in-home support and case management services for families. The services support overall well-being through family team conferencing and developing support plans to address identified needs. Developmental screenings are offered to young children and support groups are available to youth.

Target Population Served: Families with children birth through 8th grade

Service Area/Geographic Focus: Zip codes 33604, 33605, 33607, 33610, 33612, 33613, 33617 and 33619

Bilingual Services: Yes – Spanish

Funding Amount: \$1,150,000

Contact Information:

Address: 5118 North 56th Street
Suite 224
Tampa, FL 33610

Phone: (813) 977-7677

Website: www.positivespinfl.org

Social Media: Facebook – Positive Spin Inc

Subcontracts: None



Children's Vision Health and Safety Services**Program Description**

The Children's Vision Health and Safety Services program provides vision screenings, eye safety, education at the Children's Board Family Resource Centers, childcare centers, and other community locations. It may provide eyewear for children with an identified vision condition and their parents/caregivers. The program supports children and families by providing early identification of vision health conditions, to vision care exercises, and referral for medical follow up and ongoing support to promote vision health.

Target Population Served: Children birth to fourteen and their parents/caregivers

Service Area/Geographic Focus: Hillsborough County

Bilingual Services: Yes – Spanish

Funding Amount: \$706,223

Contact Information:

Address: 9200 Seminole Boulevard
Seminole, FL 33772

Phone: (813) 874-2020

Website: www.pvfla.org

Social Media: Facebook – Preserve Vision Florida
X – @preservevision
Instagram – @preservevisionflorida

Subcontracts: None



***Giving Resources and Opportunities with Trust and Hope
(GROWTH) with Doulas and Dads***

Program Description

The GROWTH with Doulas and Dads program provides pregnant women with Doula support services that promote healthy births and mother/child bonding. Parents or caregivers can receive prenatal support services, health education, mentoring, hospital labor and delivery assistance, breastfeeding, and nutritional guidance. In addition, the 24/7 Dad program increases “pro-fathering” knowledge, skills, and attitudes through structured weekly education sessions.

Target Population Served: Pregnant women and/or caregivers of children birth to eight weeks of age and fathers/caregivers of children birth to age fourteen

Service Area/Geographic Focus: Hillsborough County

Bilingual Services: Yes – Spanish

Funding Amount: \$951,479

Contact Information:

Address: 2902 North Armenia Avenue
Suite 100
Tampa, FL 33607

Phone: (813) 712-6300

Website: www.reachupincorporated.org

Social Media: Facebook – Reachup Inc.
X – @reachup_inc
Instagram – @reachup_in

Subcontracts: Champions for Children



Global Explorers Program

Program Description

The Global Explorers Program provides services to promote character development through language exposure classes afterschool and summertime. The program will support children and families by exposing participants to new cultures, communications skills in a foreign language, and prepare participants to be global citizens. The program will teach the participants how to speak Spanish, Arabic, and Mandarin.

Target Population Served: Children kindergarten through 5th grade

Service Area/Geographic Focus: Hillsborough County Public Schools HOST Program, City of Tampa Park & Recreational Centers in the following zip codes: 33603, 33610, and 33619

Bilingual Services: Yes – Spanish

Funding Amount: \$151,200

Contact Information:

Address: 8056 North 56th Street
Tampa, FL 33617

Phone: (813) 530-2313

Website: www.redefinierswl.org

Social Media: Facebook – Redefiners World Languages
X – @redefinierswl
Instagram – @redefinierswl

Subcontracts: None



Multilingual Citizens Program (MCP)**Program Description**

The Multilingual Citizens Program (MCP) provides an evidenced-informed education program aimed at skill development critical to today's workforce, providing outcome-measured courses in English and Spanish for parents/caregivers and their children through distinct courses at the MCP office and Children's Board Family Resource Centers in North Tampa, Temple Terrace, Central Tampa, Town 'N Country, South County, Brandon, and Plant City, or in select Boys and Girls Clubs.

Target Population Served: Parents/Caregivers and children ages five to twelve

Service Area/Geographic Focus: Hillsborough County

Bilingual Services: Yes – Spanish

Funding Amount: \$1,235,925

Contact Information:

Address: 8056 North 56th Street
Tampa, FL 33617

Phone: (813) 530-2313

Website: www.redefinerswl.org

Social Media: Facebook – Redefiners World Languages
X – @redefinerswl
Instagram – @redefinerswl

Subcontracts: None



myON Reader**Program Description**

The Read on myON Project provides access to a digital library to all children from birth through 8th grade in Hillsborough County. The program offers literacy tools and a large collection of enhanced digital books with content in English, French, and Spanish to encourage reading.

Target Population Served: Children birth through 8th grade

Service Area/Geographic Focus: Hillsborough County

Bilingual Services: Yes – Spanish and French

Funding Amount: \$100,000

Contact Information:

Address: 2911 Peach Street
Wisconsin Rapids, WI 54494

Email: streetteam@myon.com

Website: www.readonmyon.com

Social Media: Facebook – Readonmyon
X – @myonreader

Subcontracts: None



Coaching Dreams Into Success

Program Description

The Coaching Dreams Into Success (CDIS) program provides empowers families to prioritize well-being through interactive workshops, life skill sessions and artistic expression events that inspire curiosity and a love for learning. The program's mission is to enhance self-esteem, foster self-sufficiency and strengthen family bonds, promoting personal growth and lasting connections.

Target Population Served: Families with children ages six to fourteen

Service Area/Geographic Focus: Hillsborough County

Bilingual Services: Yes – Spanish

Funding Amount: \$338,558

Contact Information:

Address: 9309 North Florida Avenue
Suite 101
Tampa, FL 33612

Phone: (813) 559-9545

Website: www.therectampa.org

Social Media: Facebook – The Resource Empowerment Centre

Subcontracts: None



Villages CAFÉ**Program Description**

Villages Children and Families Engaging (CAFÉ) program provides in person positive social behavior, parental engagement, and resource navigation support to parents and children. The program offers workshops, mentoring, family success planning, and sharing community resources.

Target Population Served: Families with children ages nine through middle school

Service Area/Geographic Focus: Hillsborough County

Bilingual Services: No

Funding Amount: \$465,811

Contact Information:

Address: 9309 North Florida Avenue
Suite 101
Tampa, FL 33612

Website: www.therectampa.org

Social Media: None

Subcontracts: None



Popup Adventure Playground Project**Program Description**

Rooted in Play's mission is to ensure that all children have regular access to self-directed play opportunities. We accomplish this by hosting free, monthly popup adventures at City of Tampa playgrounds, share information and resources on the importance of play with parents and caregivers, and conduct play workshops for early childhood professionals.

Target Population Served: Children, families, and professionals

Service Area/Geographic Focus: Target zip codes: 33602, 33604, 33607, 33614, and 33611

Bilingual Services: No

Funding Amount: \$55,595

Contact Information:

Address: 7611 South Sparkman Street
Tampa, FL 33616

Phone: (813) 494-2637

Website: www.rootedinplay.org

Social Media: Facebook – Rooted in Play
Instagram – @rootedinplayorg

Subcontracts: None



Foster Grandparent Program with Readers in Motion**Program Description**

Foster Grandparent Program with Readers in Motion provides intergenerational tutoring and mentoring by “grandparent” role models in Kindergarten, 1st and 2nd grade classrooms. The program also offers special activities including at home learning materials, reading challenges and Science, Technology, Engineering and Math (STEM) events for the whole family.

Target Population Served: Kindergarten, 1st and 2nd grade students

Service Area/Geographic Focus: B. T. Washington and Mendenhall Elementary Schools

Bilingual Services: Yes – Spanish

Funding Amount: \$338,676

Contact Information:

Address: 1306 West Sligh Avenue
Tampa, FL 33604

Phone: (813) 932-5228

Website: www.seniorsinservice.org

Social Media: Facebook – Seniors in Service of Tampa Bay Inc.

Subcontracts: None



Middle School Youth Opportunity

Program Description

The Skills Center Middle School Youth Opportunity Program (YO) empowers middle school students by using athletics as a catalyst for academic success, life skills development, mentorship, and holistic health. Through a combination of athletic engagement, academic support, and life-skills mentoring and YO aims to ensure each participant achieves on-time grade promotion.

Our YO program introduces a comprehensive set of resources designed to support both middle school youth and their parents/caregivers. For students, YO promotes academic growth, mental and physical wellness, and the acquisition of essential life skills. For parents and caregivers, the program offers increased access to community resources and information to support their youth's development and overall family well-being.

Target Population Served: Middle school-aged youth

Service Area/Geographic Focus: Hillsborough County

Bilingual Services: Yes – Spanish

Funding Amount: \$967,493

Contact Information:

Address: 5107 North 22nd Street
Tampa, FL 33610

Phone: (813) 703-1324

Website: www.theskillscenter.org

Social Media: Facebook – The Skills Center
Instagram – @theskillscenter

Subcontracts: None

Family Safety from Domestic Violence

Program Description

The Family Safety from Domestic Violence program provides case management and support services at the Outreach Office. The program offers safety planning, support groups, linkage to community resources, and assistance with filing injunctions for protection.

Target Population Served: Families experiencing domestic violence

Service Area/Geographic Focus: Hillsborough County

Bilingual Services: Yes – Spanish

Funding Amount: \$374,025

Contact Information:

Address: 4415 West Osborne Avenue
Tampa, FL 33614

Phone: (813) 749-8764

Website: www.thespring.org

Social Media: Facebook – The Spring of Tampa Bay
X – @TheSpringTB
Instagram – @thespringtb

Subcontracts: None

Mobile Health and Safety Education

Program Description

The Mobile Health and Safety Education program provides services in community-based locations and at Children's Board Family Resource Centers. This program includes both mobile classroom health and safety education and access to medical services through a mobile medical clinic.

The program also provides classes at your site with a focus on educating children in age-appropriate ways that make learning about health and safety fun and educational. Caregiver education is also provided related to CPR/First Aid certification, car seat safety and so much more. To learn more about our classes offered and to submit a request for services please visit www.stjoesmobile.org.

The Mobile Medical Clinic supports children and families by providing opportunities for caregivers and their children to participate in developmental screening, mobile/medical pediatric health services (including well child visits and immunizations), and hearing/vision screenings.

Target Population Served: Children birth through eighteen years of age and their families

Service Area/Geographic Focus: Hillsborough County

Bilingual Services: Yes – Spanish

Funding Amount: \$1,270,438

Contact Information:

Address: 4600 North Habana Avenue
Suite 26
Tampa, FL 33614

Phone: (813) 615-0589

Website: baycare.org/sjch

Social Media: Facebook – St. Joseph's Children's Hospital Foundation
Instagram – @Baycare

Subcontracts: None



Community Maternity Clinic**Program Description**

The Community Maternity Clinic provides high-risk prenatal care and monitoring. The program also provides participants with wraparound services such as care coordination, lactation support, dietitian support, education on infant safety, and referrals for services to other resources in the community.

Target Population Served: Uninsured or underinsured pregnant women and their families

Service Area/Geographic Focus: Hillsborough County

Bilingual Services: Yes

Funding Amount: \$872,829

Contact Information:

Address: 4321 North MacDill Avenue
Suite 205
Tampa, FL 33607

Phone: (813) 356-7711

Website: www.baycare.org

Social Media: Facebook – St Josephs Womens Hospital
X – @Baycare
Instagram – @Baycare

Subcontracts: None

Supporting Motherhood and More**Program Description**

Supporting Motherhood and More is an individualized, live telehealth counseling program offered for women (pregnant and postpartum up to two years) who may be experiencing perinatal depression or other mood disorders associated with pregnancy and/or birth. Support groups are led by a clinical social worker.

Target Population Served: Uninsured or underinsured pregnant and postpartum women

Service Area/Geographic Focus: Hillsborough County

Bilingual Services: Telephonic interpreter available if needed

Funding Amount: \$202,659

Contact Information:

Address: 3030 West Dr. Martin Luther King Jr. Boulevard
Suite 404
Tampa, FL 33607

Phone: (813) 872-3925

Website: www.baycare.org/hospitals/st.josephs-womens-hospital/patients-and-visitor

Social Media: Facebook – St Josephs Womens Hospital
X – @Baycare
Instagram – @Baycare

Subcontracts: None

Garden and Art Wellness Program

Program Description

The Garden and Art Wellness (GAW) program uses the arts and mindfulness practices to help support students in their academics and self-esteem development as well as provide their parents/caregivers with community resources and practical applications. GAW activities include mindfulness and exercise in the garden, garden lessons and garden art and reflection activities. The art activities used help students to start to build up their self-esteem by providing the space for self-expression and reflection. For the parents/caregivers, GAW hosts monthly “Family Garden Club” meetings that include family bonding activities as well as presentation about healthy eating, nutrition, and gardening as well as community resources.

Target Population Served: Children in grades kindergarten to fifth grade

Service Area/Geographic Focus: Students and their parent/guardian or caregiver that lives in, near, and/or attend school in either the Tampa Heights or Highland Pines area

Bilingual Services: No

Funding Amount: \$123,344

Contact Information:

Address: 2005 North Lamar Avenue
Tampa, FL 33602

Phone: (813) 468-3608

Website: www.thjca.org

Social Media: Facebook – Tampa Heights Junior Civic Association
Instagram – @thjca
LinkedIn – Tampa Heights Junior Civic Association

Subcontracts: None



Kiwanis StoryWalk

Program Description

Kiwanis StoryWalk® is an initiative from The Kiwanis Club of Tampa to encourage literacy and exercise for children. Kiwanis StoryWalk® displays a storybook along a walking path page-by-page. In order to read the story, families will walk the path and read along.

Target Population Served: Parents with Children under seven years of age

Service Area/Geographic Focus: Carrollwood Village Park, Rowlett Park, Seffner Comm”UNITY” Park & Garden, and Ruskin Park & Recreational Center

Bilingual Services: Yes – Spanish

Funding Amount: \$47,965

Contact Information:

Address: 4909 Cresthill Drive
Tampa, FL 33615

Phone: (813) 402-8074

Website: www.tampakiwanis.org/storywalk

Social Media: Facebook – Kiwanis Club of Tampa
X – @TampaKiwanis
Instagram – @TampaKiwanis

Subcontracts: None

Operation Strong Families**Program Description**

Operations Strong Families is a 10-week targeted program designed for active duty and veteran families. Our goal is to make the Tampa YMCA a local destination where these families can grow in health, connectedness, and mental wellness. The program also includes Operation Hero which is an enrichment program designed to address issues faced by many of our military youth. The program is for children who experience academic difficulties and children who demonstrate difficulty dealing with emotions or other barriers. Membership at the YMCA is not required.

Target Population Served: Military and veteran families with children in 3rd through 6th grades

Service Area/Geographic Focus: Offered at four Tampa YMCA Family Centers, including those near Hillsborough County Public School's Purple Star Schools (South Tampa Family YMCA and Spurlino Family YMCA), and in northern and eastern Hillsborough County (Northwest Hillsborough Family YMCA and North Brandon Family YMCA).

Bilingual Services: No

Funding Amount: \$164,145

Contact Information:

Address: 110 East Oak Avenue
Tampa, FL 33602

Phone: (813) 224-9622 ext.1723

Website: www.tampaymca.org/programs/health-fitness

Social Media: None

Subcontracts: None

Sulphur Springs YMCA Out of School Time

Program Description

The Sulphur Springs YMCA Out of School Time is an after school and summer program to support children in reaching their academic milestones through participation in literacy programs, Science, Technology, Engineering, and Math (STEM) activities, and enrichment clubs.

Target Population Served: Kindergarten through 8th grade

Service Area/Geographic Focus: Sulphur Springs K-8 Community School

Bilingual Services: Yes – Spanish

Funding Amount: \$477,261

Contact Information:

Address: 8412 North 13th Street
Tampa, FL 33604

Phone: (813) 224-9622

Website: www.tampaymca.org

Social Media: Facebook – Tampa Metropolitan Area YMCA
X – @TampaYMCA
Instagram – @TampaYMCA

Subcontracts: None



Children's Board Free Family Day**Program Description**

Children's Board Free Family Day provides free administration into the Tampa Museum of Art for children and their parents or caregivers. Free admission will be offered from 11am to 4pm on the following dates: December 14, 2024, February 1, 2025, May 3, 2025, and August 30, 2025. Families will be able to participate in a day of art, creativity, and fun. Enjoy art making projects, music, performances, gallery activities, refreshments, and more, all inspired by the Museum's exhibitions.

Target Population Served: Families with children ages six to fourteen years old

Service Area/Geographic Focus: Hillsborough County

Bilingual Services: Yes – Spanish

Funding Amount: \$57,555

Contact Information:

Address: 120 West Gasparilla Plaza
Tampa, FL 33602

Phone: (813) 274-8130

Website: www.TampaMuseum.org

Social Media: Facebook – Tampa Museum of Art, Inc.
X – @TampaMuseumofArt
Instagram – @TampaMuseumofArt

Subcontracts: None

UNITED FOOD BANK AND SERVICES OF PLANT CITY

F.E.E.D. Food, Educating, Empowerment for Development

Program Description

The F.E.E.D Program, determines immediate need for help for parents/caregivers and makes connections with local resources. The program teaches new health and nutrition facts with short, informative, and fun classes that include nutritional food supplies, books for children, and much more. F.E.E.D coordinates with schools and other organizations to increase parent awareness of supplemental food for families in need.

Target Population Served: Families with children ages six to fourteen

Service Area/Geographic Focus: East Hillsborough County: Brandon (33510, 33511), Dover (33527), Dover/Sydney (33587), Lithia (33547), Plant City (33563, 33564, 33565, 33566, 33567), Riverview (33569, 33578, 33579), Seffner (33584), Thonotosassa (33592), Valrico (33594, 33596), Wimauma (33598)

Bilingual Services: Yes – Spanish

Funding Amount: \$223,849

Contact Information:

Address: 702 East Alsobrook Street
Plant City, FL 33563

Phone: (813) 764-0625 ext. 5

Website: www.ufbpc.org

Social Media: Facebook – United Food Bank and Services
Instagram – @United Food Bank and Services

Subcontracts: None





UNIVERSITY AREA COMMUNITY DEVELOPMENT CORPORATION

Get Moving! Mind, Body, & Soul

Program Description

The Moving program is a comprehensive wellness program that focuses on improving the health and nutrition of University Area residents, while meeting the individual where they are in life. The program strives to create a suitable living environment to promote neighborhood sustainability, by offering organized sports and educational classes. From indoor basketball leagues to swimming and soccer in the community park, all organized sports are available to residents who are learning for the first time, as well as those who have “been doing it for years”.

Target Population Served: Children ages seven to fourteen years old

Service Area/Geographic Focus: North Tampa Area

Bilingual Services: Yes – Spanish

Funding Amount: \$300,701

Contact Information:

Address: 14013 North 22nd Street
Tampa, FL 33613

Phone: (813) 558-1149

Website: www.uacdc.org

Social Media: Facebook: University Area CDC
X: @UnivAreaCDC
Instagram: @UnivAreaCDC

Subcontracts: None



Get Moving! Water Safety

Program Description

Get Moving! Water Safety offers beginner-level swimming lessons at an outdoor pool, with a strong focus on water safety and drowning prevention. Lessons will be tailored for different age groups: infants/toddlers, children ages five to eight, nine to thirteen, and fourteen to eighteen. Each session will combine fundamental swimming skills with critical water safety education. This comprehensive water safety initiative will provide essential knowledge and skills to families and children, significantly reducing the risk of water-related accidents in the community.

Target Population Served: Infants through age eighteen

Service Area/Geographic Focus: Uptown Sky Apartments

Bilingual Services: Yes – Spanish

Funding Amount: To be determined

Contact Information:

Address: 14013 North 22nd Street
Tampa, FL 33613

Phone: (813) 558-5212

Website: www.uacdc.org

Social Media: Facebook – University Area CDC
X – @UnivAreaCDC
Instagram – @univareacdc
LinkedIn – University Area CDC

Subcontracts: None



UNIVERSITY AREA COMMUNITY DEVELOPMENT CORPORATION

STEPS for the University Area

Program Description

STEPS for the University Area is a voluntary self-sufficiency program designed to assist individuals/families in becoming economically independent. With the support of local non-profit, faith-based, and local government agencies, STEPS combines case management, education, job training, and ongoing support to assist individuals/families in improving their lives.

Target Population Served: Low-income families living in University Area

Service Area/Geographic Focus: 33612 and 33613 zip code area

Bilingual Services: Yes – Spanish

Funding Amount: \$478,926

Contact Information:

Address: 14013 North 22nd Street
Tampa, FL 33613

Phone: (813) 558-1149

Website: www.uacdc.org

Social Media: Facebook: University Area CDC
X: @UnivAreaCDC
Instagram: @UnivAreaCDC

Subcontracts: None





UNIVERSITY OF SOUTH FLORIDA BOARD OF TRUSTEES, THE

Helping our Toddlers, Developing our Children's Skills (HOTDOCS) & Developing Our Children's Skills K-5 (DOCS K-5)

Program Description

HOT DOCS & DOCS K-5 are parent training programs that teaches caregivers and professionals how to support the social and emotional functioning of their children and to create a safe home environment. HOT DOCS focuses on the needs of young children birth to five years of age, while DOCS K-5 focuses on children five to twelve years of age. Both six-week programs (two-hour weekly sessions) also teach parents/caregivers how to access corresponding community resources. Classes are held in locations throughout the county and offered on-line.

Target Population Served: Families with children birth through elementary school age

Service Area/Geographic Focus: Hillsborough County

Bilingual Services: Yes – Spanish

Funding Amount: \$441,957

Contact Information:

Address: 13101 North Bruce B. Downs Boulevard
Tampa, FL 33612

Phone: (813) 974-1048

Website: [www.usf.edu/medicine/pediatrics/
child-development/hotdocs](http://www.usf.edu/medicine/pediatrics/child-development/hotdocs)

Social Media: Facebook – DOCS Parents Programs
Instagram – @DOCSparentingprograms
LinkedIn – University Area CDC

Subcontracts: None



Hillsborough HIPPY Parent Involvement Project

Program Description

The Hillsborough Home Instruction for Parents of Preschool Youngsters (HIPPY) Parent Involvement Project trains parents and caregivers to prepare their young children for early success in school through an evidence-based school readiness curriculum. HIPPY provides weekly in home visits where parents and caregivers are coached in age appropriate activities, developmental screenings, monthly family education events, and care coordination as needed. The program works with the Center for Autistic and Related Disorders (CARD) to support families with children on the Autism Spectrum.

Target Population Served: Family Child Care Homes and parents and caregivers of children birth to five years of age

Service Area/Geographic Focus: Hillsborough County

Bilingual Services: Yes – Spanish

Funding Amount: \$1,823,437

Contact Information:

Address: 13301 North Bruce B. Downs Boulevard
MHC #2113A
Tampa, FL 33612

Phone: (813) 974-1048

Website: www.floridahippy.fmhi.usf.edu

Social Media: Facebook – Hillsborough HIPPY Parent Involvement Program

Subcontracts: Crisis Center of Tampa Bay

Program-Wide Positive Behavior Support (PWPBS)

Program Description

Program-Wide Positive Behavior Support (PWPBS) partners with early childhood centers and family child care homes to support social-emotional development in children. Sites receive training, materials, and educational coaching on how to best support all their children with social-emotional skills, while also reducing challenging behavior. Monthly training is also available and open to early childhood educators at locations throughout Hillsborough County.

Target Population Served: Early education providers (center-based and family child care homes), administrators, children birth to five years of age and their caregivers/parents

Service Area/Geographic Focus: Hillsborough County

Bilingual Services: Yes – Spanish and Sign Language

Funding Amount: \$988,581

Contact Information:

Address: 13301 North Bruce B. Downs Boulevard
MHC #2113A
Tampa, FL 33612

Phone: (813) 974-1455

Website: www.pwpbs.cbcs.usf.edu

Social Media: Facebook – Program-Wide Positive Behavior Support at USF

Subcontracts: None

Trauma-Informed Schools: Tiered Interventions

Program Description

The program provides students, all school faculty, and staff with Effinity Educator Resilience training, mindfulness coaching, and Child-Adult Relationship (CARE) training. Services include CARE coach training, small group skill building to the students, and individualized teacher coaching in the classroom.

Target Population Served: Children enrolled in Kindergarten through 8th grade

Service Area/Geographic Focus: Children enrolled in Frost Elementary and Giunta Middle School

Bilingual Services: Yes – Spanish

Funding Amount: \$1,103,906

Contact Information:

Address: 13101 North Bruce B. Downs Boulevard
Tampa, FL 33612

Email: traumainformedschools@usf.edu

Social Media: None

Subcontracts: None



1002 East Palm Avenue • Tampa, FL 33605 • (813) 229-2884