



Children's Board  
HILLSBOROUGH COUNTY

[www.ChildrensBoard.org](http://www.ChildrensBoard.org)

# Strategic Planning Workshop

April 24, 2025

# Agenda

1:00 – 1:15 pm	Introductions and Objective
1:15 – 1:25 pm	Public Comment
1:25 – 1:35 pm	Strategic Plan History - Timeline Review
1:35 – 1:45 pm	CBHC Funding Data
1:45 – 2:05 pm	CBHC Outcome Data
2:05 – 2:25 pm	Community Data
2:25 – 2:35 pm	Break
2:35 – 2:50 pm	Community Responses
2:50 – 3:05 pm	2025 Legislative Update
3:05 – 3:45 pm	Strategic Planning Discussion & Dot Exercise
3:45 – 4:00 pm	Wrap Up and Next Steps

The background of the slide is a white surface covered with numerous colorful handprints. The handprints are in various colors including red, blue, green, orange, purple, and pink. Some handprints are complete, while others are just fingers or partial prints, scattered across the entire area.

# Timeline Review



# Timeline Milestones

**1988**

Children's Board of Hillsborough County (CBHC) was created by voters.

**1990**

The Hillsborough County Needs Assessment (HCNA) was completed. Thirteen issue/need areas were identified.

**1991**

CBHC released approximately \$3 million in funding for the first time based on Thirteen need/issue areas from the HCNA.

**1999**

CBHC refocused approximately \$13 million in funding on Primary Prevention and Early Intervention outcomes.

**2002**

Released 10-year 2012 Strategic Plan. CBHC focused approximately \$29 million to target school readiness for children birth to age eight.

**2003**

CBHC introduced Empowerment Evaluation to funded providers to measure outcomes in partnership. Administrative Services Organization (ASO) was implemented.

**2005**

All \$33 million in funded programs were rated for alignment with strategic plan criteria: Age Focus, Outcomes, Measurable Indicators, and Geographic Focus.

**2006**

Annual Business Plan Competition was implemented to assist non-profit agencies in developing social enterprise ventures.

**2007**

ASO functions were transitioned in-house.

**2011**

The 2012-2016 Strategic Plan was released with the goal that all children in Hillsborough County Succeed by Third Grade. Results-Based Accountability™ framework was adopted for measuring CBHC impact.



# Timeline Milestones

**2012**

Reduced property tax and funding base created need to focus funding even more towards Evidenced-Based Models and Practices. CBHC released \$20 million through a competitive process targeting four result areas.

**2013**

CBHC Funding Platforms were developed and shared with the community to reflect strategic investments.

**2014**

Initiated Child Safety Summit and Prevent Needless Deaths campaign.

**2016**

The Children's Board Analytical Tracking System (CATS) was launched for participant data collection.

**2017**

CBHC released over \$10 million for Uniting and Leading grants through a competitive process with a focus on pregnant women and their children birth to eight years of age.

**2019**

Launched a Summer Passport Program, for families who participate in Family Resource Center activities to register their child for a week of camp.

**2020**

Expanded to seven Centers with the opening of the Doretha Wynn Edgecomb Children's Board Family Resource Center in Temple Terrace.

**2021**

The Board created ONEhillsborough/Strategic Initiatives in 33610, 33619, and 33603.

**2023**

The Children's Board hosted Town Hall meetings throughout the county.

**2024**

CBHC released largest Investment Grant to date of \$32.5 million.

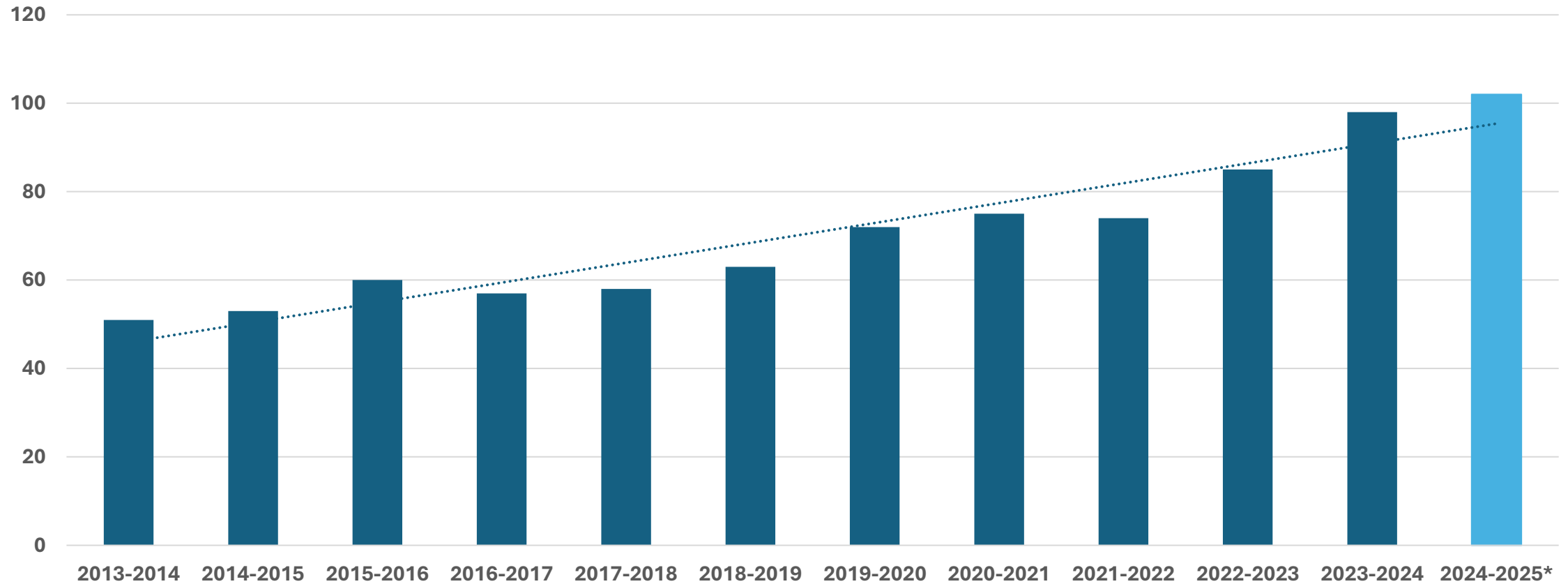
The background of the slide is a white textured surface covered with numerous handprints of various colors including red, blue, green, orange, purple, and pink. The handprints are of different sizes and orientations, creating a vibrant and diverse pattern.

# CBHC Funding Data

# 10 Year Program Growth

## CBHC - Number of Continuation Contracts

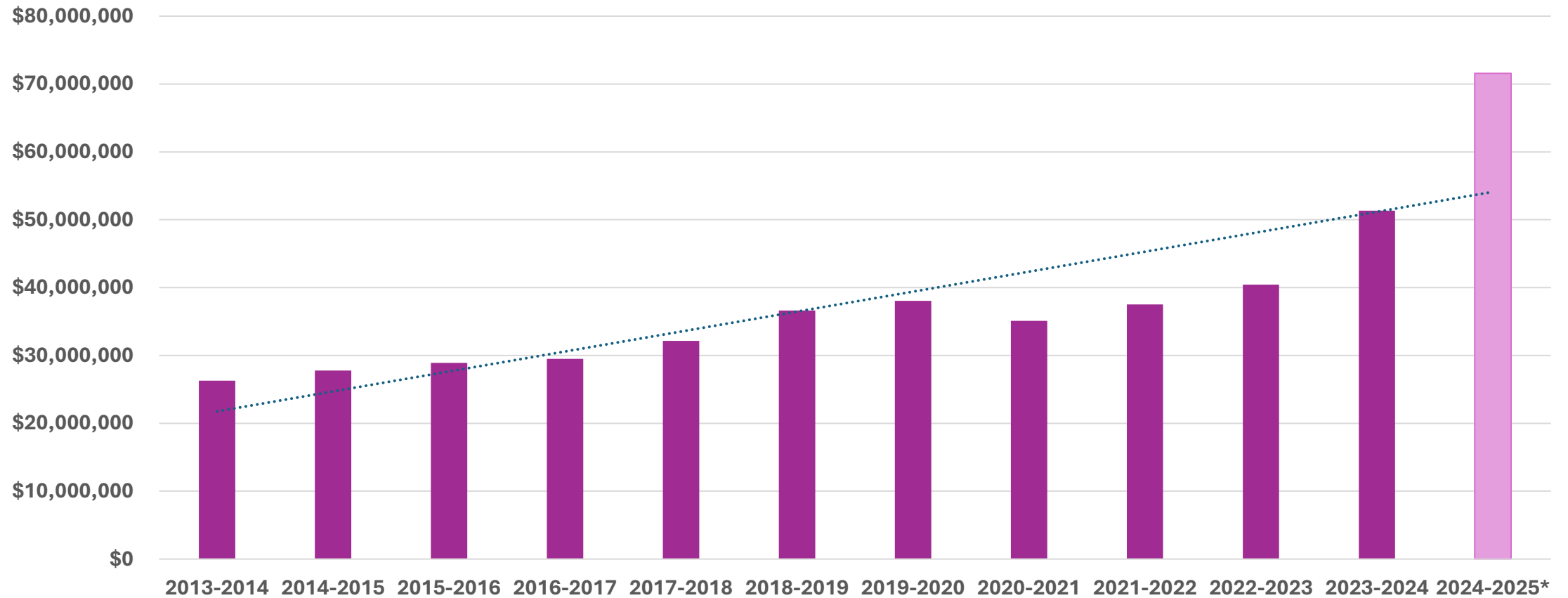
*\*FY2024-2025 partial year as of 4-8-2025*



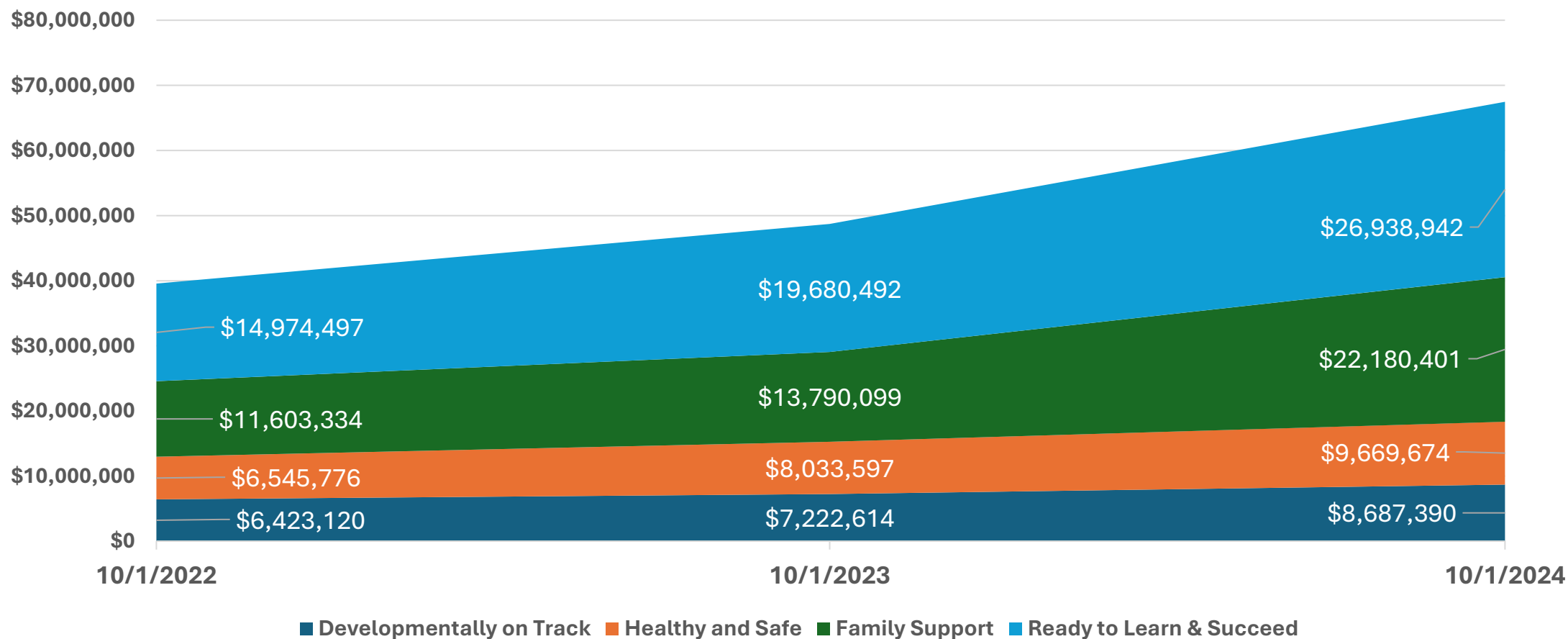
# 10 Year Program Growth

**CBHC Total Program Funding (up to amount) approved by Board**

*FY2024-2025 partial year as of 4-8-2025*

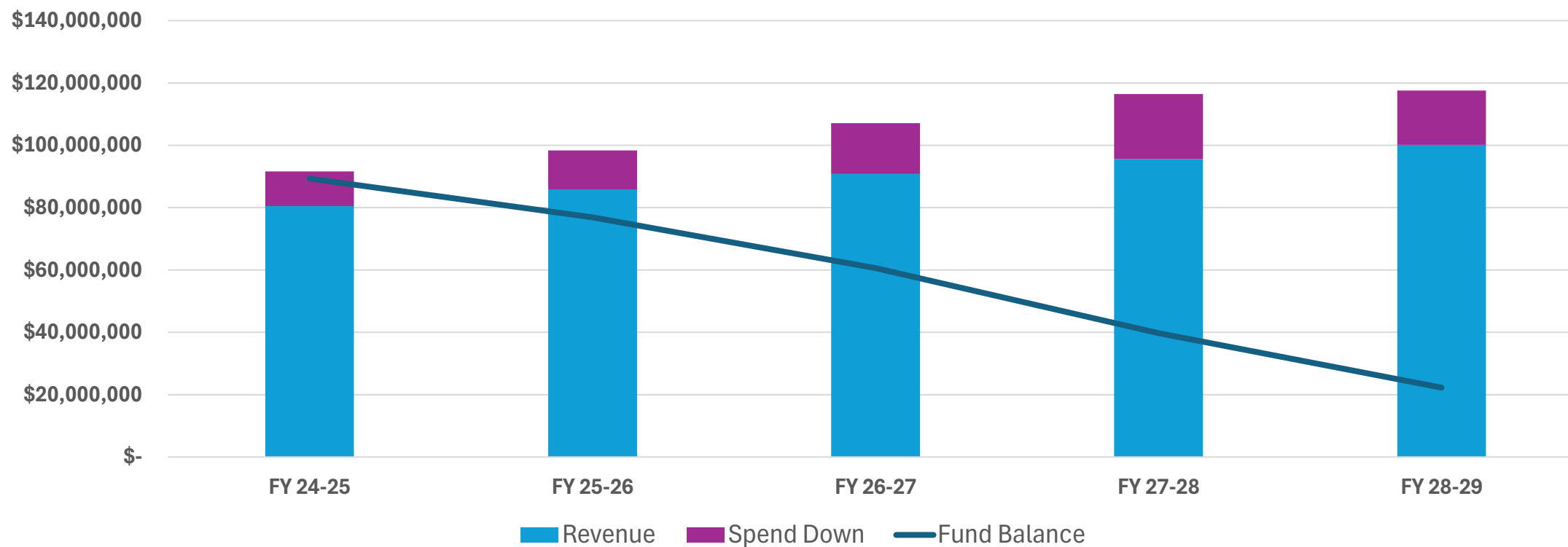


# Funding by Focus Area



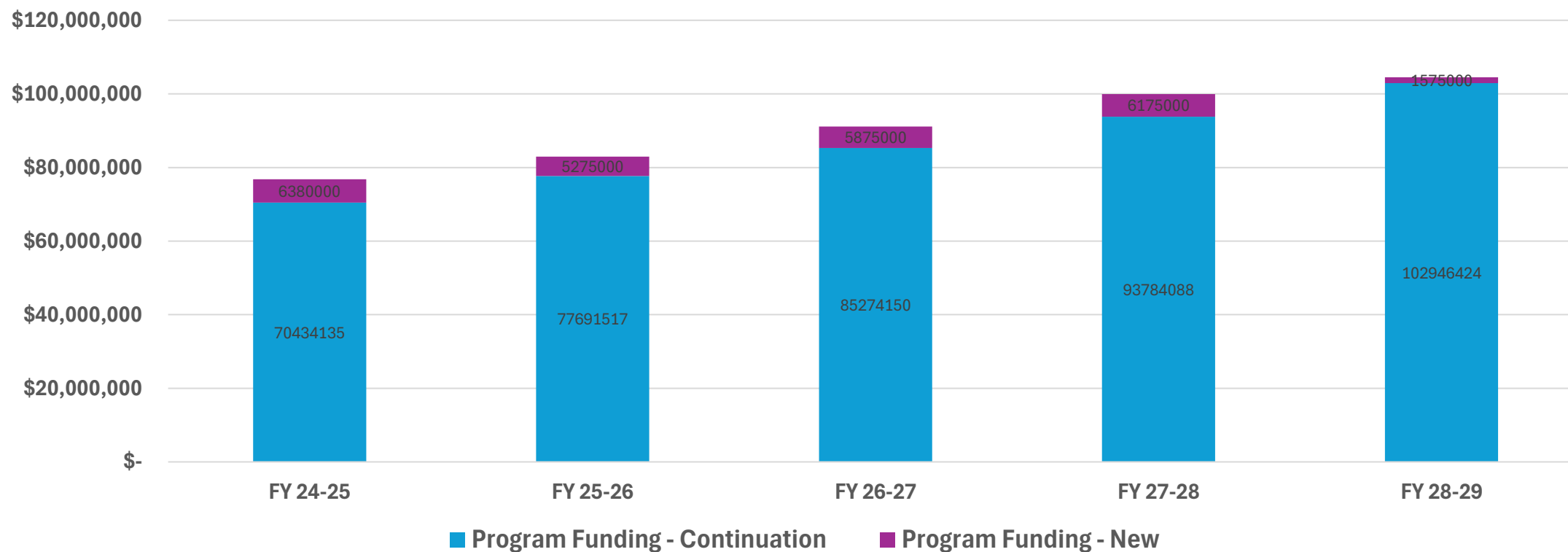
# 5 Year Projections

CBHC 5-Year Projections  
*(subject to change)*

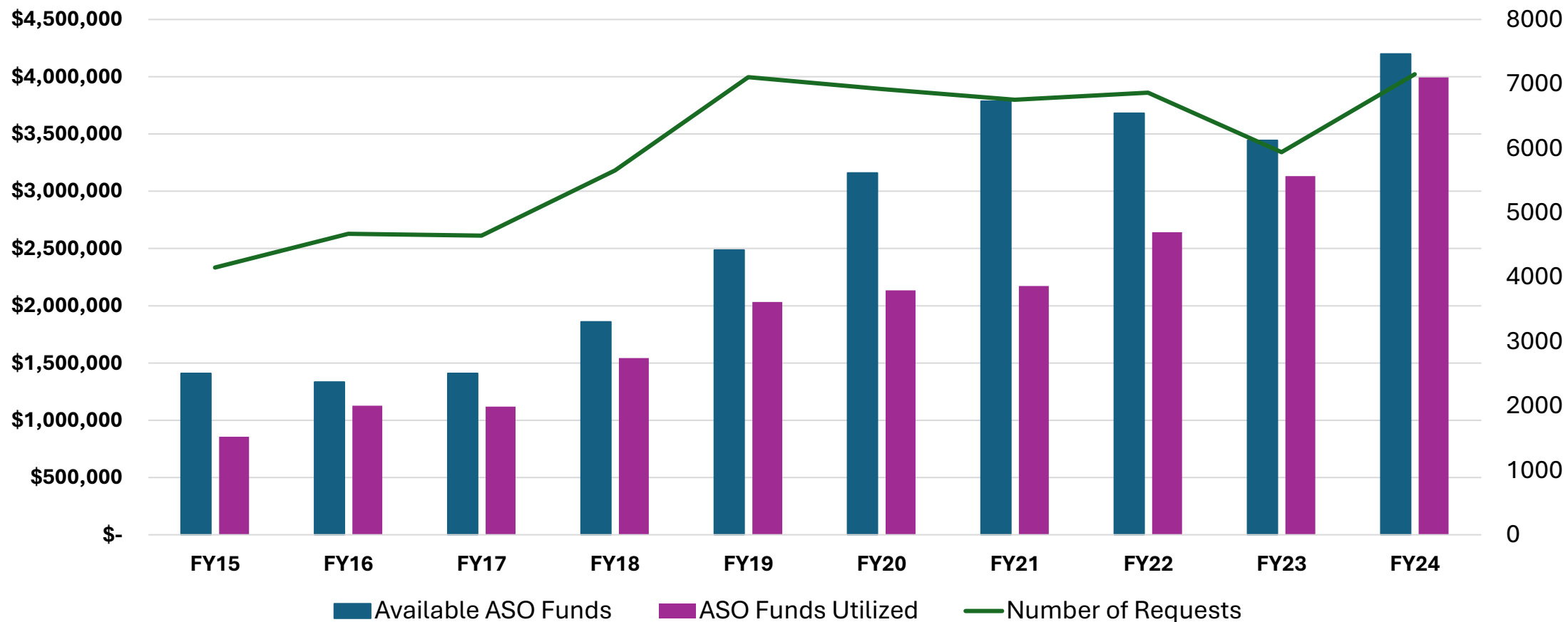


# 5 Year Projections

**CBHC 5-Year Projections - Program Funding**  
*(Subject to Change)*



# 10 Year ASO Growth



The background of the image is a white surface covered with numerous handprints of various colors, including red, blue, green, orange, purple, and pink. The handprints are of different sizes and orientations, creating a vibrant and diverse pattern.

# **CBHC Outcome Data**

# What Works

- 84% of 55 outcomes achieved (reference Annual Report)
- Increased participants in CATS – 52,659 in FY24, an increase of 11,343 from FY23
  - 4,349 families served with ASO funds
- Family Support – All 12 outcomes consistently met in 2023 and 2024 particularly in:
  - Concrete Supports
  - Social Supports
  - Community Resources
- Increased provider capacity and expansion of programs
- Increased collaboration with system partners



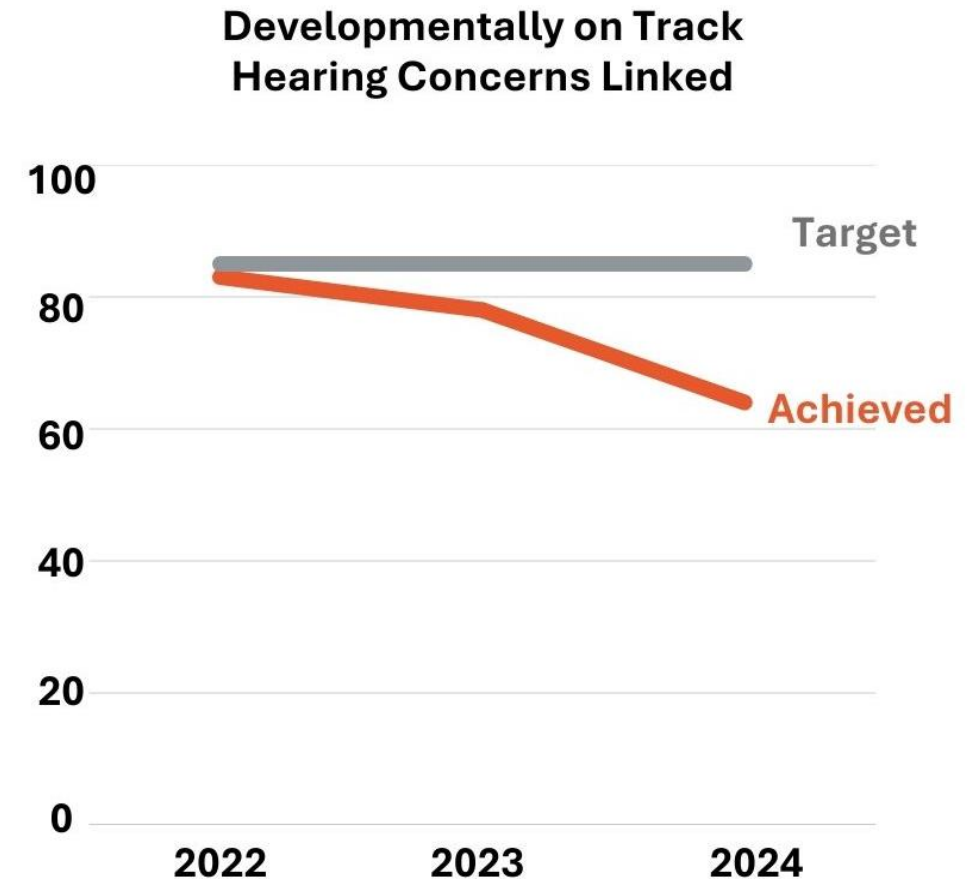
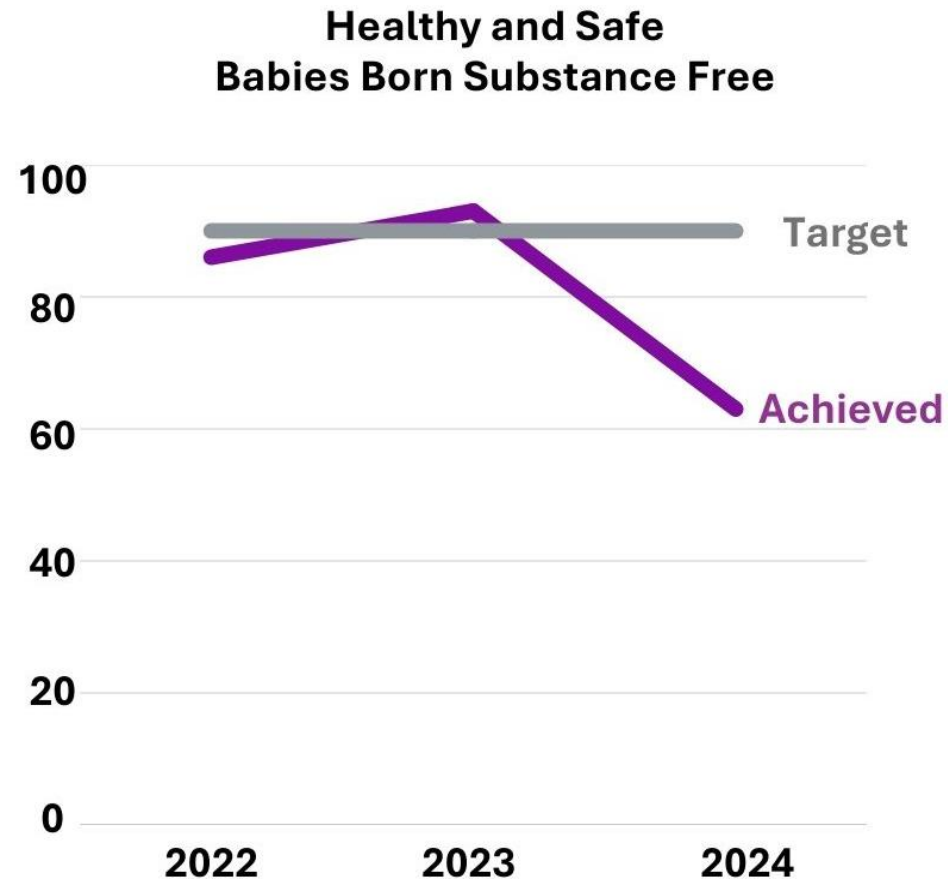
Children's Board  
HILLSBOROUGH COUNTY

[www.ChildrensBoard.org](http://www.ChildrensBoard.org)

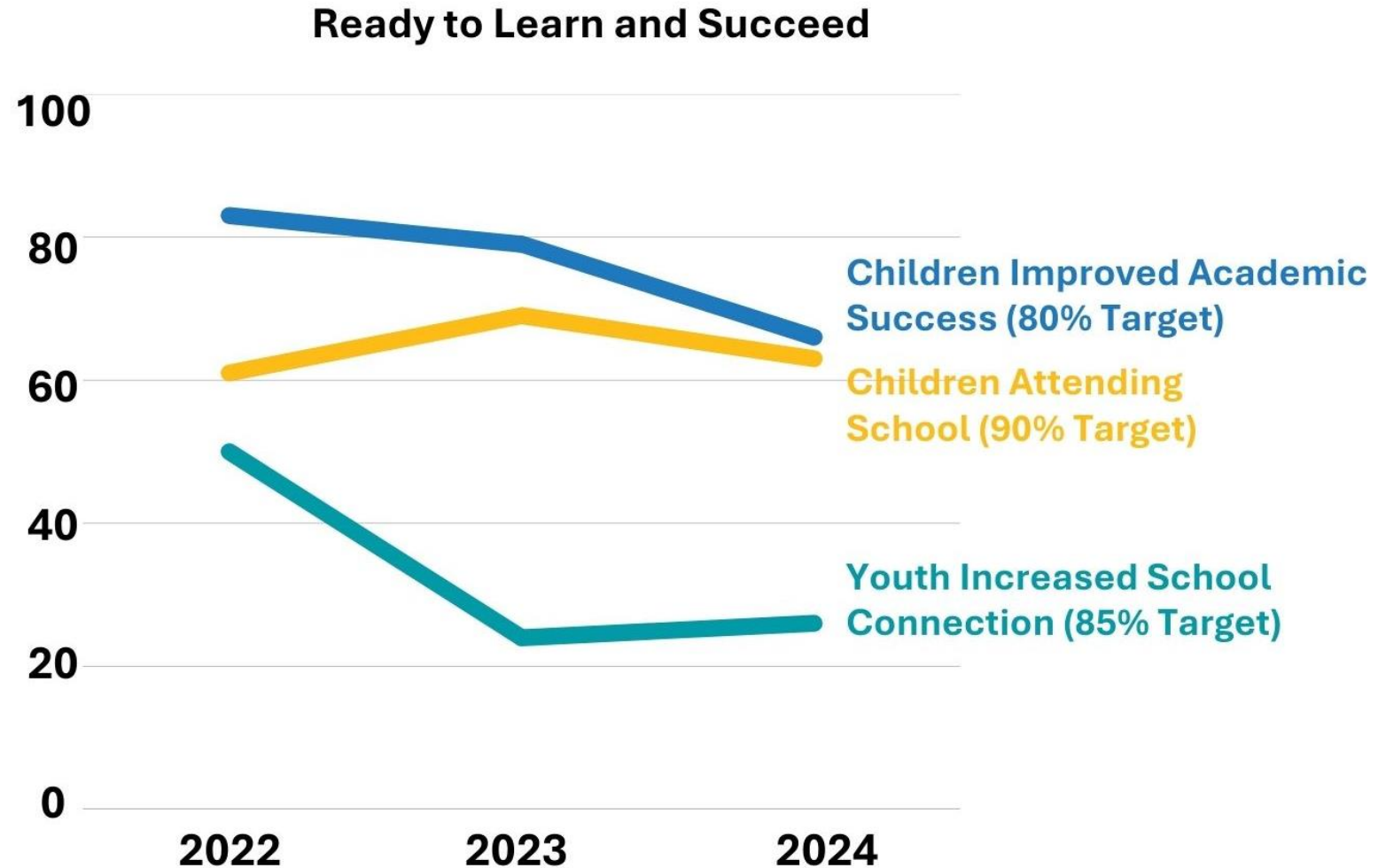
## 3-Year Trends – Turn the Curve

Outcomes	Bench mark	Participants Measured	2022	Participants Measured	2023	Participants Measured	2024	2024 Programs
			% Met		% Met		% Met	
Youth with Increased School Connection	85%	200	50%	120	24%	96	26%	1
Babies Born Substance Free	90%	21	86%	15	93%	8	63%	1
Children Regularly Attending School	90%	161	61%	199	69%	203	63%	3
Children with Hearing Concerns Linked	85%	90	83%	49	78%	36	64%	2
Children with Improved Progress Toward Academic Success	80%	480	83%	601	79%	588	66%	10
Outcomes Met within 10%								
Children with Improved Physical Fitness	80%	200	89%	82	83%	178	75%	2
Children at Reduced Risk of Unintentional Injury	85%	3049	72%	3098	76%	4456	78%	11
Children with Vision Concerns Linked	85%	425	70%	680	76%	851	78%	2

# 3-Year Outcome Trends



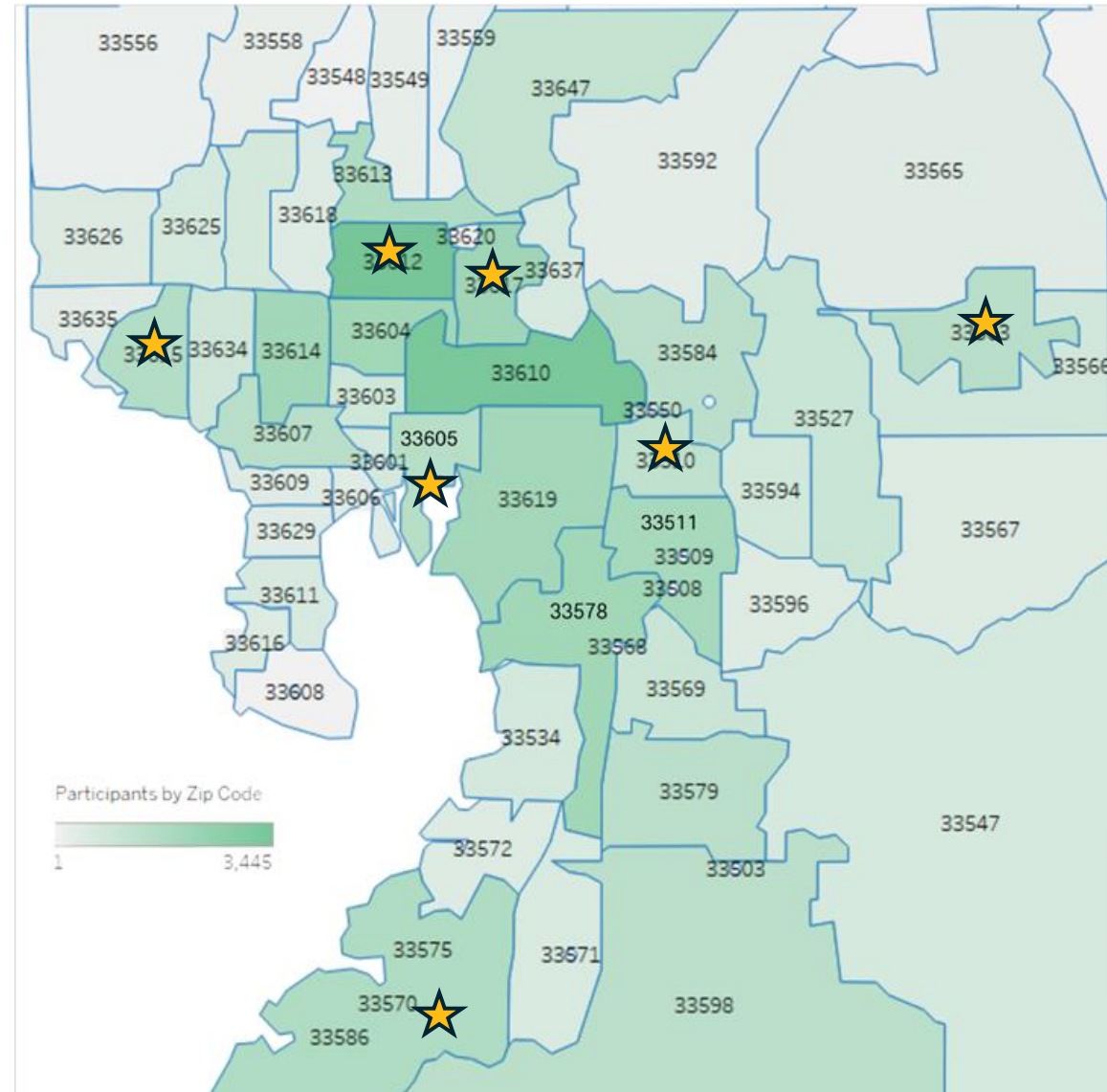
# 3-Year Outcome Trends



# Participant Map 2024

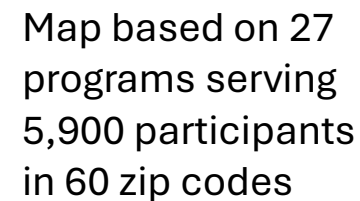
- Map based on 52,659 children and their families
- 87 zip codes in Hillsborough County
- Most frequently reported zip codes
  - 33612
  - 33610
  - 33617
  - 33604
  - 33578

★ 7 Children's Board Family Resource Center locations



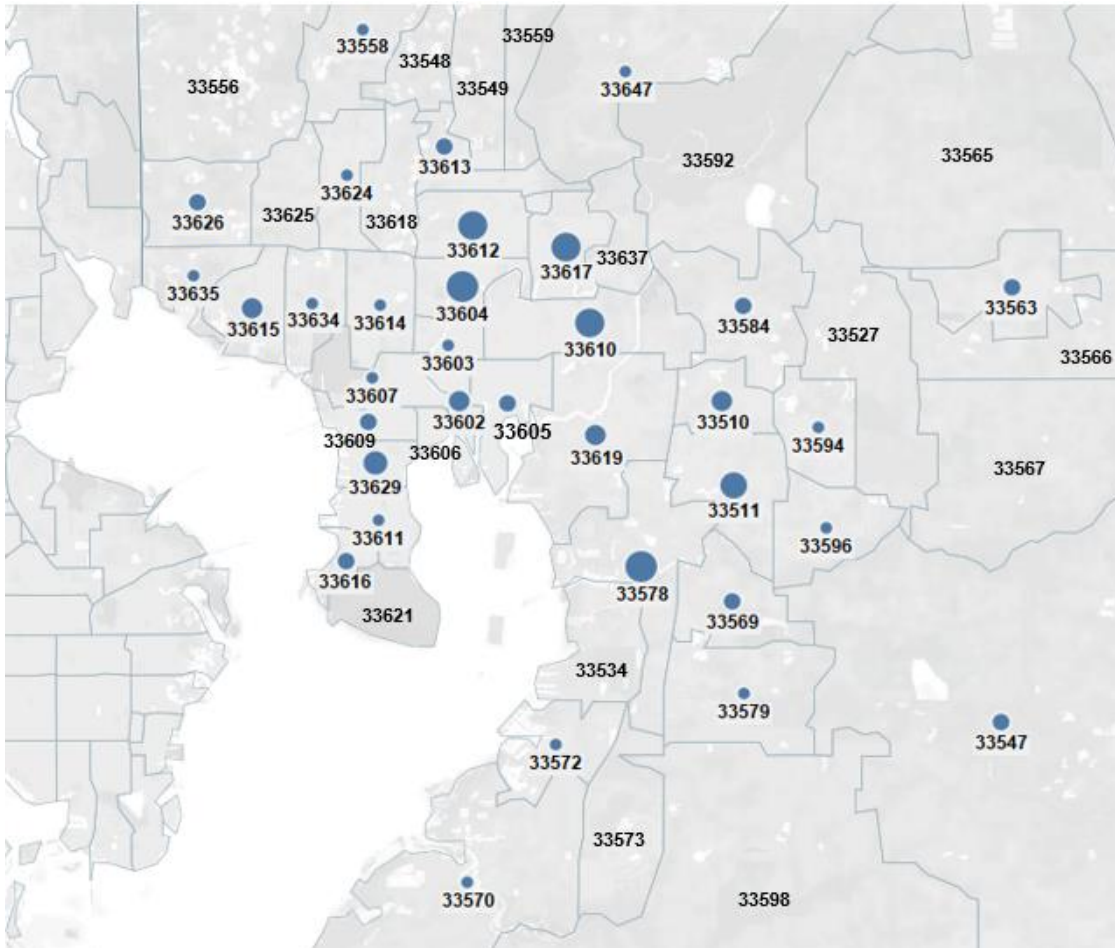


## Participants Served in FY24



# Services in Early Education Centers

Hillsborough County School Readiness Zip Codes  
with CBHC Funded Services



309 Hillsborough County Child Care Centers

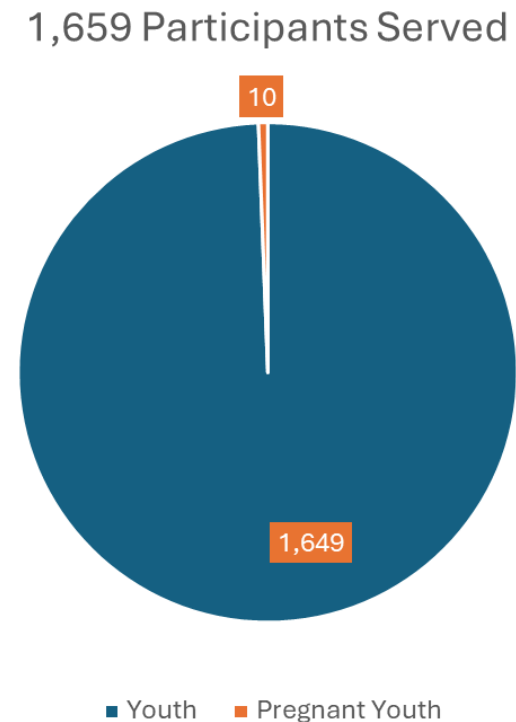
- All receive School Readiness (some provide VPK)
- 93 receive CBHC funded program services
- 14 received services from two or more Providers
- Three CBHC Providers serve children, parents/caregivers and center staff with training, coaching, early intervention, assessments, referrals, and technical assistance.
  - Early Childhood Council
  - Hillsborough Community College Foundation
  - University of South Florida
- Almost 200 centers without CBHC funded services in 16 County neighborhoods, 9 Tampa neighborhoods, Temple Terrace and Plant City
- Removed Centers at YMCA, Boys and Girls Clubs, Schools and RCMA

*Adapted from Early Learning Coalition of Hillsborough County data 2024*

# Middle School Report

## 6th, 7th, & 8th Grade

- 55 zip codes served
- No significant demographic differences
- *Areas least served:*
  - Apollo Beach
  - East of Riverview
  - Town N Country
  - Brandon (33510)
  - Lutz
  - South Tampa



# Middle School Report

## Healthy and Safe

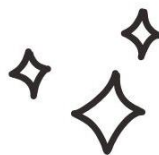


*\*Outcomes with less than 10 participants are not shown to maintain confidentiality.*

9 Funded programs  
contributed to results

680 participants measured

There were six outcomes under the Children are Healthy and Safe focus area with performance results for the 6th - 8th grade participants. **Four of these outcomes exceeded** the expected performance benchmark targets (**starred results**). There were two additional outcomes in this focus area measured for the teen parents (routine prenatal care and reduced symptoms of depression but results are not shown).



## Developmentally on Track



*\*Outcomes with less than 10 participants are not shown to maintain confidentiality.*

Middle School participants were measured on three Developmentally on Track focus area outcomes. A total of 61 participants were measured and 89% of them were **successfully linked to a medical provider** when vision concerns were identified at vision screenings. These results **exceeded the 85% benchmark**. Results for Hearing Concerns Linked to a Medical Provider and Parents Demonstrating Behavior Consistent with Age-Appropriate Development, are not shown.

# Middle School Report

## Family Support



*\*Outcomes with less than 10 participants are not shown to maintain confidentiality.*

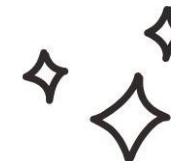
Middle school participants contributed to six Family Support outcomes. Results shown represent 284 participants measured in 13 funded programs. All three outcomes shown **exceeded the benchmark targets**. Results for three parent/caregiver outcomes – Fewer symptoms of depression, Increased knowledge of community resources and Positive parent/child interactions are not shown.

## Ready to Learn and Succeed



There were 9 outcomes in the Ready to Learn and Succeed focus area that 1,295 middle school participants were measured on. Five of these outcomes had participant results that **exceeded the benchmark targets**.

1,295 participants measured



19 Funded programs  
contributed to results

The background of the image is a white surface covered with numerous handprints of various colors, including red, blue, green, orange, purple, and pink. The handprints are of different sizes and orientations, creating a vibrant and diverse pattern.

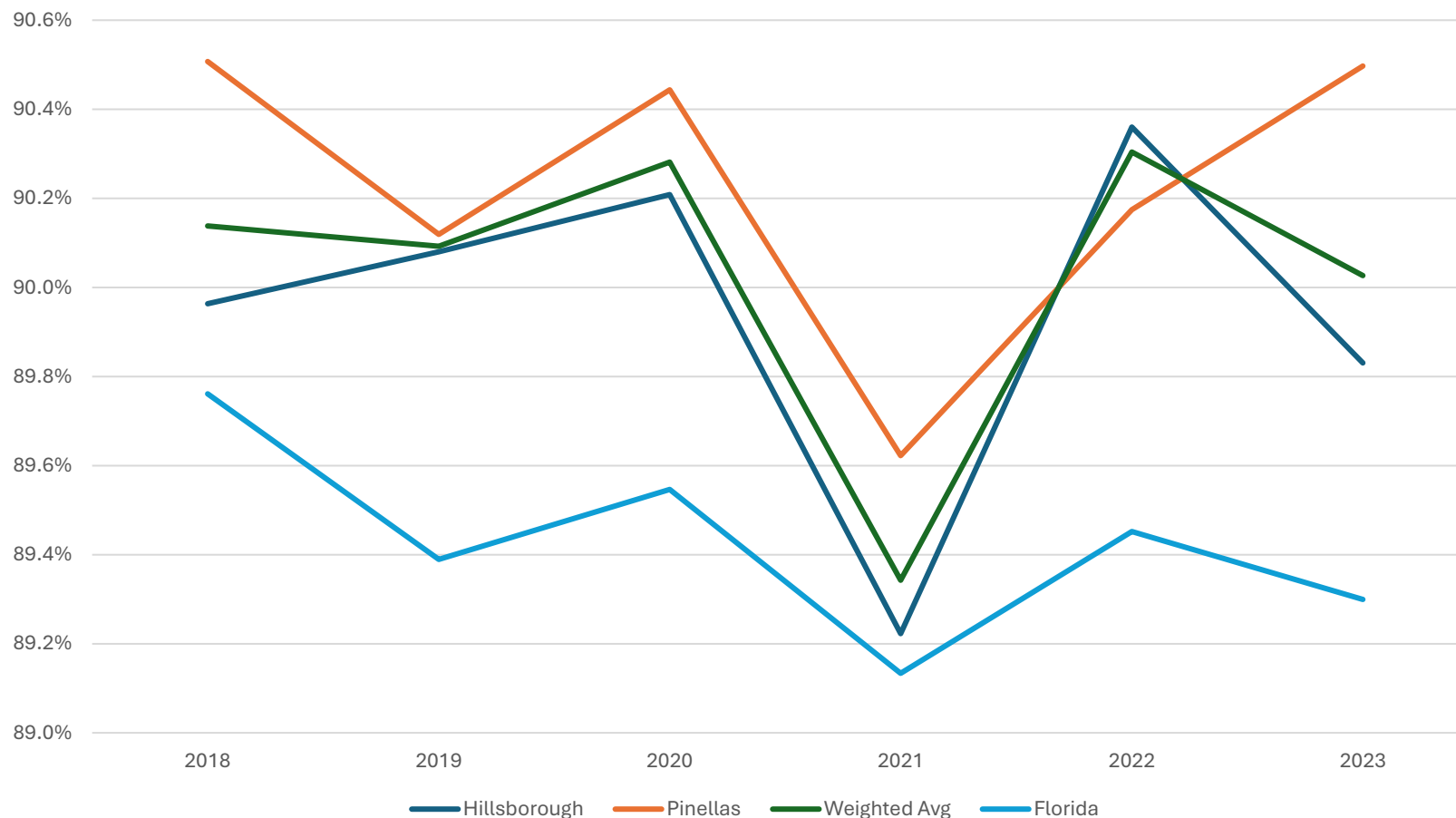
# Community Data

# Healthy Births

Adapted from Thrive by Five presentation



Healthy Births



Healthy Births				
Year	Hillsborough	Pinellas	Weighted Avg	Florida
2018	90.0%	90.5%	90.1%	89.8%
2019	90.1%	90.1%	90.1%	89.4%
2020	90.2%	90.4%	90.3%	89.5%
2021	89.2%	89.6%	89.3%	89.1%
2022	90.4%	90.2%	90.3%	89.5%
2023	89.8%	90.5%	90.0%	89.3%

**Healthy Births:** Number of births that were not pre-term (< 37 complete weeks gestation) as a percentage of live births

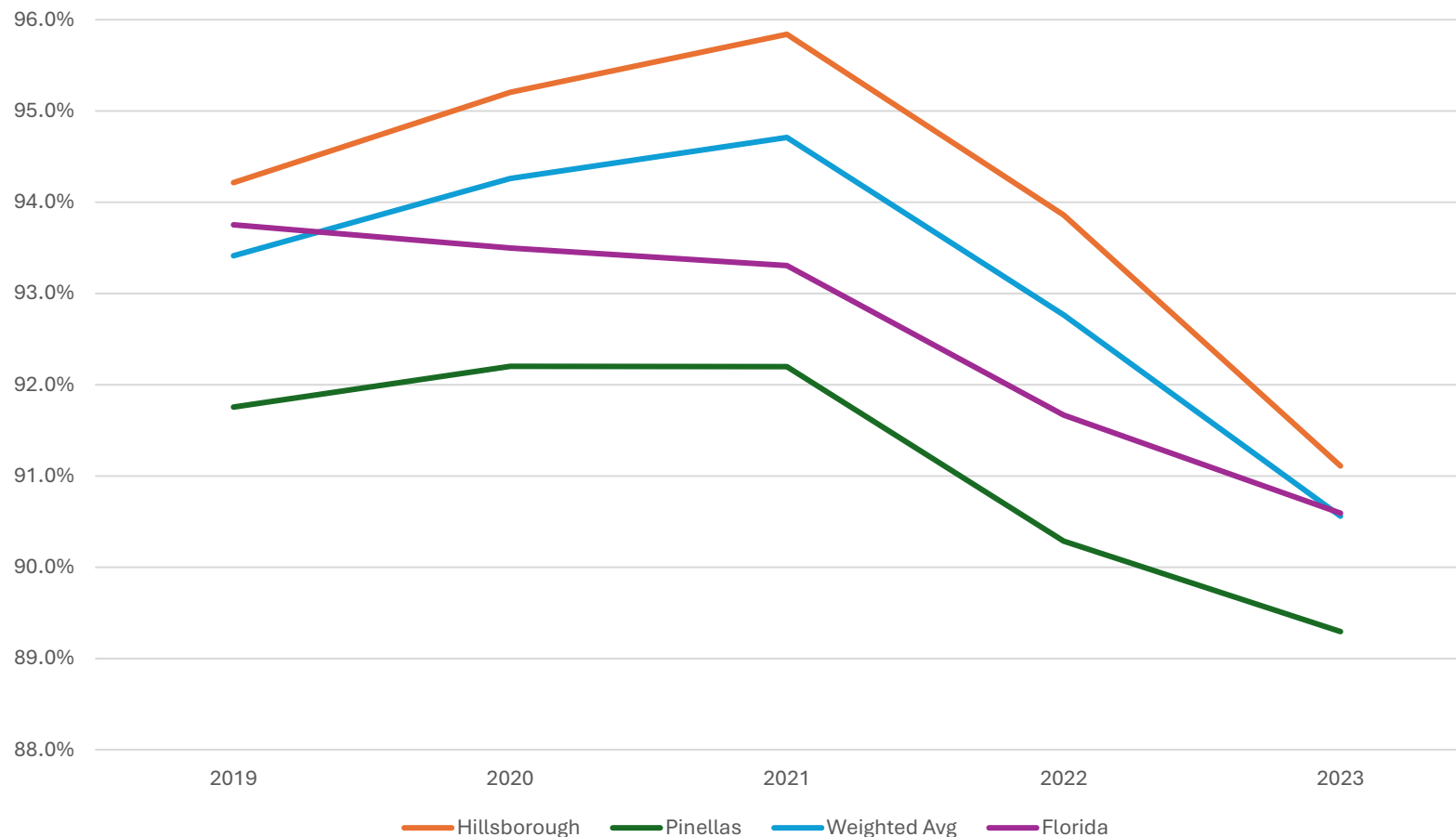
**Source:**

[flhealthcharts.gov/Charts/LoadPage.aspx?l=rdPage.aspx?rdReport=BIRTH.DataViewer&cid=0473](https://flhealthcharts.gov/Charts/LoadPage.aspx?l=rdPage.aspx?rdReport=BIRTH.DataViewer&cid=0473)

# Immunization Rates



Kindergarten Immunization Rates



Immunization Rates Chart Data

Year	Hillsborough	Pinellas	Weighted Avg	Florida
2019	94.2%	91.8%	93.4%	93.8%
2020	95.2%	92.2%	94.3%	93.5%
2021	95.8%	92.2%	94.7%	93.3%
2022	93.9%	90.3%	92.8%	91.7%
2023	91.1%	89.3%	90.6%	90.6%

**Kindergarten Immunization Rates:**  
number of children immunized or exempted from immunization as a percentage of all children enrolled in Kindergarten. Exemptions can include official religious exemption, medical exemption, or modified vaccination schedule

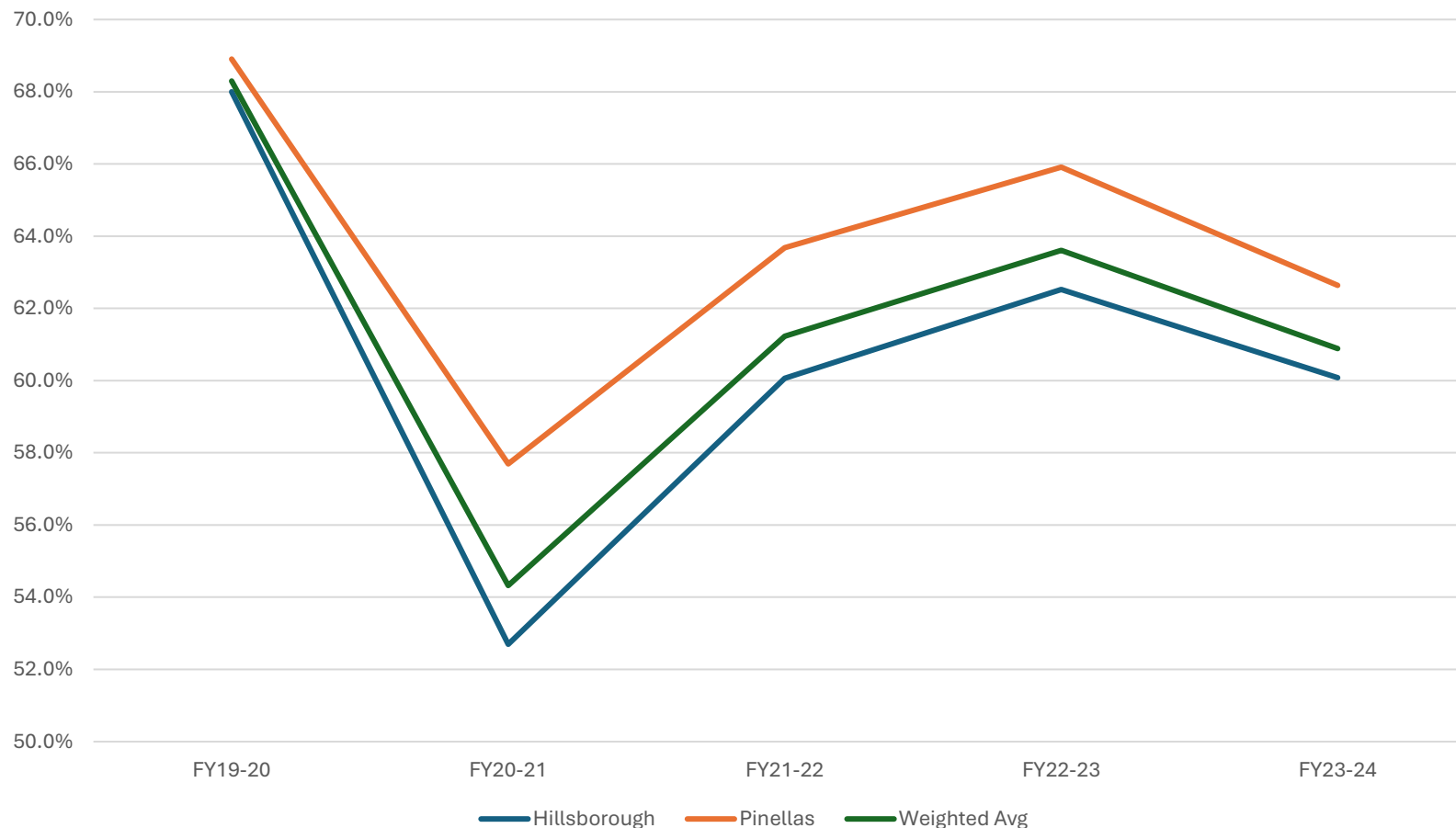
**Source:**

[flhealthcharts.gov/Charts/LoadPage.aspx?l=rdPage.aspx?rdReport=NonVitalIndNoGrp.Dataviewer&cid=0075](https://flhealthcharts.gov/Charts/LoadPage.aspx?l=rdPage.aspx?rdReport=NonVitalIndNoGrp.Dataviewer&cid=0075)

# Voluntary Pre-Kindergarten (VPK) Enrollment



VPK Enrollment



VPK Enrollment Chart Data

Year	Hillsborough	Pinellas	Weighted Avg
FY19-20	68.0%	68.9%	68.3%
FY20-21	52.7%	57.7%	54.3%
FY21-22	60.1%	63.7%	61.2%
FY22-23	62.5%	65.9%	63.6%
FY23-24	60.1%	62.6%	60.9%

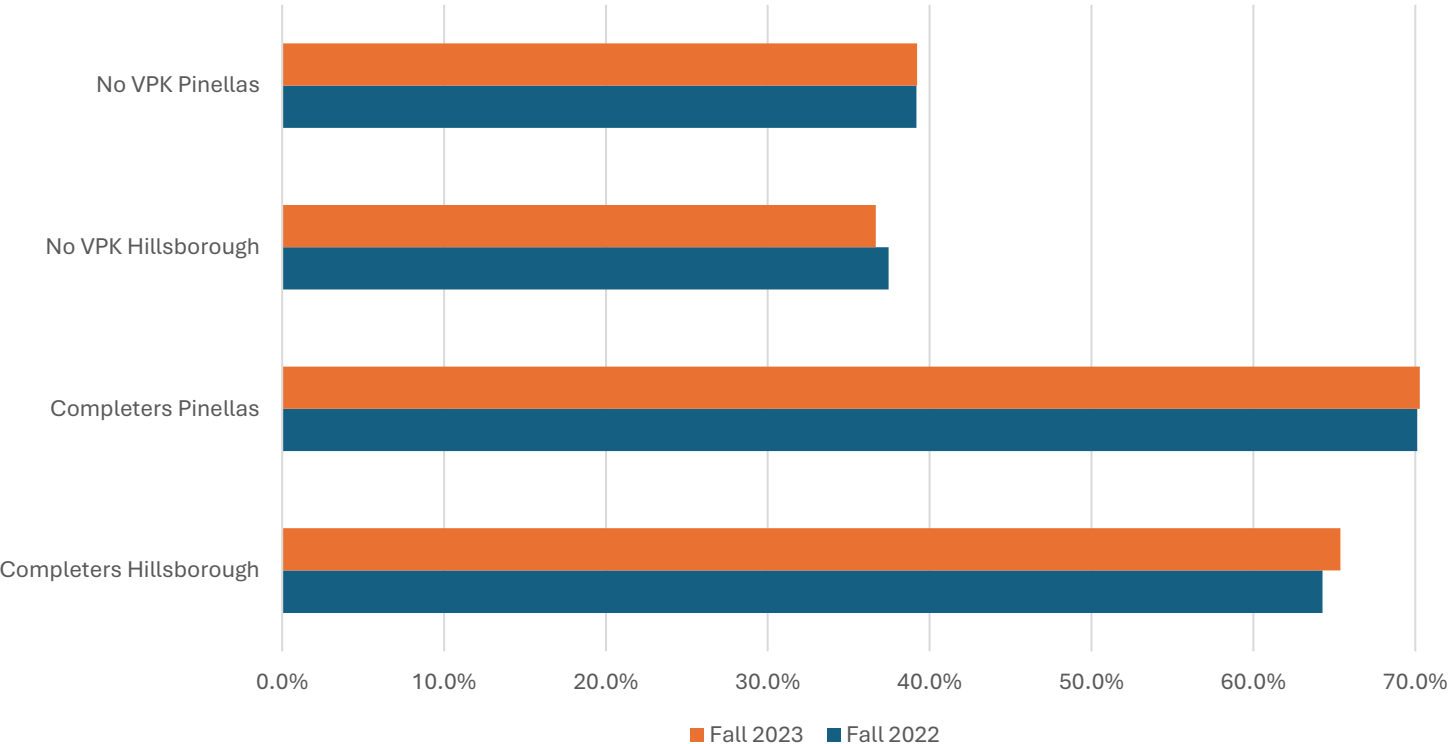
**VPK Enrollment:** number of children participating in VPK programs (unduplicated enrollments) as a percentage of the estimated four-year-old population

**Source:** Early Learning Coalitions of Hillsborough and Pinellas Counties for enrollment and EDR (Office of Economic and Demographic Research) for estimated population <https://edr.state.fl.us/Content/conferences/vpk/index.cfm>

# Kindergarten Readiness: No VPK vs. VPK Completers



Kindergarten Readiness  
No VPK vs. VPK Completers



Kindergarten Readiness: VPK Completers vs. No VPK				
	Completers Hillsborough	Completers Pinellas	No VPK Hillsborough	No VPK Pinellas
Fall 2022	64.3%	70.1%	37.5%	39.2%
Fall 2023	65.4%	70.3%	36.7%	39.2%

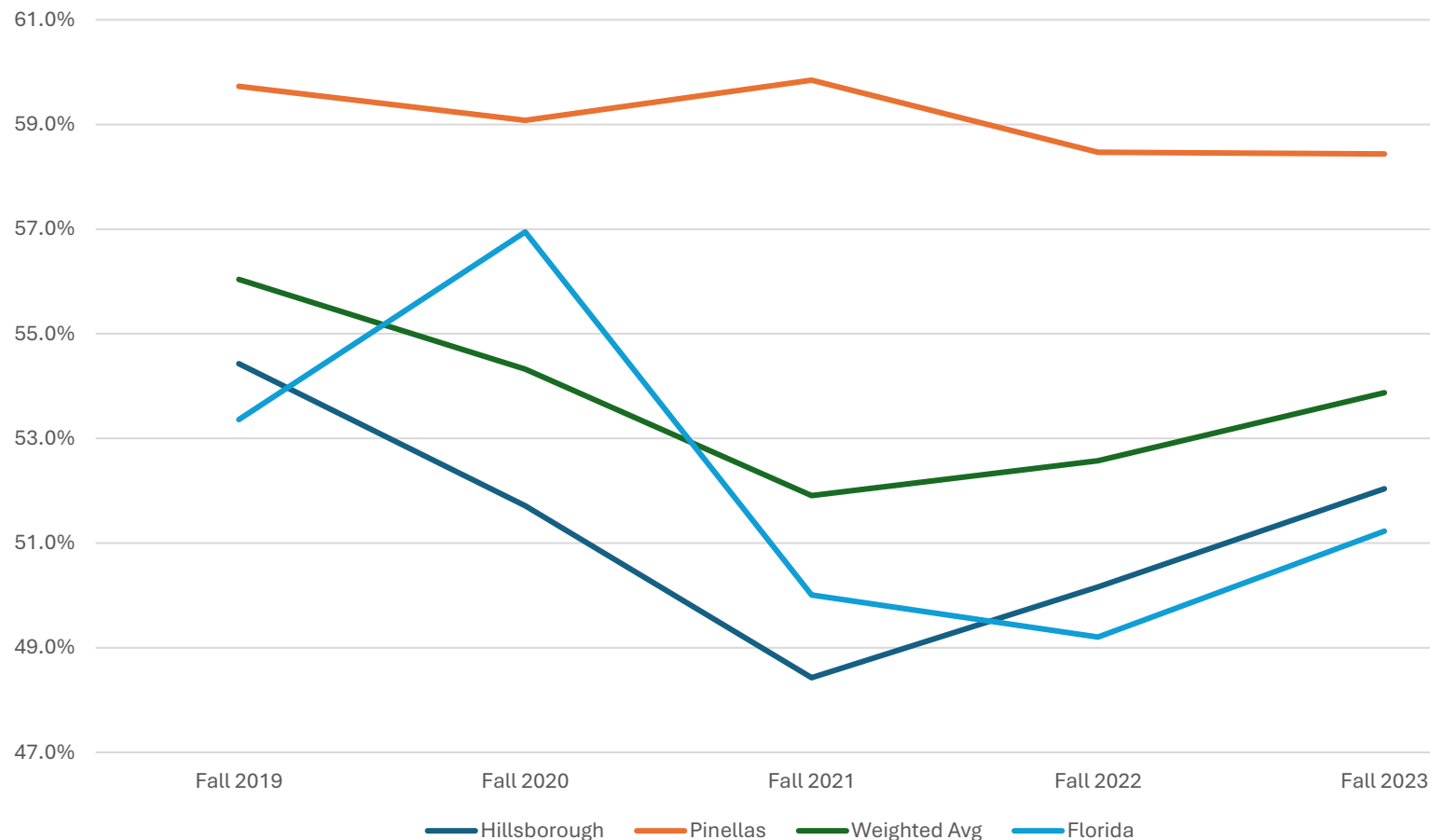
**Kindergarten Readiness:** the percentage of children who completed VPK (attended 70% or more of VPK program hours) and are "ready" at Kindergarten entry (Scoring 690+ on FAST Star Early Literacy Assessment) vs. the percentage of children who did not attend VPK or are unmatched to a VPK record

**Source:** Florida Dept. of Education  
<https://www.fldoe.org/accountability/assessments/k-12-student-assessment/best/k-ready.stml>

# Kindergarten Readiness



Kindergarten Readiness



Kindergarten Readiness Chart Data				
Year	Hillsborough	Pinellas	Weighted Avg	Florida
Fall 2019	54.4%	59.7%	56.0%	53.4%
Fall 2020	51.7%	59.1%	54.3%	56.9%
Fall 2021	48.4%	59.8%	51.9%	50.0%
Fall 2022	50.2%	58.5%	52.6%	49.2%
Fall 2023	52.0%	58.4%	53.9%	51.2%

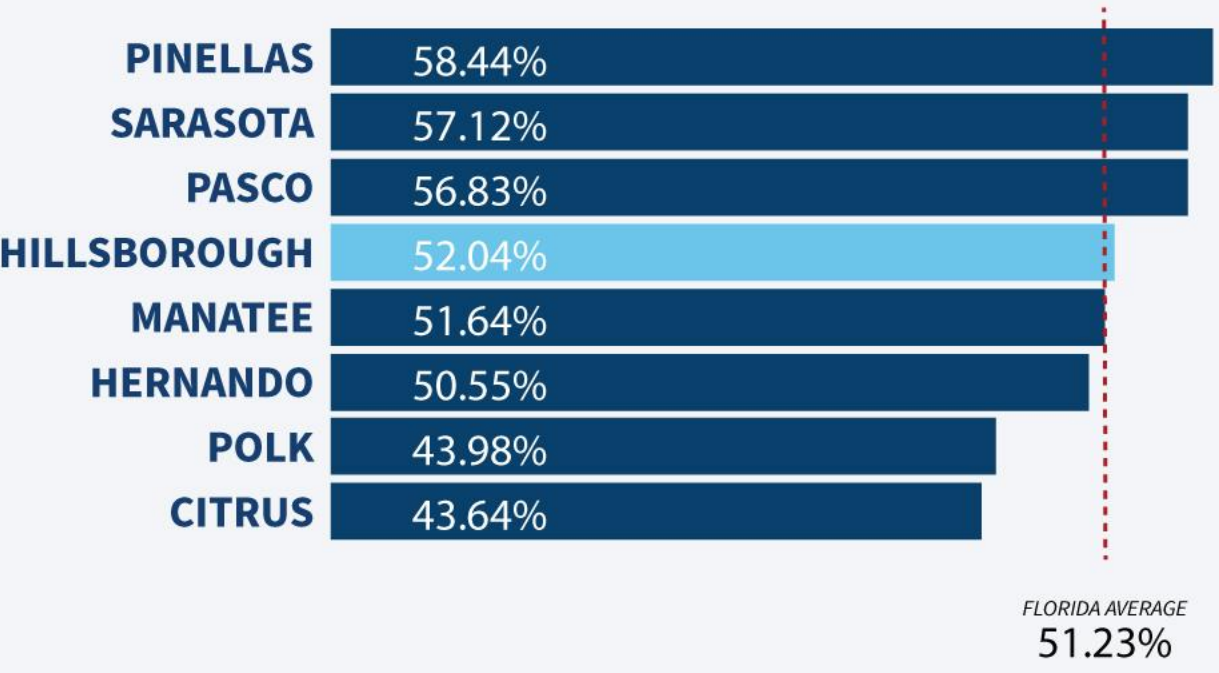
**Kindergarten Readiness:** Number of children "ready" at Kindergarten entry (Scoring 690+ on FAST Star Early Literacy Assessment) as a percentage of number of "test takers" (children who took the Kindergarten Readiness Assessment)

**Source:**

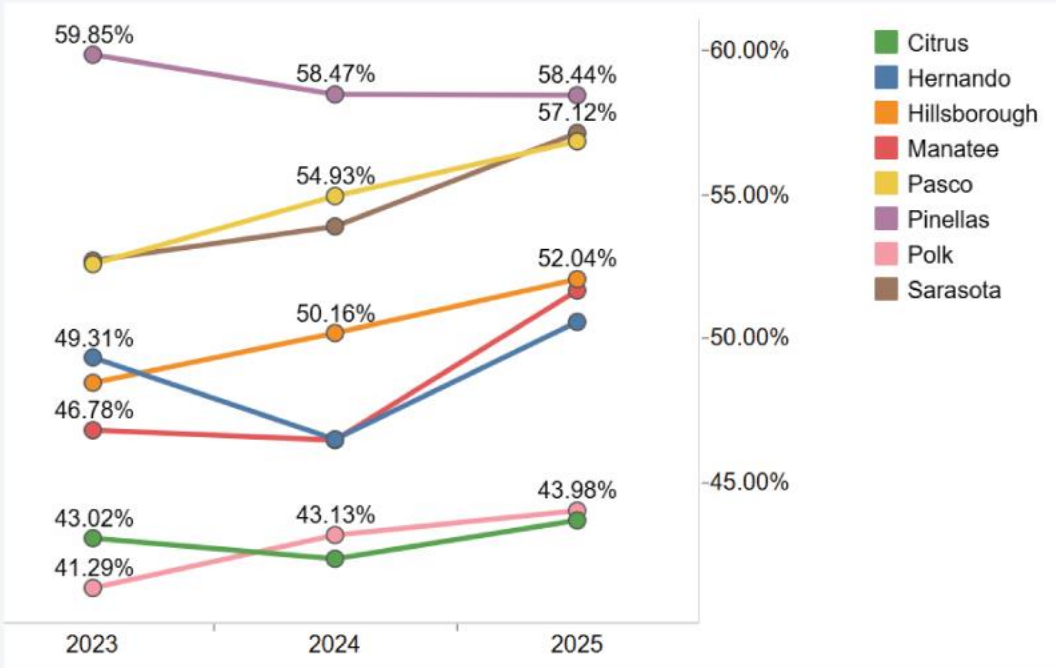
<https://www.flhealthcharts.gov/ChartsDashboards/rdPage.aspx?rdReport=NonVitalIndRateOnly.Dataviewer&cid=0557>

# KINDERGARTEN READINESS

BY TAMPA BAY COUNTY



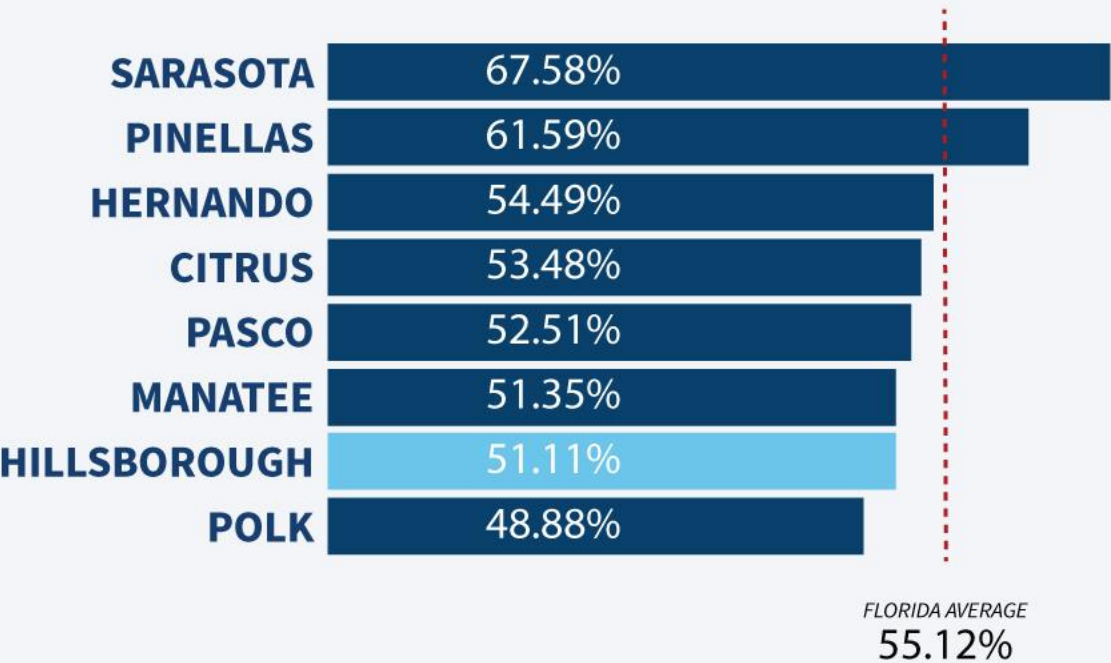
BY TAMPA BAY COUNTY BASED ON REPORT YEARS



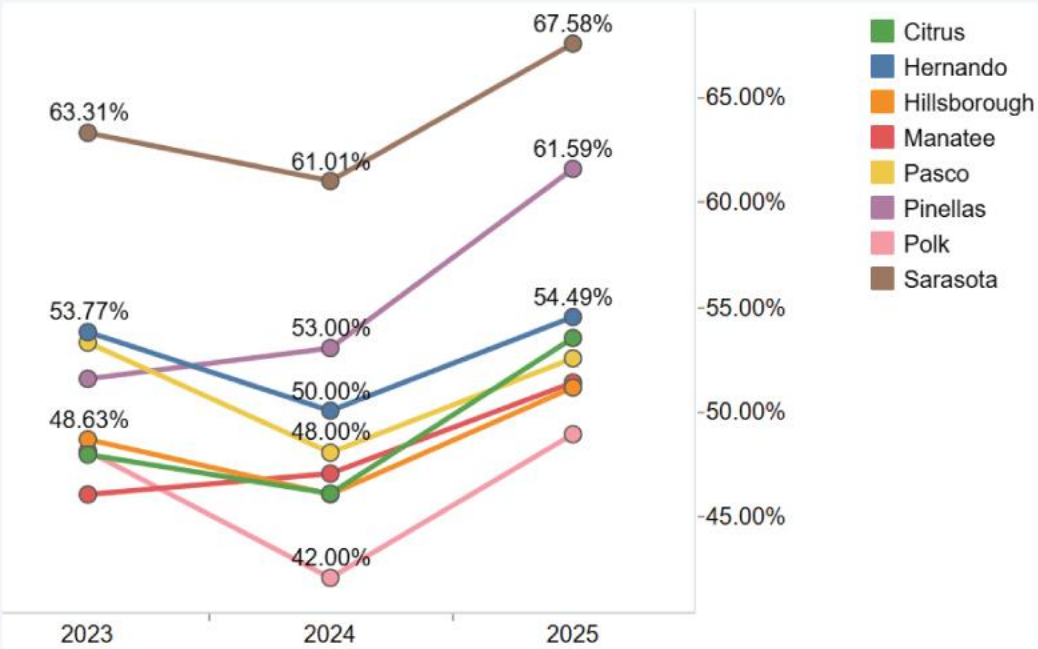
Source: Florida Department of Education, Florida Assessment of Student Thinking (FAST) Star Early Literacy (Fall 2023)

# THIRD GRADE READING

BY TAMPA BAY COUNTY



BY TAMPA BAY COUNTY BASED ON REPORT YEARS



Source: Florida Department of Education, Know Your Data Advanced Reports Portal, (2023-2024 Academic Year)

# School Readiness Wait List – ELCHC

View Waitlist For

- ☐ School Readiness  
☐ Local  
☒ All Combined

4/16/2025 - All Combined Waiting List Details (as of today)

\*Source: Office of Early Learning EFS Modernization.

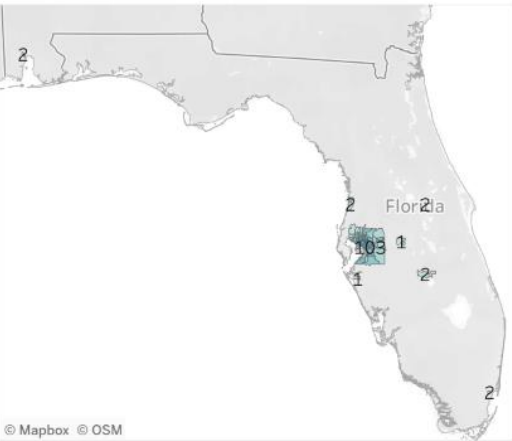
1,855 Total Children

1,216 Total Families

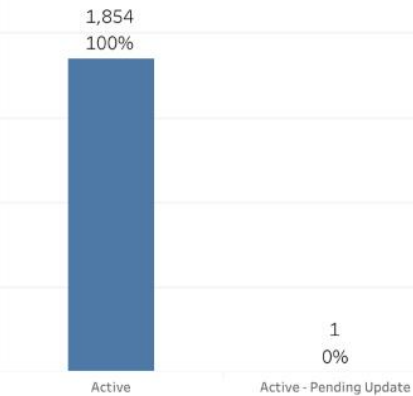
Show Detail Report

Coalition ELC of Hill...

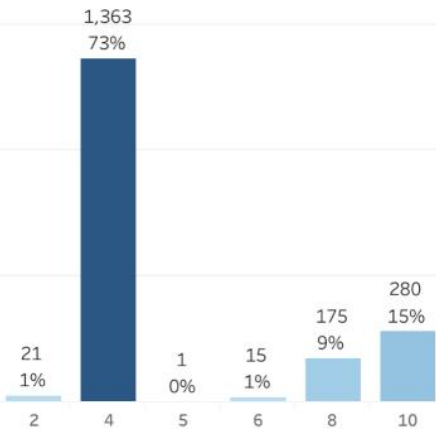
County Hillsborou...



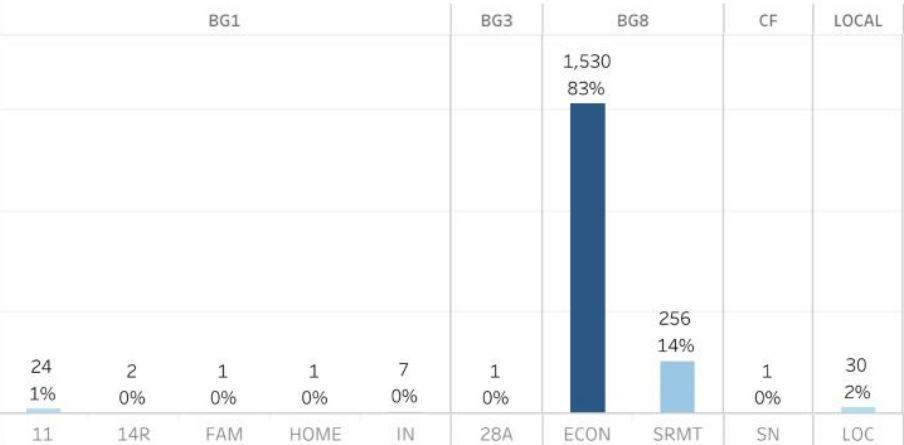
Waitlist Application Status



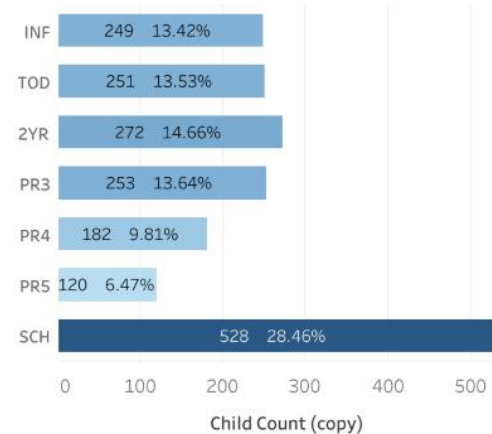
Priority



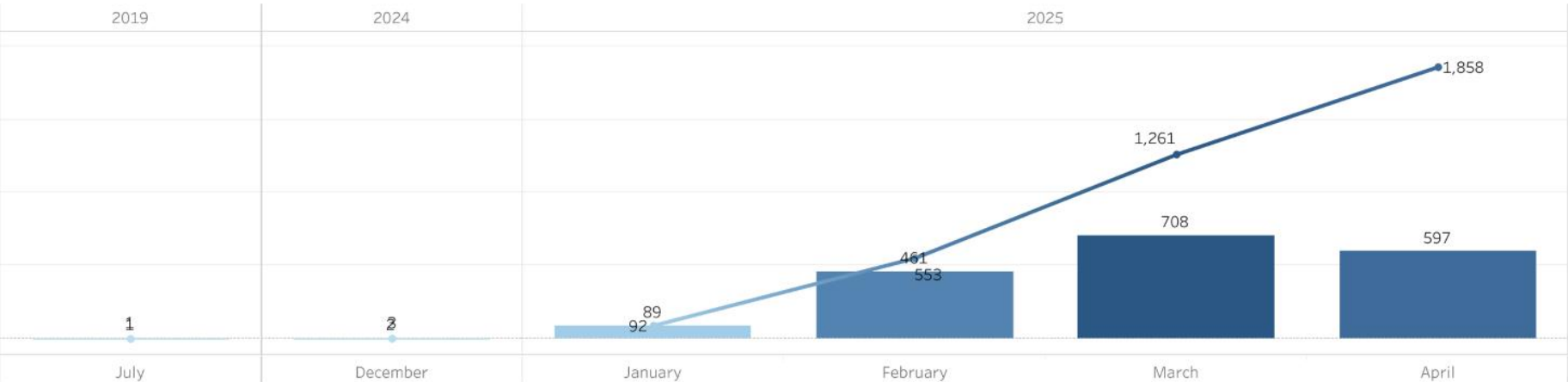
Billing Group



Care Level



Monthly Total



# Student Attendance



Students Absent 21 or More Days and Absent 10% or More in 2023-2024

Name	Total Enrollment	# Students Absent 21 or More Days	% of Students Absent 21 or More Days	# of Students Enrolled 10 or More Days	# of Students Absent 10% or More	% of Students Absent 10% or More
Florida	3,153,549	626,564	19.9%	3,110,902	976,305	31.4%
Hillsborough	259,942	50,698	19.5%	256,220	80,108	31.3%

# 613,072

## households in Tampa Bay face financial hardships

### Financial Instability Rate: ALICE + Poverty

**TAMPA BAY** **45.81%**

United States 42.00%

Seattle ★ 30.81%

### OUR RANKING ▲

**17th** in 2025 vs 19th in 2024

Source: United Way,  
United for ALICE, 2022





# HILLSBOROUGH COUNTY CHILDREN'S EXERCISE, NUTRITION & WEIGHT



**23.6%**

Or 293 survey respondents with children in the home

In the past 12 months, I worried about whether our food would run out before we got money to buy more. Responded "Often true" or "Sometimes true"



**21.7%**

Or 272 survey respondents with children in the home

In the past 12 months, the food that we bought just did not last, and we did not have money to get more. Responded "Often true" or "Sometimes true"



**14.0%**

Or 174 survey respondents with children in the home

In the last 12 months, did you or anyone living in your home ever get emergency food from a church, a food pantry, or a food bank, or eat in a soup kitchen? Responded "Yes"



**59.7%** of middle school students are at a healthy weight



**69.3%** of high school students are at a healthy weight

**82.7%** of teens in Hillsborough County are without sufficient physical activity, 2022

**17.7%** of children in Hillsborough County are food insecure, 2022

**48.2%** of households with children are receiving SNAP, 2018-2022

# HILLSBOROUGH COUNTY CHILDREN'S BEHAVIORAL HEALTH

(Mental Health and Substance Misuse)



54.5%

Of survey respondents ranked **Bullying and Violence in School** as a pressing quality of life issue

59.8%

Of survey respondents ranked **Mental Health** as the most pressing health issue

27.7%

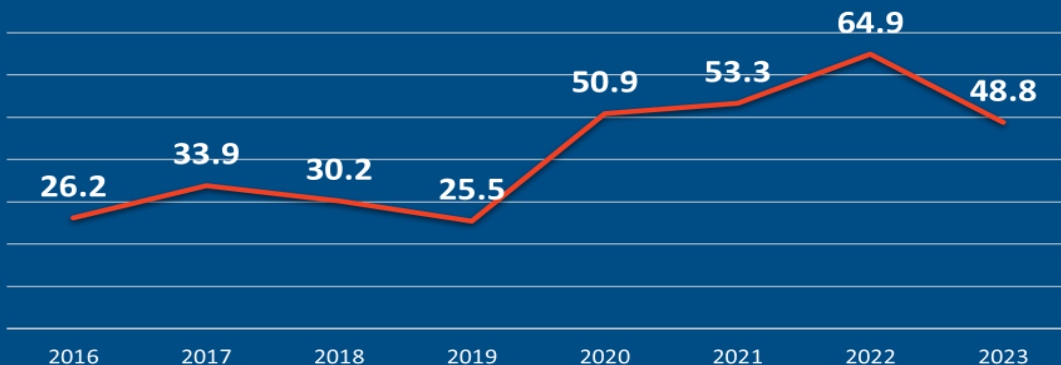
Of high school students felt hopeless or sad for two or more weeks in a row in the last year, 2024



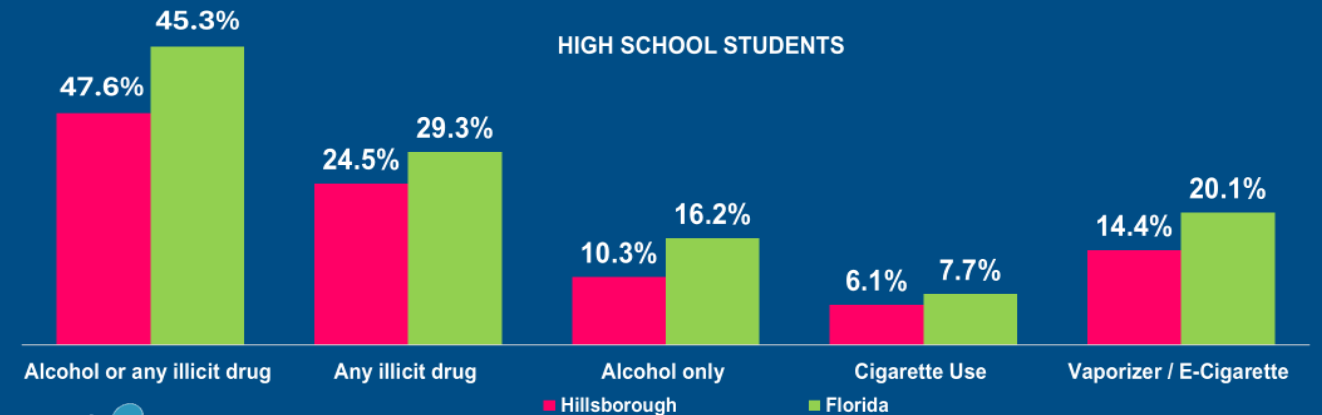
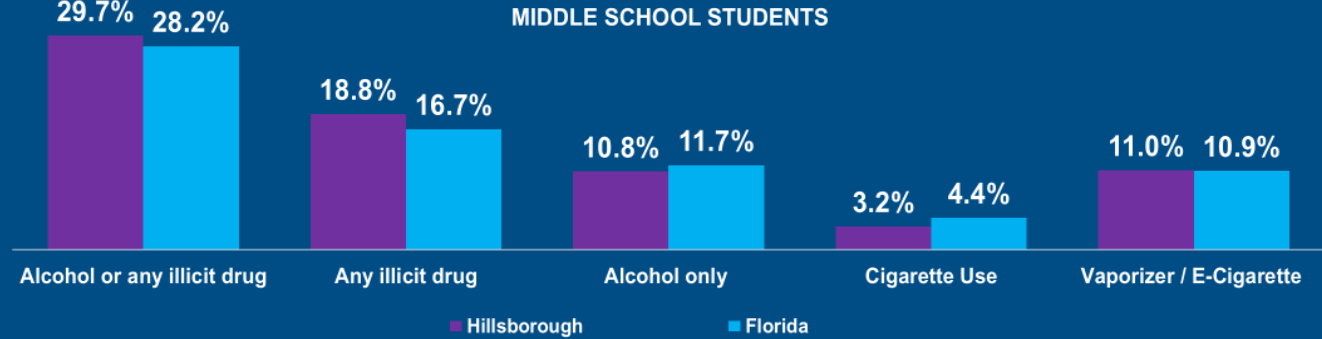
Hospitalizations for mental disorders under age 18, 3 year rolling 20121-23, rate per 100,000 population\*

“Wait times for everything – psych, children’s services. It’s horrendous everywhere. Those poor little kids, I don’t know how they get care when they need care.”  
- Community Stakeholder

HILLSBOROUGH HOSPITALIZATIONS FOR EATING DISORDERS  
RATE PER 100,000 POPULATION\*, AGES 12-18



## Percentages of Youth Who Reported Having Used Various Substances in Their Lifetimes, 2024



3.3%

Middle school students reporting binge drinking, 2024

4.9%

High school students reporting binge drinking, 2024



# HILLSBOROUGH COUNTY CHILDREN'S RESPIRATORY DISEASES



**11.0%**

Of middle school students currently have asthma, 2022

**9.5%**

Of high school students currently have asthma, 2022

**54.1%** of youth were exposed to second-hand cigarette smoke, 2022

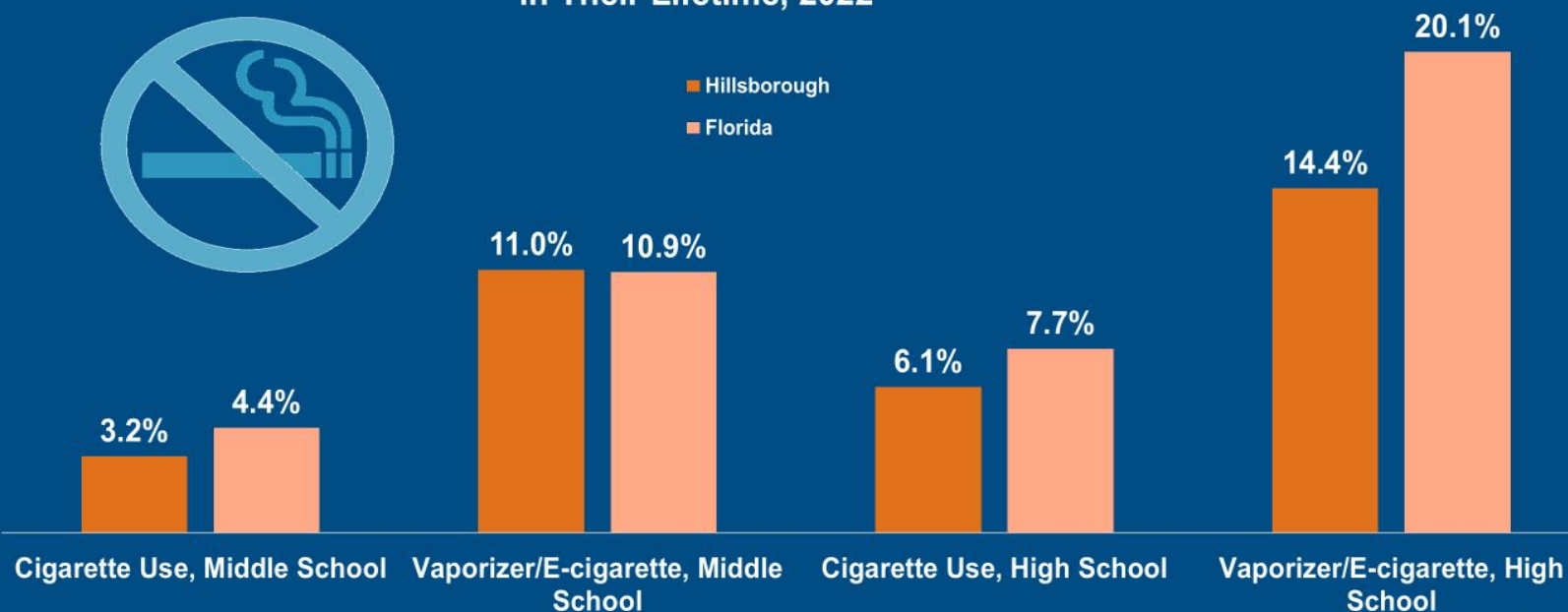


**1,025.3** Emergency Room visits from asthma among children under 5, rate per 100,000\*, 2021-2023

**Asthma hospitalizations, 3 year rolling 2021-2023, rate per 100,000 population\***



**Youth Who Reported Having Used Cigarettes or Vaporizer/E-cigarettes in Their Lifetime, 2022**



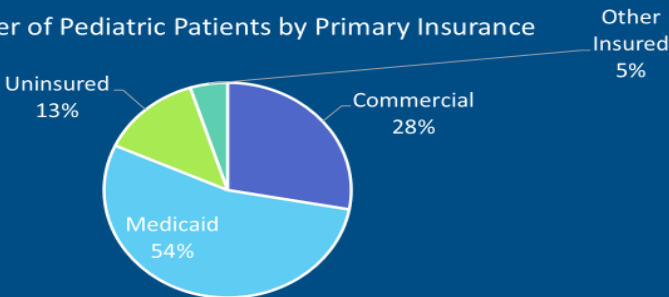
\*Simply described, rate is the number of individuals hospitalized for asthma per 100,000 members of the community

Sources: FLHealthCharts.gov; Florida Youth Substance Abuse Survey

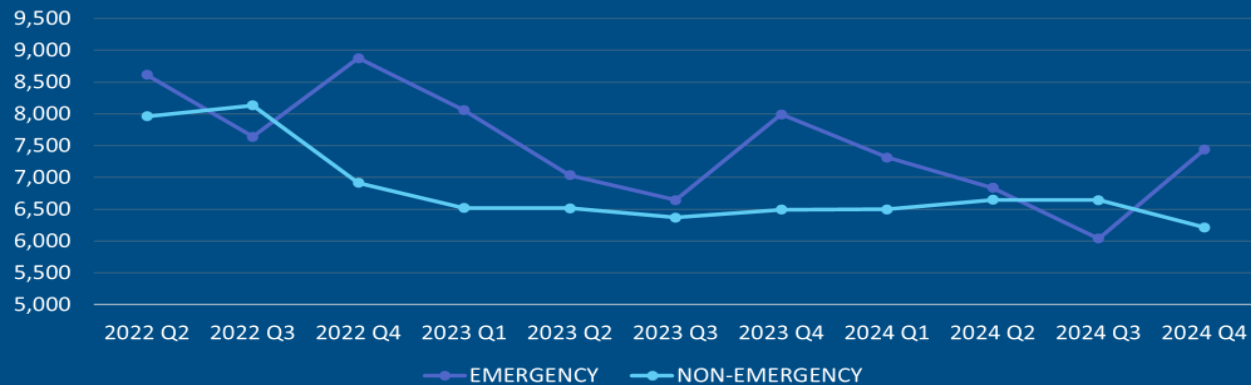


# PEDIATRIC HOSPITAL DATA

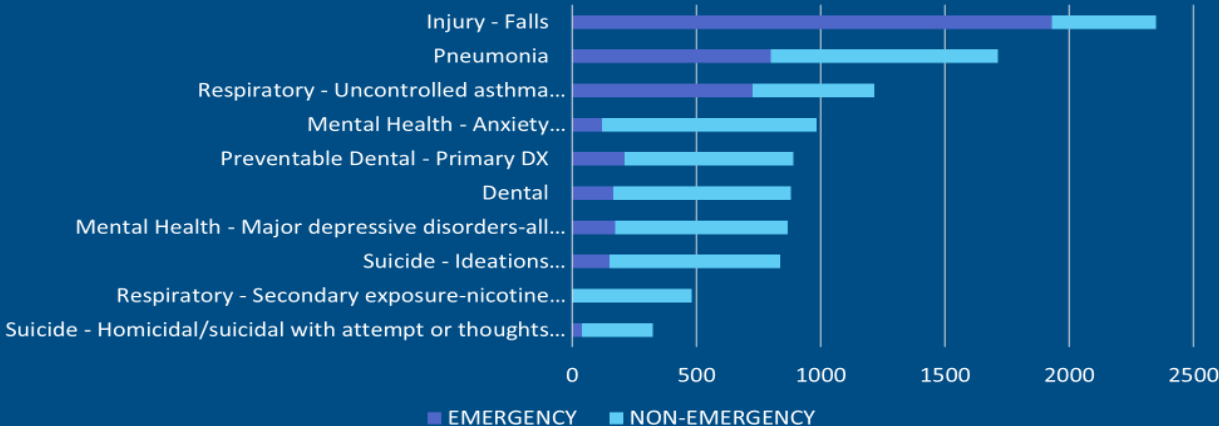
Number of Pediatric Patients by Primary Insurance



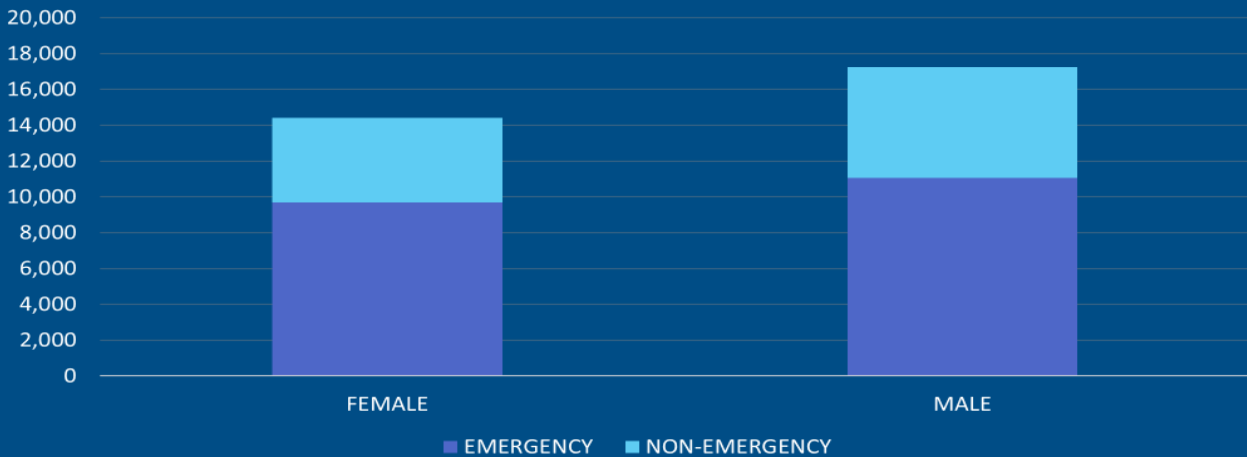
Pediatric Hospitalizations



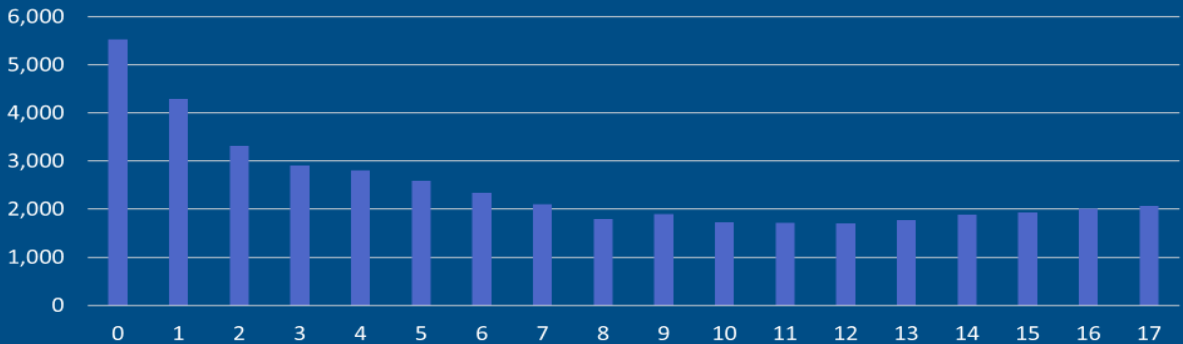
Pediatric Hospitalizations by Encounter and Diagnosis



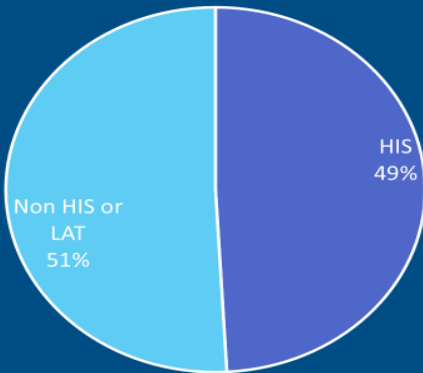
Number of Pediatric Patients by Gender and Encounter Type



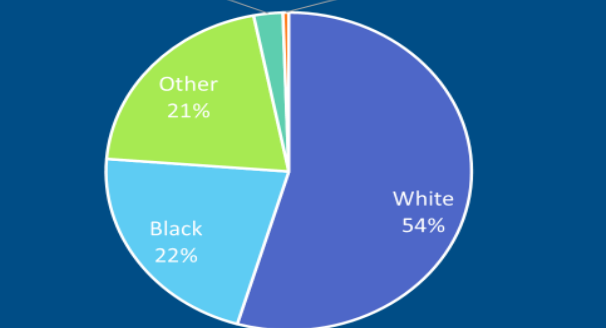
Pediatric Hospitalizations by Age



# of Pediatric Patients by Ethnicity



# of Pediatric Patients by Race



# District Wide Responses

Figure 3: Summary of Winter 2025 Survey Results

	Student, 4-5 n=23,675	Student, 6-8 n=31,764	Student, 9-12 n=40,729	District Staff n=974	Leadership Staff n=261	School Staff n=10,905	Family n=20,577
Anti-Harassment*		61%	59%	86%	88%	89%	67%
Belonging/ Sense of Belonging	57%	38%	35%	71%	70%	67%	
District/School Climate	54%	28%	31%	61%	50%	65%	66%
District/School Leadership				71%	69%	69%	
Emotion Regulation	42%	38%	43%				
Family Engagement							19%
Growth Mindset	44%	38%	35%				
Resources						47%	
School Safety	72%	53%	59%				71%
Social Awareness	52%	41%	44%				
1.4 Teacher Collaboration					79%	76%	
2.1 Instruction					89%	69%	
2.3 Instructional Practices					92%	77%	

Figure 3 displays the percent favorable scores for each survey topic. The most favorable topic for each group is highlighted in green; the least favorable in red.

# HCPS + Children's Board

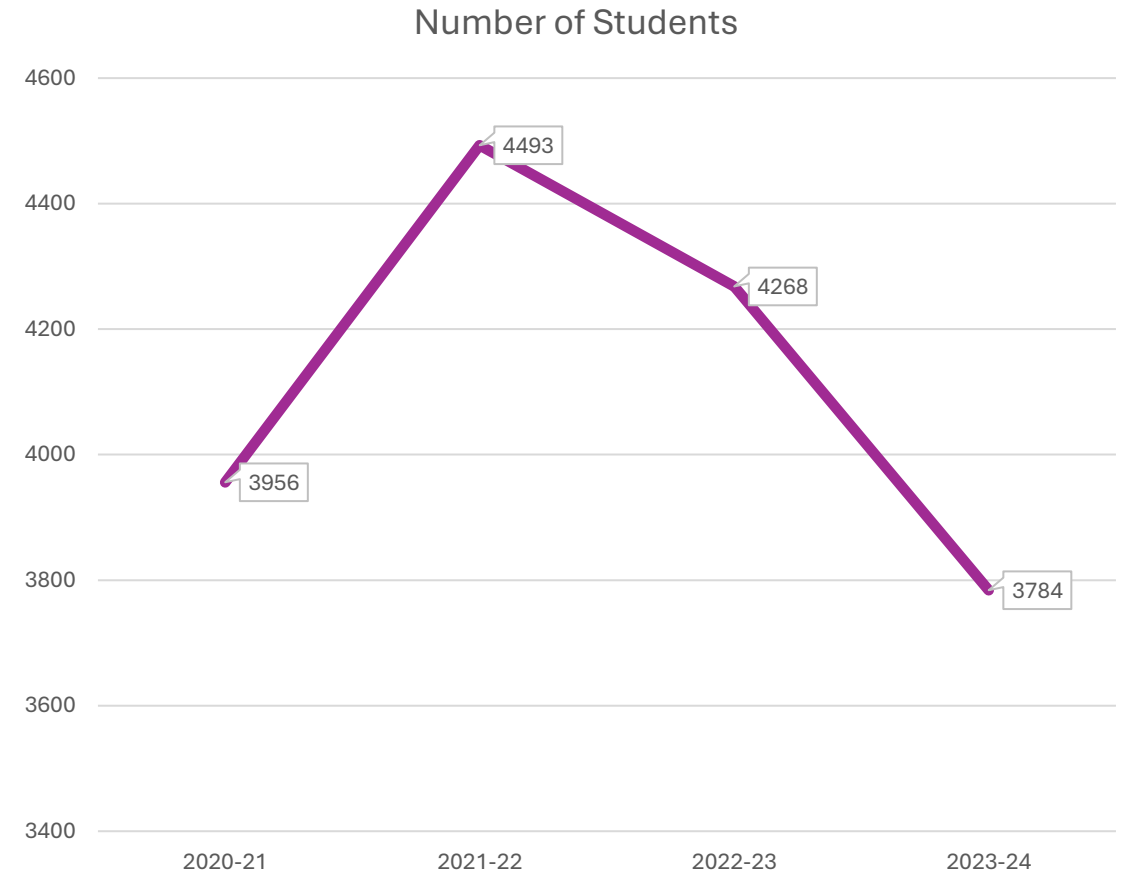


## How can we align our work?

- Support programs that foster peer relationships & belonging
- Partner with schools to boost family engagement (especially middle schools)
- Collaborate on student wellness initiatives
- Help us amplify student voice, especially for underserved groups

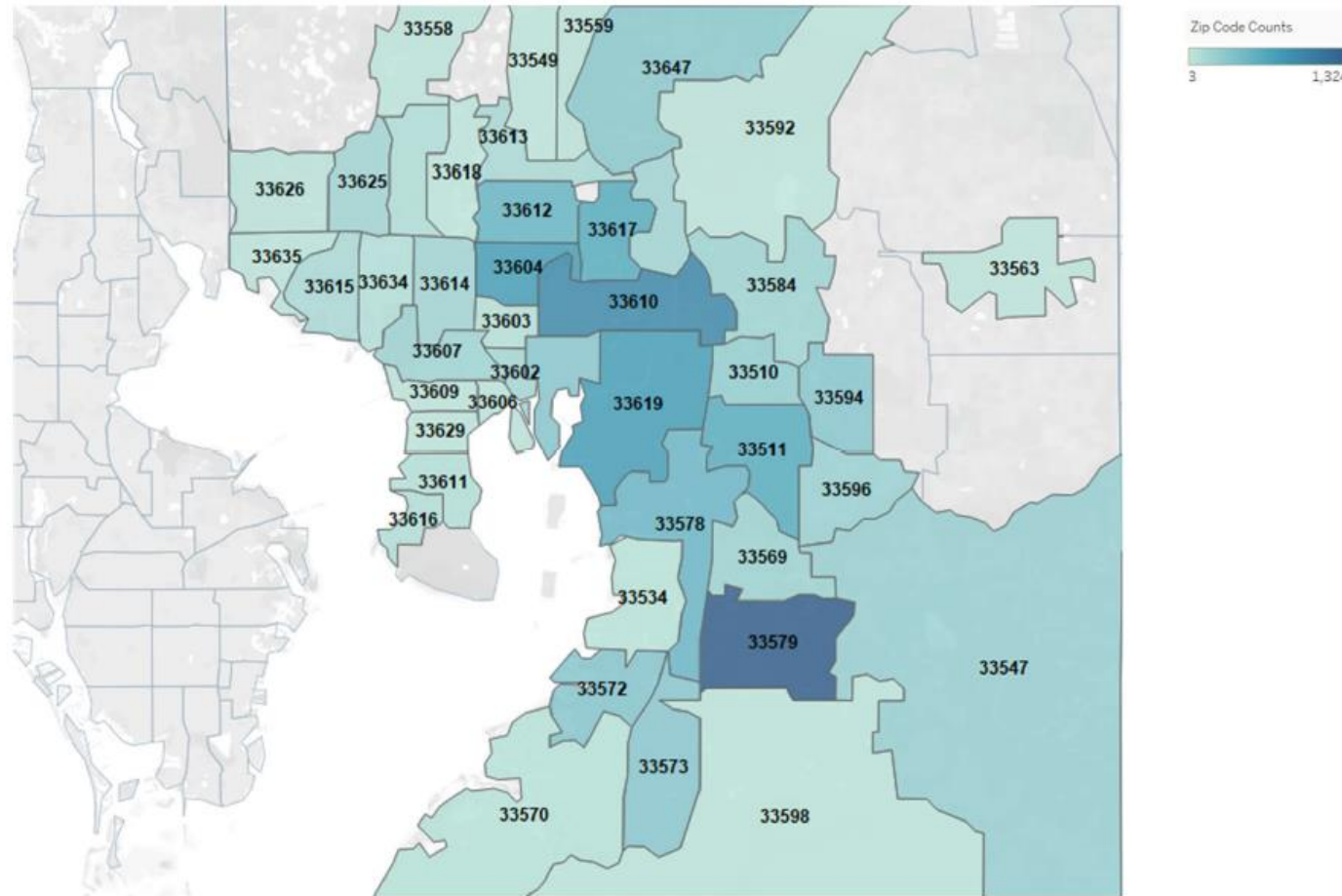
# Student Homelessness

- Data reported by Hillsborough County Public Schools, Homeless Education Liaison
- Based on McKinney-Vento definition of homelessness



# Tampa Housing Authority

## Families Served – December 2024



Map prepared by Children's Board of Hillsborough County. The map is based on 10,186 households in 44 zip codes in Hillsborough County.

Data Source: Tampa Bay Housing Authority

The background of the image is a white surface covered with numerous handprints of various colors, including red, blue, green, orange, purple, and pink. The handprints are of different sizes and orientations, creating a vibrant and diverse pattern. A blue rounded rectangle is centered over the image, containing the text "Community Responses" in white.

# Community Responses

# 2023 Town Hall

## Top Identified Needs

Identified Needs	Continuation Programs	Expanded Programs	New Funding
Parent/Caregiver Parenting Support	34	0	1
Access to Concrete Housing Supports	8	4	0
Family Well-Being (Mental Health)	4	2	1
Educational/After School Resources	15	5	2
Family Language Support	0	1	0
Family Food Support	0	0	1

# 2025 Provider Survey



**103** Total surveys submitted

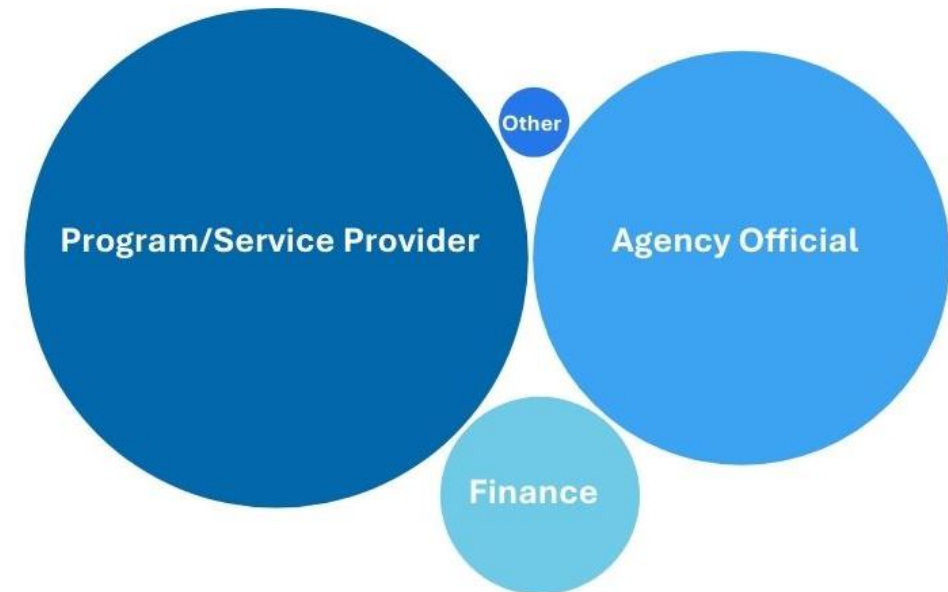


**95** Surveys with complete data

More surveys were completed by Agencies receiving Children's Board funding for **10 or more years**



More surveys were completed by **Program/Service Providers** than any other position type



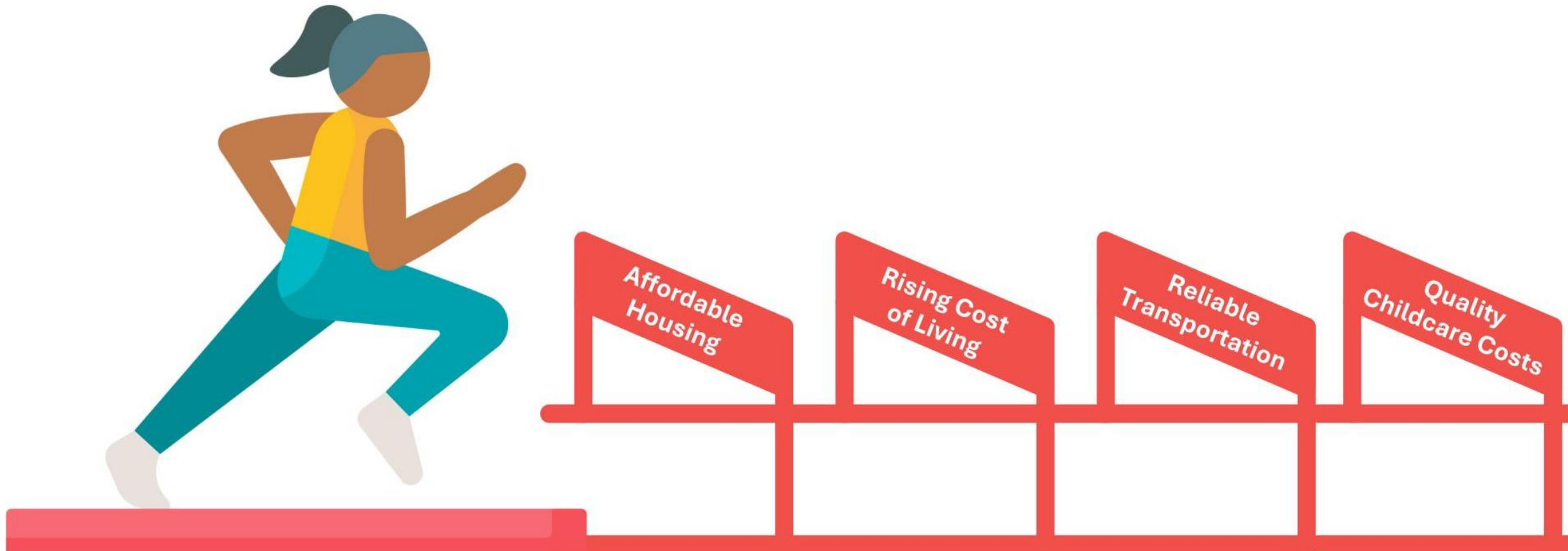
**89%**

Survey respondents reported their organization serves **more than one target population** with 70 surveys indicating **Families** being reported the most.

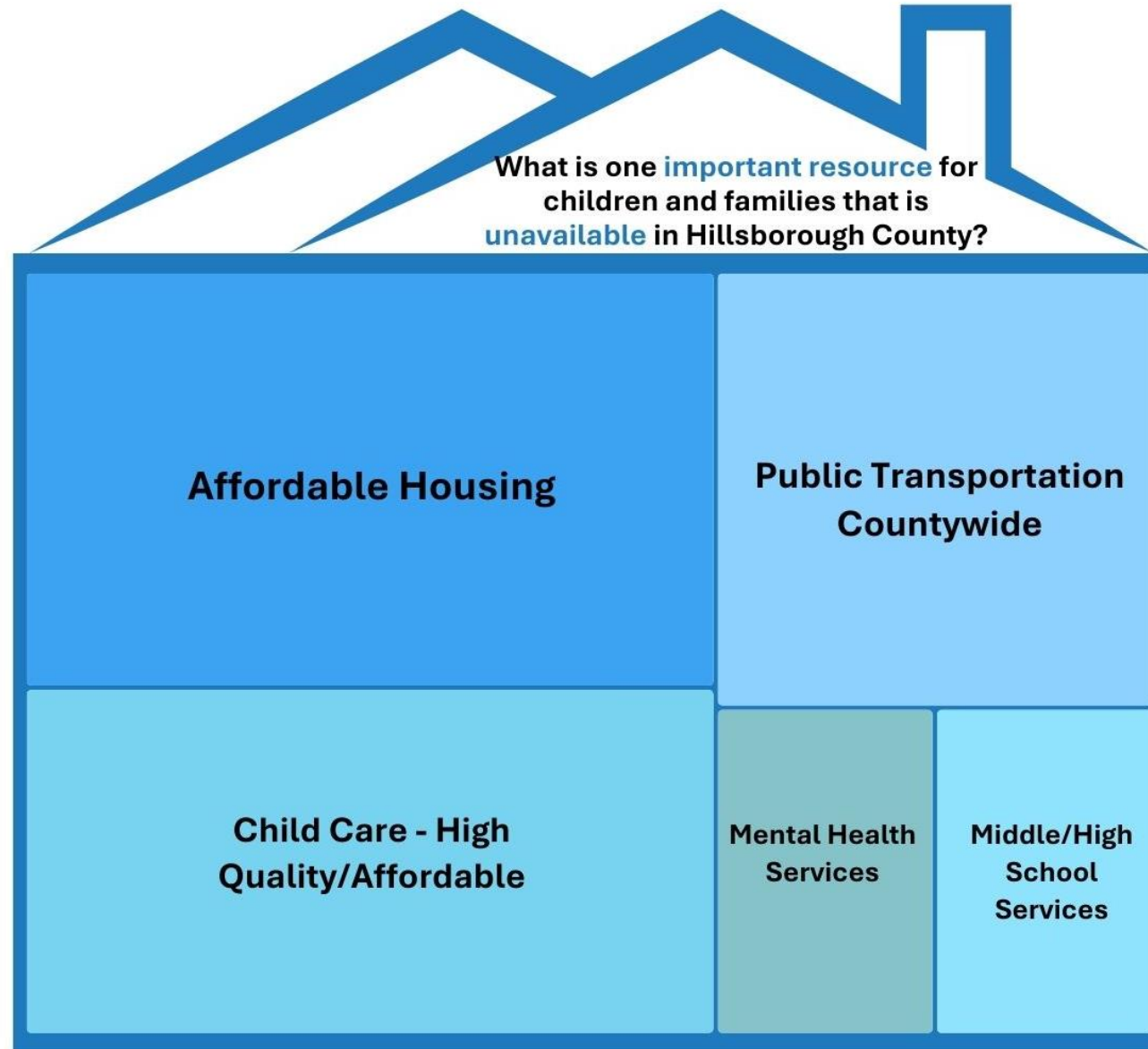
# Survey Results: Barriers/Challenges

What are the most significant **barriers or challenges** families are currently facing?

77% of survey respondents provided one or more challenges



# Survey Results: Unavailable Resources

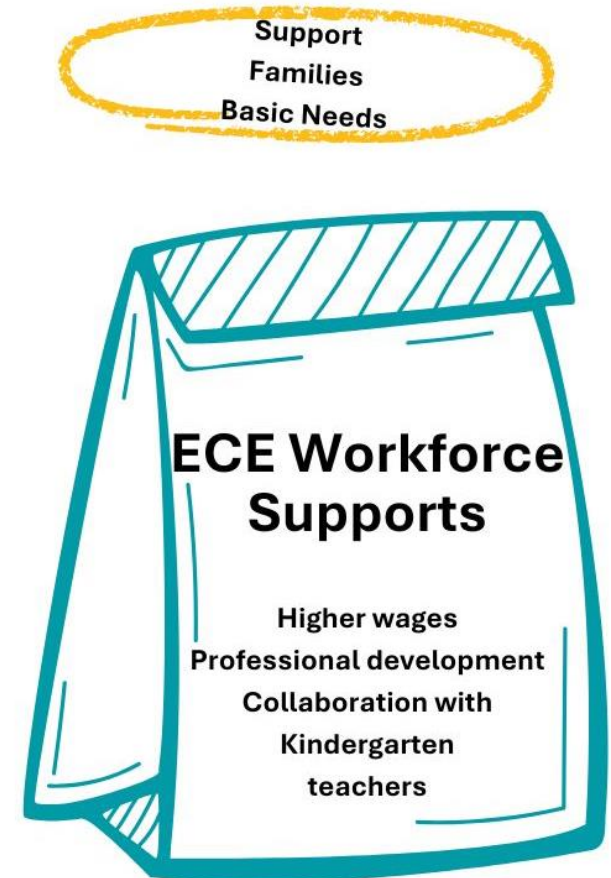
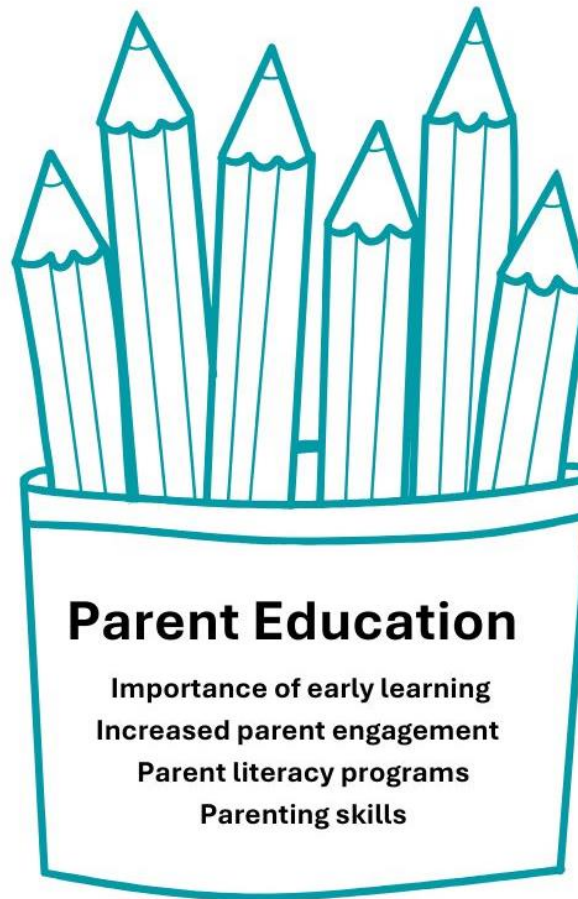


51% of survey respondents provided one or more responses. Size of boxes in Treemap chart correspond to frequency of reported response.

# Survey Results: Kindergarten Readiness

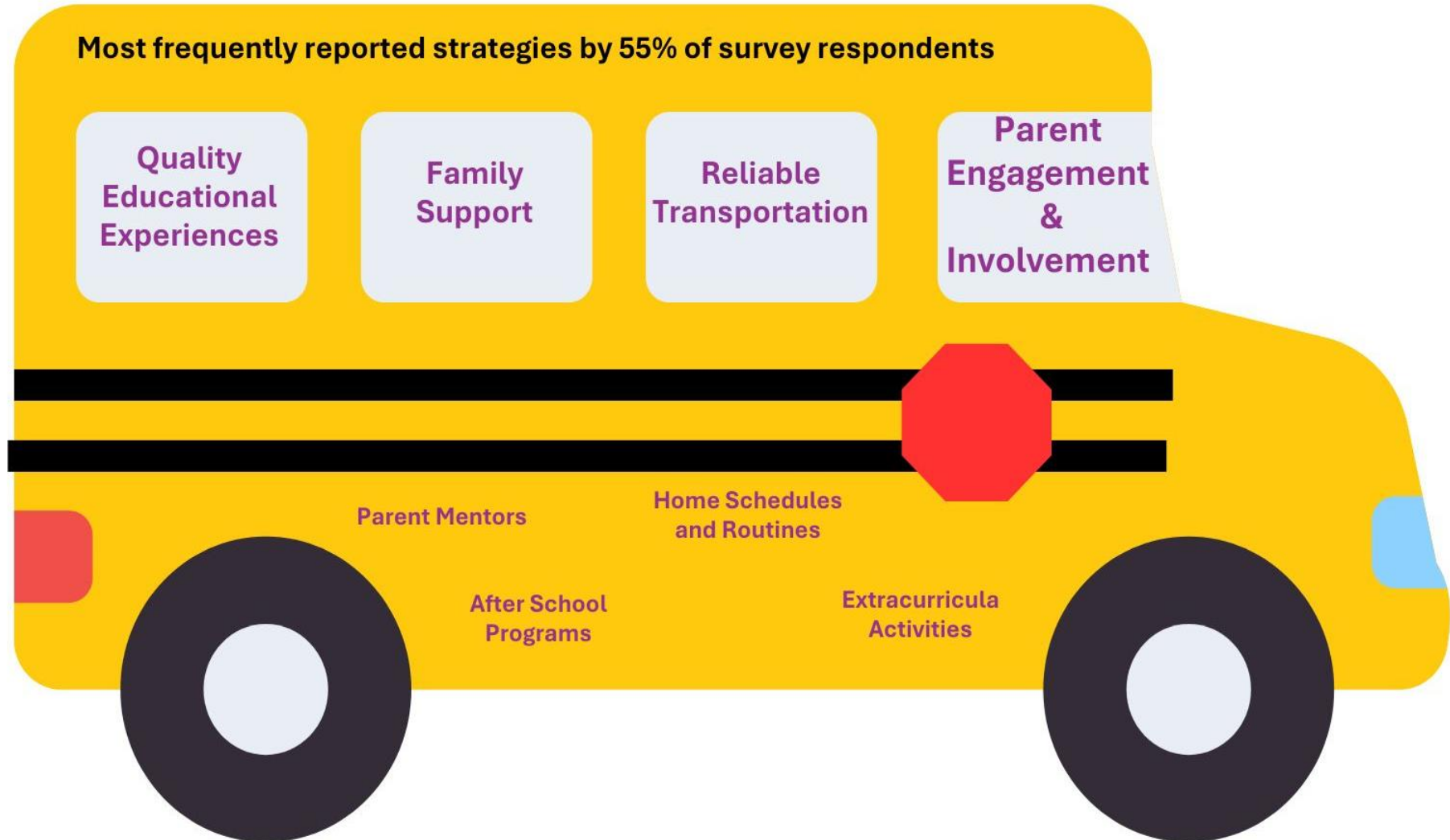
What strategies could be used to **improve the Kindergarten Readiness rate** (reported at 52%) in Hillsborough County?

55% of survey respondents provided one or more strategies



# Survey Results: Chronic Absenteeism

What is needed to **improve attendance at school**? (2023-24 Hillsborough **chronic absenteeism** rate was 31%)



# Survey Results: Future Investments

Is there anything else you think the Children's Board should consider for **future investments**?

33% of survey respondents provided one or more suggestions

Fatherhood  
programs/  
Support for  
new Dads

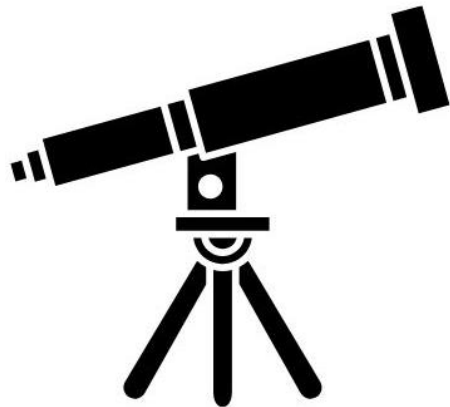
Services for  
Middle/High  
School

Mental Health  
Services  
Parents and  
Children

Early  
Intervention  
and Disability  
Services

Parent  
Support &  
Parenting

Help  
Successful  
Funded  
Programs  
Grow



The background of the image is a white textured surface covered with numerous handprints of various colors including red, blue, green, orange, purple, and pink. The handprints are of different sizes and orientations, creating a vibrant and abstract pattern.

# **2025 Legislative Update**



# Capitol Connection

2025 LEGISLATIVE SESSION: WEEK 6



Welcome to Capitol Connection week 6. April 12<sup>th</sup> marked the **Day 41** rule which states no bill maybe retained for the purpose of reconsideration in committee or subcommittee after the 40<sup>th</sup> day of the regular legislative session.

On Monday, April 7<sup>th</sup> the **House Health & Human Services Committee** met to discuss **HB 47** Child Care and Early Learning Providers by Representative Fiona McFarland, (R-Sarasota) which passed its final committee stop favorably.

On Tuesday, April 8<sup>th</sup> the **House Education & Employment Committee** took up **HB 591** Children with Developmental Disabilities by Representative Randy Maggard, (R-Zephyrhills) passing its fourth and final committee stop. The **House Judiciary Committee** heard **HB 511** Specific Medical Diagnoses in Child Protective Investigations by Representative Robin Bartleman, (D-Weston) marking passage out of its second committee. The **Senate Committee on Rules** took up **SB 508** Family Empowerment Scholarship Program by Senator Shevrin "Shev" Jones, (D- Miami Gardens) passing its third and final committee. The **Senate Committee on Fiscal Policy** heard **SB1618** Education by Senator Alexis Calatayud, (R- Miami) passing its last committee stop before moving to the Senate floor. Finally, the **House Budget Committee** took up **HB 1405** Juvenile Justice by Representative Berny Jacques, (R- Clearwater) passing its third out of fourth committee.

**Sign up to receive updates in your inbox [HERE](#).**

## 2025 Regular Legislative Session

*The difference between the House and Senate proposals is \$4.4 billion, the largest difference between the chambers over the past 10 fiscal years. Consequently, policymakers will have to negotiate significant differences as they continue to agree upon a final budget. The proposals also differ from the governor's [\\$115.6 billion recommended budget](#) for FY 2025-2026, with the Florida House advancing a [\\$113 billion plan](#) and the Senate proceeding with a [\\$117.4 billion proposal](#).*

Areas of negotiation include different approaches to tax cuts:

- The [Florida Senate](#) proposes to permanently eliminate the sales tax on clothing and shoes under \$75 and cuts vehicle tag fees for one year, continues one-time sales tax holidays for hurricane and disaster preparedness, back-to-school items, tool and trade work supplies, and recreational summer items. It also creates a new sales tax holiday for hunting season. The bill lays the foundation for a constitutional amendment to reduce or eliminate property taxes for voter consideration during the 2026 general election by requiring a study by the Florida Office of Economic and Demographic to research the elimination of property taxes.
- The [Florida House](#) has proposed to permanently reduce Florida's sales tax, cutting the rate from 6% to 5.25% and delivering nearly \$5 billion in annual savings.
- [Florida Governor Ron Desantis](#) announced a proposal to deliver immediate property tax relief to Florida homeowners: a rebate averaging \$1,000 for each homesteaded property in the state. The rebates, to be issued in December 2025, would cover state-mandated school property taxes—ensuring full school district funding while easing the burden on Florida families.

## 2025 Regular Legislative Session Con't.

A total of 39 bills filed related to Ad Valorem taxes this legislative session. Including bills limiting calculation of rollback, limiting caps on growth, increasing ad-valorem minimum from \$25,000 to \$75,000/\$100,000, excluding agricultural, actual value due to increased home hardening, and carve outs for special populations.

Bills that are moving with significant impact:

- HB 1339 Assessment of Property Used for Residential Purposes by Overdorf- Prohibits the consideration of value increases due to these specified wind resistance improvements when assessing the value of residential property for taxation purposes.
- SB 318 Ad Valorem Taxation by Truenow/ HB 1215 by Alvarez- Exempts tangible personal property habitually located on agricultural land from ad valorem taxation when used for agricultural or agritourism activities.
- HB 1257 Property Tax Benefits for Certain Residential Properties Subject to a Long-term Lease by Busatta/ SB 1510 Homestead Property Exemptions and Assessment Limitation by Avila – Separates person from property and allows an individual who holds a lease of 6 months or longer to qualify for a homestead exemption up to \$50,000. Total anticipated cost impact if passed by voters will have a recurring impact on local government revenues of -\$1.572 Billion.

## Budget Concerns that could affect Local Programs

Early Learning/ Early Learning Coalitions- Senate has an overall \$60 million reduction to the program while the House has a reduction of \$120 million.

Healthy Start Coalitions- The House has \$3.5 million increase while the Senate remains level funded.



The background of the slide is a white surface covered with numerous handprints of various colors, including red, blue, green, orange, purple, and pink. The handprints are of different sizes and orientations, creating a vibrant and abstract pattern.

# **Strategic Planning Dot Exercise**

## **Directions**

Around the room you will find chart paper outlining key community services/ initiatives that may currently be funded or that you have identified as an area for exploration.

In front of you are 15 dots. These dots may be used to prioritize services or initiatives that you feel are important to you. You may use more than one dot for each priority, or you may use all of your dots on one priority.

Once complete we will tally the dots and continue with a discussion on identified priorities.

The background of the slide is a white textured surface covered with numerous colorful handprints. The handprints are in various colors including red, blue, green, orange, purple, and pink. Some are large and clear, while others are smaller and more faded. They are scattered across the entire page, creating a vibrant and child-like aesthetic.

# Next Steps

- Determine areas for staff research and reporting.
- Develop a written summary of priorities.
- Continue to focus on service priorities/initiatives throughout the year.





**Thank you!**